

Status of The Labor Force in Kurdistan Region

The Results of Labor Force Survey

Second half of 2015



**Kurdistan Region Government
Ministry of Planning
Kurdistan Region Statistics Office**



Department of Population and Labor Force Statistics

June 2016

**Kurdistan Regional Government
Ministry of Planning
Kurdistan Region Statistics Office**

Status of labor force survey in Kurdistan region

The Results of the Labor force survey Second half of 2015

Population and labor force department

June 2016

©June, 2016

All right reserved

Kurdistan Region Statistics Office/ Ministry of planning

Suggested Citation:

Kurdistan Region Statistics Office, 2016, population and labor force department," *The Results of the Labor force survey in Kurdistan Region*

Second half of 2015"

For more information please contact:

Email: contact@krso.gov.krd

Website: www.krso.gov.krd

Tel: +964(0)662559170

ID number 43

Acknowledgment

Kurdistan Region Statistics office (KRSO) express its countless gratitude to all households who participated in the labor force survey 2015, the second half, with providing information and contributing to the success of the survey.

It also offers deep thanks to the staff of KRSO, the staff of statistics directorates in Kurdistan region governorates, and all people outside of KRSO who had a share in conducting the survey and reporting the results. KRSO also appreciates the effort of the United Nations Population Fund (UNFPA) in providing the financial support for this survey. We sincerely appreciate the effective role UNFPA played in providing the budget for carrying out this survey. It was very effective in preventing a cut in labour force survey which has been annually carried out since 2012. Although not implementing two rounds of labour force survey inflicted some insufficiency in 2015 survey, however, carrying out one round of the survey is still considered as an achievement.

Work team

Special thanks to the following teams that undertook much responsibility to implement the survey.

- Survey supervisor from statistics directorates
Saman Ezaddin.R, the manager of Erbil statistics directorate,
Mahmod Osman, the manager of Sulaimani statistics directorate,
Chiavan Abdulrazaq. S, the manager of Duhok statistics directorate,
Haidar Shamsaddin. J, the manager of Garmiyān administration statistics,
Haidar Mahmod.Kh, the manager of Soran statistics directorate.
Araz Ibrahim.H, acting manager of Raparin administration
- Technical team
Gohdar Mohammad.Ali.S, the survey supervisor in KRSO,
Sabir Yasin. S, the survey supervisor in Duhok governorate- Duhok statistics directorate,
Soran Gafor.S, the survey supervisor in Sulaimani governorate- Sulaymani astatistics directorate,
Delzar Aref.J, the survey supervisor in Erbil governorate- Erbil statistics directorate.
- developing data entry database and data cleaning team in KRSO
Raqhib Bahaddin. M
Nihayat Hashem.A
- Data analyzing, preparing and report designing
Gohdar Mohammad Ali.S
Naima Akram.J
- Checking the basic standards for statistical reports
Suad Baker.F

Preface

Labor force report for 2015 that is available to readers is the fourth report on labor force survey in Kurdistan Region. The current report is presented very different from the previous reports in terms of the number of rounds. Unlike previous surveys that were conducted in two rounds, only one round of labor force survey 2015 was conducted due to economic crises that faced Kurdistan Region over the past two years.

No doubt, the figures in this report are so much bigger and higher than what reported in the previous reports in the last years. Unemployment rate (13.53%) in 2015 is twice (7.13%) the second half of the last year.

However, not having access to the data of the first half of 2015 and consequently no annual report on complete data in this year caused a big gap, but still, the data from the second half of 2015 is a big achievement. In order to make comparison between data and evaluate the changes, we can rely on the data from the second half of the last years to assess the labor force situation over the last four years,

This report could help to identify the sectors that have been most affected by economic crisis in order to take measures to treat the crises that faced Kurdistan Region.

Dr. Ali S.

Minister of planning

Contents

Acknowledgment.....	i
Work team.....	ii
Preface.....	iii
List of tables.....	iii
List of figures.....	vi
Summery.....	vii
Introduction.....	1
Objectives.....	2
Advantages.....	3
Chapter one (Main results).....	5
1.1 labor force.....	5
1.2. Labor force status (labor force distribution).....	7
1.3. Labor force by Education Level.....	8
1.4. Class of workers.....	9
1.5. Economic activity (occupation).....	9
1.6. Job sector.....	10
1.7. Main occupation.....	12
1.8 Nature of employment.....	12
1.9. Monthly income.....	12
1.10. Weekly working hours and income.....	14
Chapter two (Methodology and quality).....	15
2.1. Questionnaire.....	15
2.1.1. Household identification.....	15
2.1.2. Household's record section.....	15
2.1.3. Employment status section.....	15
2.2. Frame and sample.....	15
2.2.1. Targets.....	15
2.2.2. The frame of the sample.....	15
2.2.3. Sample size.....	16
2.2.4. Sampling.....	16
2.2.5. Sample rotation.....	16
2.3. Weighting.....	16
2.4. Field work.....	16
2.4.1. Selecting and training the researchers.....	17
2.4.2. Encoding.....	17

2.5. Data entry and data treatment	17
2.5.1. Data entry.....	17
2.5.2. Data treatment.....	17
2.6. Data quality.....	18
2.7. Data accuracy	18
2.7.1. Statistical error.....	18
2.7.2. Non-statistical error	18
2.7.3. Response rate	19
2.8. Comparability	19
2.9. Quality control.....	19
Chapter three (terms and concepts).....	20
Appendix 1 (Tables)	24
Appendix 2 (Questionnaire)	99

List of tables

1) Distribution of Population Aged 15 Years and Above by in Kurdistan Region by Sex, Age Group, Labor Force Status, Economically Being Active and Inactive, Number and Percentage - Second Half 2015	25
2) Distribution of Population Aged 15 Years and Above in Erbil Governorate by Sex, Age Group, Labor Force Status, Economically Being Active and Inactive, Number and Percentage - Second Half 2015	26
3) Distribution of Population Aged 15 Years and Above by Sex, Age Group, Labor Force Status, Economically Being Active and Inactive, Number and Percentage in Sulaimani Governorate - Second Half 2015	27
4) Distribution of Population Aged 15 Years and Above in Duhok Governorate by Sex, Age Group, Labor Force Status, Economically Being Active and Inactive, Number and Percentage - Second Half 2015	28
5) Distribution of Population Aged 15 Years and Above in Kurdistan region by Education Level Sex, labor force Status, Economically Being Active and Inactive, Number and Percentage - Second Half 2015	29
6) Distribution of Population Aged 15 Years and Above in Erbil Governorate by Education Level Sex, Labor Force Status, Economically Being Active and Inactive, Number and Percentage - Second Half 2015	30
7) Distribution of Population Aged 15 Years and Above in Sulaimani Governorate by Education Level Sex, Labor Force Status, Economically Being Active and Inactive, Number and Percentage - Second Half 2015	31
8) Distribution of Population Aged 15 Years and Above in Duhok Governorate by Education Level Sex, Labor Force Status, Economically Being Active and Inactive, Number and Percentage - Second Half 2015	32
9) Distribution of Population Aged 15 Years and Above in Kurdistan Region by Governorate, Sex, Economically Being Active and Inactive, Number and Percentage - Second Half 2015 ..	33
10) Distribution of Population Aged 15 Years and Above in Erbil Governorate by District, Sex, Economically Being Active and Inactive, Number and Percentage - Second Half 2015	34
11) Distribution of Population Aged 15 Years and Above in Sulaimani Governorate by, District, Sex, Economically Being Active and Inactive, Number and Percentage - Second Half 2015	35
12) Distribution of Population Aged 15 Years and Above in Duhok Governorate by District, Sex, Economically Being Active and Inactive, Number and Percentage - Second Half 2015 ..	36
13) Distribution of Population Aged 15 Years and Above in Kurdistan Region by Governorate, Sex, labor force Status, Number and Percentage - Second Half 2015	37
14) Distribution of Population Aged 15 Years and Above in Erbil Governorate by District, Sex, Labor Force Status, Number and Percentage - Second Half 2015	38
15) Distribution of Population Aged 15 Years and Above in Sulaimani Governorate by District, Sex, Labor Force Status, Number and Percentage - Second Half 2015	39
16) Distribution of Population Aged 15 Years and Above in Duhok Governorate by District, Sex, labor force Status, Number and Percentage - Second Half 2015	41
17) Distribution of Economically Active Population Aged 15 Years and Above in Kurdistan Region by Sex, Marital Status, Age Groups, Number and Percentage - Second Half 2015	42
18) Distribution of Economically Active Population Aged 15 Years and Above in Erbil Governorate by Sex, Marital Status, Age Groups, Number and Percentage - Second Half 2015	43

19) Distribution of Economically Active Population Aged 15 Years and Above in Sulaimani Governorate by Sex, Marital Status, Age Groups, Number and Percentage - Second Half 2015	44
20) Distribution of Economically Active Population Aged 15 Years and Above in Duhok Governorate by Sex, Marital Status, Age Groups, Number and Percentage - Second Half 2015	45
21) Distribution of Economically Active Population Aged 15 Years and Above in Kurdistan Region by Sex, Education Level, Age Groups, Number and Percentage - Second Half 2015 ..	46
22) Distribution of Economically Active Population Aged 15 Years and Above in Erbil Governorate by Sex, Education Level, Age Groups, Number and Percentage - Second Half 2015.....	47
23) Distribution of Economically Active Population Aged 15 Years and Above in Sulaimani Governorate by Sex, Education Level, Age Groups, Number and Percentage - Second Half 2015.....	48
24) Distribution of Economically Active Population Aged 15 Years and Above in Duhok Governorate by Sex, Education Level, Age Groups, Number and Percentage - Second Half 2015.....	49
25) Distribution of Population Aged 15 Years and Above in Kurdistan Region by Sex, class of workers, Number and Percentage - Second Half 2015	50
26) Distribution of worker Population Aged 15 Years and Above in Erbil Governorate by District, Sex, class of workers, Number and Percentage - Second Half 2015	51
27) Distribution of worker Population Aged 15 Years and Above in Sulaimani Governorate by District, Sex, class of workers, Number and Percentage - Second Half 2015	54
28) Distribution of worker Population Aged 15 Years and Above in Duhok Governorate by District, Sex, class of workers, Number and Percentage - Second Half 2015	60
29) Distribution of worker Population Aged 15 Years and Above in Kurdistan Region by Governorate, Sex, Reason of Absent at Work During the Reference Time, Number and Percentage - Second Half 2015	63
30) Distribution of Unemployed Aged 15 Years and Above in Kurdistan Region by Governorate, Sex, Education level, Number and Percentage - Second Half 2015	65
31) Distribution of Unemployed Population Aged 15 Years and Above in Kurdistan Region by Governorate, Age Group and Sex, Number and Percentage - Second Half 2015	66
32) Distribution of Unemployed Population Aged 15 Years and Above in Kurdistan Region by Governorate, Sex and the Ways Looking for Job, Number and Percentage - Second Half 2015	68
33) Distribution of Employees Age 15 Years and Above in Kurdistan Region by Governorate, Sex, Work place, Number and Percentage - Second Half 2015.....	72
34) Distribution of Employees age 15 Years and Above in Kurdistan Region by Governorate, Sex, Main Activity and activity area, Number and Percentage - Second Half 2015.....	74
35) Distribution of Employees Age 15 Years and Above in Kurdistan Region by Governorate, Sex and Job Sector, Number and Percentage - Second Half 2015.....	78
36) Distribution of Employees Age 15 Years and Above in Kurdistan Region by Governorate, Main Occupation, Sex, Number and Percentage - Second Half 2015	80
37) Distribution of Employees Age 15 Years and Above in Kurdistan Region by Governorate, Nature of Employment, Sex, Number and Percentage - Second Half 2015	82
38) Distribution of Employees Aged 15 Years and Above in Kurdistan Region by Governorate, Monthly Income Groups, Job Sector, Number and Percentage- Second Half 2015	84

39) Distribution of Employees Aged 15 Years and Above in Kurdistan Region by Governorate, monthly Income Groups, Education Level, Number and Percentage - Second Half 2015.....	88
40) Distribution of Employees Aged 15 Years and Above in Kurdistan Region by Governorate, Weekly Working Hours, Education Level, Number and Percentage - Second Half 2015	92
41) Distribution of Employees in Kurdistan Region by Governorate, Monthly Income Groups, Weekly Working Hours, Number and Percentage- Second Half 2015	94
42) Distribution of Employees Aged 15 Years and Above in Kurdistan Region by Governorate, the Main Reason for Willing Extra Work, Number and Percentage- Second Half 2015.....	98

List of figures

1) percentage rate of Labor force participation aged 15 and above by sex- second half of 2015.....	5
2) percentage rate of Labor force participation by sex and age group-second half of 2015 ...	6
3) percentage rate of Labor force participation by sex and governorate- second half of 2015	6
4) percentage rate of labor force participation by status and Governorates-second half of 2015.....	8
5) percentage distribution of Unemployed in Kurdistan Region by Education level- the second half of 2014 and 2015	9
6) Employees percentage Rate in Governmental Sector by Sex- the second half of 2015	10
7) Employees Percentage Rate by Sex and Job sector- the second half of 2015	11
8) Percentage Distribution of workers aged 15 and over by job sector- second half of 2015	11
9) Percentage Distribution of employed by monthly income group-second half of 2015.....	13
10) Percentage Distribution of employed in Governmental sector by monthly income group-second half of 2015.....	13
11) Percentage Distribution of workers by weekly working hours- second half of 2015	14

Summery

Labor force participation rate was 38.98% in Kurdistan Region for the second half of 2015 with a little decrease compared to 39.18% that has been recorded for the second half of 2014. Looking on age groups, the differences would be more obvious. Except the age group 15-24 that recorded a decrease of 1.6%, all other age groups show an increase in labor force participation, where the age group 55-64 recorded the highest rate of 2% compared to other age groups.

Unemployment rate was 13.53% in the second half of 2015 and compared to 7.13% in the second half 2014, it shows an increase about 90%.

Looking on labor force distribution by education attainment, it can be observed that 24% of people with high school certificate were unemployed in the second half of 2015, while this group recorded 14% in the second half of 2014. In other words, it shows an increase of more than 70%. Labor force distribution by class of workers shows, job owners comprise 5.7% of labore force in the second half of 2015 compared to 5.5% recorded in the second half of 2014. A trend toward being job owner can be observed in 2015 compared to 2014. The difference is not significant however. □

It is noticeable that, the employment in public sector shows an increase in the second half of 2015 compared to its same period in 2014. This is an indication of return to public sector by people who have lost jobs in private sector due to lack of job opportunities in this sector.

Distribution of employment by income group as shown in Table 38, the income group of 500,000 and less than 750,000 ID comprise the highest rate in private sector (32.3%) as well as in public sector (34.3%). And by hours worked, Table 41, people who work between 35 and less than 45 hours per week recorded the highest rate (29.4%) of labor force, stated the labor force survey 2015.

Introduction

Except the first round of the labor force survey in 2012, this survey is the first one that KRSO relied on its staff from KRSO and statistics directorates in governorates and administrations across Kurdistan region in conducting the whole process, from the beginning till reporting the results. In the first round of the survey, RAND Organization supported the survey staff by training them on how to do such statistical works and how they could carry out the coming surveys by relying on their own ability and the knowledge that they received during the training.

The current report is the fourth report on labor force that has been conducted in Kurdistan region during four consecutive years since 2012. The point that makes this survey different from others is the number of the rounds of the survey. From 2012 till 2014, this survey was conducted twice every year, the first round in May or June and the second round in November or December of every year. Due to economic crises that faced Kurdistan region during the last years and losing financial sources, only one round of *the labor force survey 2015* was done in December 2015. No doubt, missing one round of the survey and consequently not having access to some data will face the comparison work with difficulty. Lack of data also make it difficult to investigate the changes occur in job markets and consequently decision making over this issue in Kurdistan region specially at time of conducting the survey that is the end of seasonal works and losing more job opportunities.

For the reasons that mentioned above, making comparison between the results of this survey and the previous surveys in the last years needs more attention. The figures of indicators in this report are significantly bigger than those of the last reports. It has been tried to compare some of these indicators with the same indicators that have been surveyed at the same time of the last year (2014). The different rates that resulted from comparison could be taken into consideration in understanding other indicators in tables.

Economic activity, unemployment, employment, distribution of employed by income, by education level, by working hours, by sector, by type of economic activity, as well as distribution of unemployment by education, age, sex, etc... are indicators that have been tried to be introduced in this report. As only one round of this survey has been done in 2015, making an easier comparison between indicators, the tables have been prepared like those prepared in report 2014.

KRSO is hopefully looking forward to present reports on labor force on a regular base in the coming years to be beneficial to Kurdistan region in making strategic planning and decision making. For instance, the World Bank used KRSO as the first reliable data source to help Kurdistan region governorate (KRG) in designing strategic planning of social insurance.

Serwan. M. M.
President of KRSO

Objectives

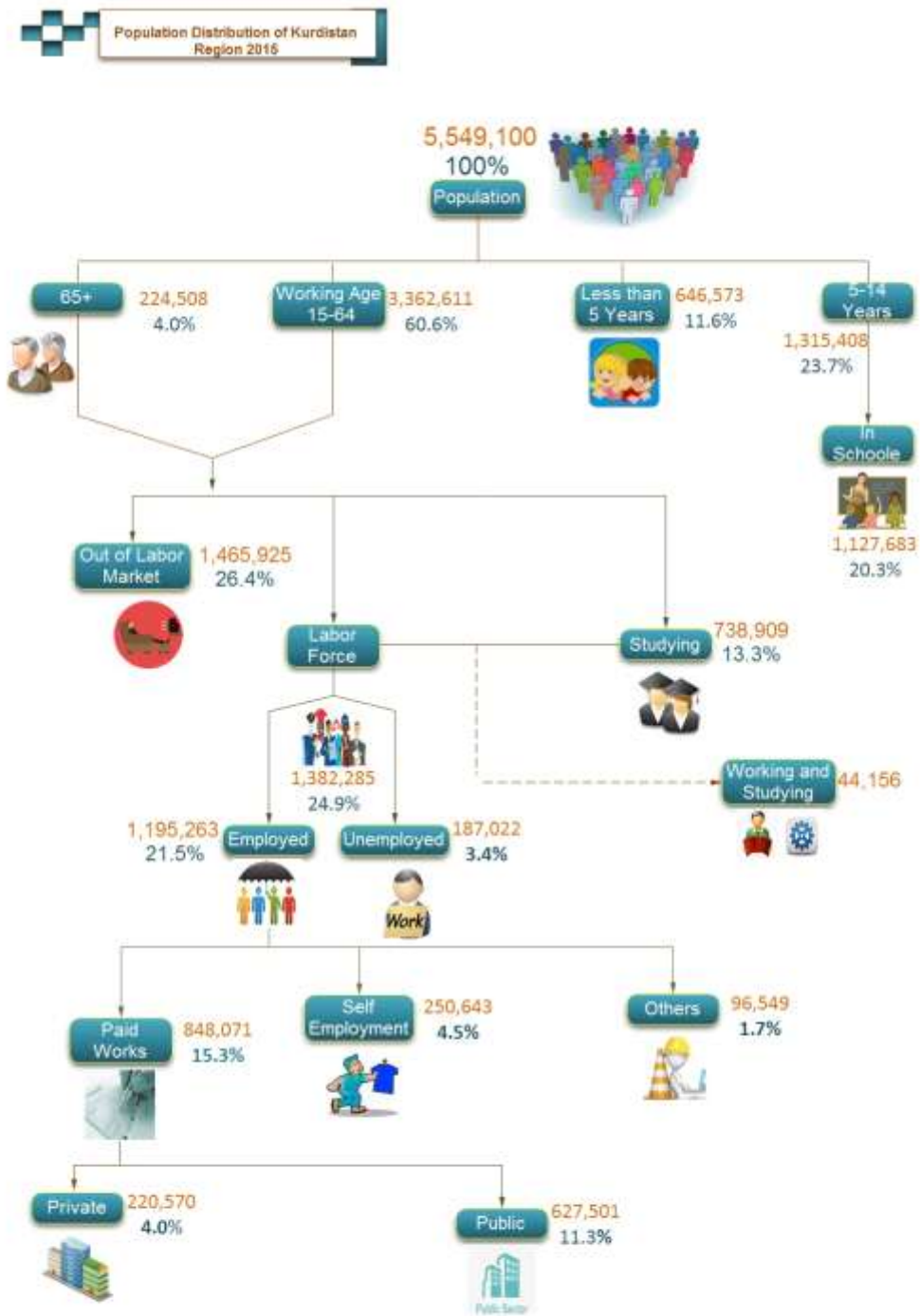
Labor force survey is a concessive annual survey that is carried out in two rounds aims at achieving the following goals:

- ✓ Getting information on population distribution by economic activity in Kurdistan region,
- ✓ Getting information on labor force participation rate in Kurdistan region by governorates,
- ✓ Measuring total participation rate in economic activities with considering different characteristics,
- ✓ Measuring unemployment rate by geographical location, age, sex, etc.,
- ✓ Measuring employed rate by geographical location, education, sex, job sector, etc.,
- ✓ Measuring the employed rate by working hours per week, geographical location, education, sex, etc.
- ✓ Measuring the employed rate by income, geographical location, education, sex, etc.

Advantages

Through a well-organized plan and following the guidelines for statistical surveys in general and for labor force survey in particular, the current reported is now available. The most important advantages that can be taken from the report are listed below.

- ✓ To identify the factors that have an effect on falling and rising unemployment rate in Kurdistan region which could be used by relevant government and non-governmental organizations for their assessment,
- ✓ To monitor the annual changes happen in labor force,
- ✓ To help relevant people in making long and short term plan to create job opportunities for job seekers by education, sex, geographical location, qualification, and competence,
- ✓ To provide scientific support to make a balance between job market and graduates from educational centers,
- ✓ To identify the underemployment/ part-time cases in order to be treated by decision makers,
- ✓ To identify income inequality among different class of people and try to decrease this gap to a reasonable level,
- ✓ To identify multiple jobholders and the reasons behind that and compare their working hours with international standards. This could help decision maker to create an effective action plan in making a better life for people.



Source: Labor Force - 2015

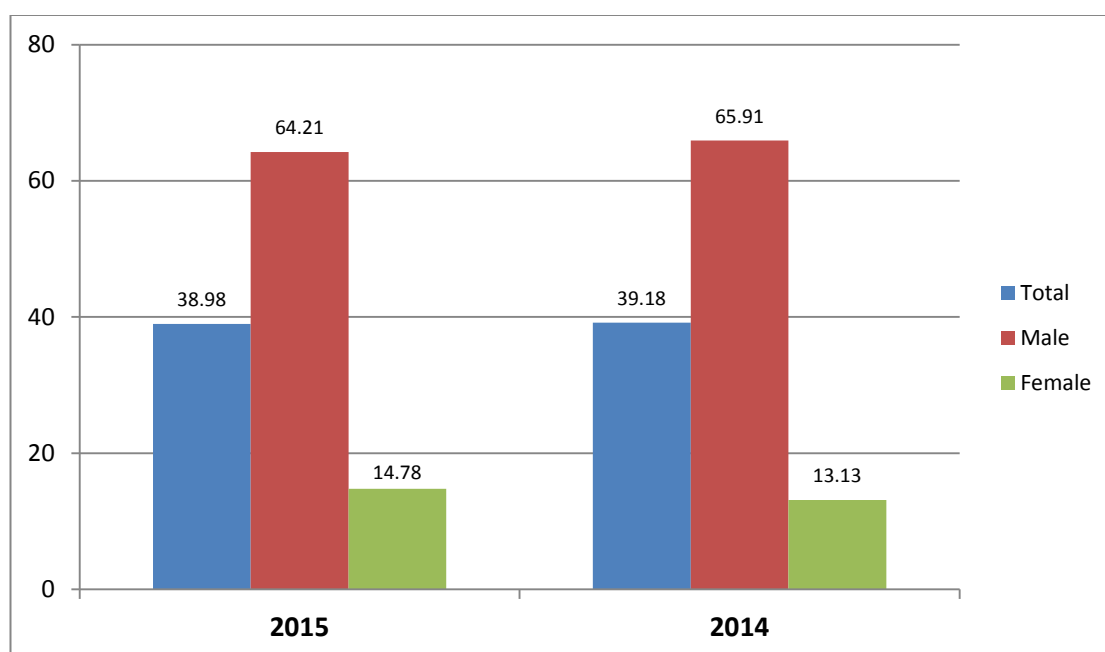
Chapter one (Main results)

1.1 labor force

Labor force contains people aged 15 and above who have work or have no work, but, actively looking for work. These people are also referred to as economically active people.

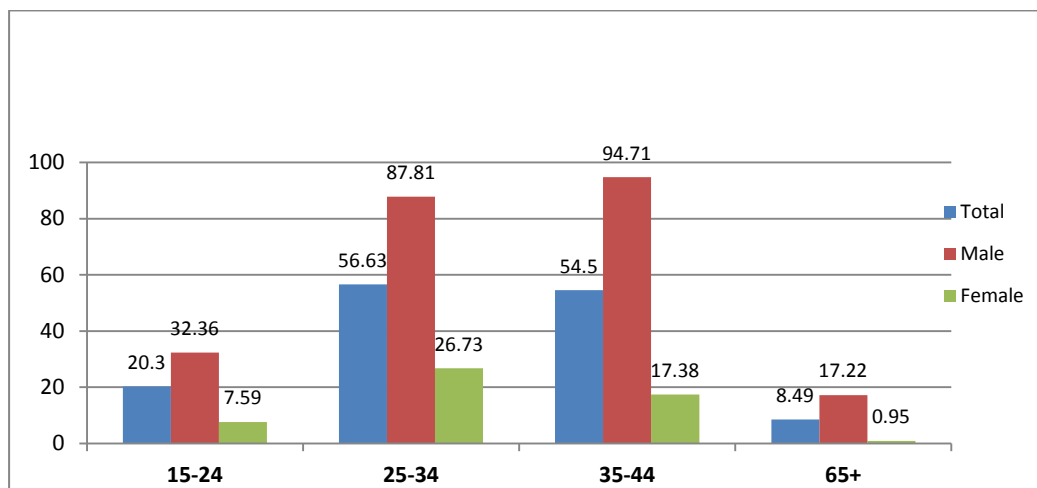
As reported by labor force survey in Kurdistan region in the second half of 2015, labor force participation recorded 39 percent (1,382,285 persons) compared to 39.25 percent recorded in the second half of 2014. The same source reveals the Labor force participation by sex in which men recorded 64.21 percent against 14.78 percent for women. In other words, 1,114,854 persons among men and 267,431 persons of women are economically active. In the second of half 2014, this indicator recorded 66 percent for men and 13.13 for women.

Figure 1) percentage rate of Labor force participation aged 15 and above by sex- second half of 2015



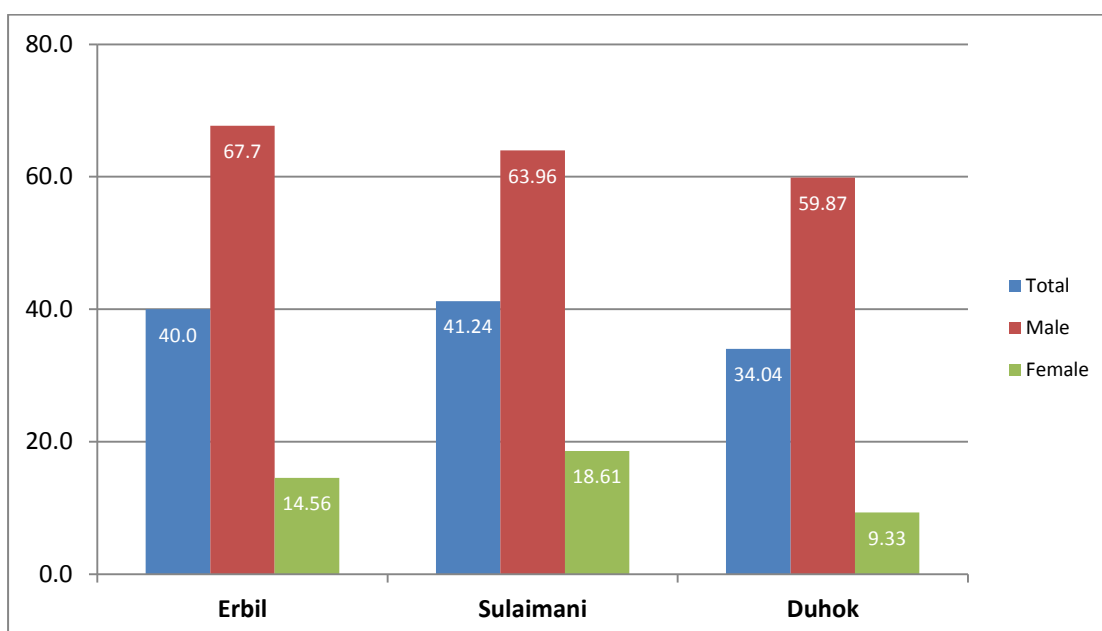
The data also reveals that the age group 25-34 recorded the highest rate in labor force that is 56.6 percent (471,167 persons) in Kurdistan region. Among men, the highest labor force participation rate observed in age group 35-44 accounted for 94.7 percent (293,824 persons), and for women it recorded by the age group 25-34 accounted for 26.73 percent (113,524 persons). The second rank recorded by the age group 25-34 and the age group 35-44 for men and women respectively. For the age groups 15-24, the labor force participation rate recorded 20.3 percent (228,345 persons). Of this, 32.36 percent (186,752 persons) goes for men and 7.59 percent (41,593 persons) goes for women. The age group 65 and over recorded 8.49 percent of labor force. Of this, 17.22 percent (17,767 persons) reported by men and 0.95 percent (1,132 persons) by women. See Table 1.

Figure 2) percentage rate of Labor force participation by sex and age group-second half of 2015



Generally speaking, in the second half of 2015, the labor force participation rate for age group 15 and over was 40.0 percent (518,810 person), 41.24 percent (561,945 persons), and 34.04 percent (301,530 persons) in Erbil, Sulaymani, and Duhok governorate respectively. See Tables 2, 3, 4. Looking by sex, men recorded 67.7 percent (420,669 persons) in Erbil, 63.96 percent (434,882 persons) in Sulaymani, and 59.87 percent (259,303 persons) in Duhok. The share of women in labor force was 14.56 percent (98,141 persons) in Erbil, 18.61 percent (127,063 persons) in Sulaymani, and 9.33 percent (42,227 persons) in Duhok governorate. For more details see Tables 2, 3, 4.

Figure 3) percentage rate of Labor force participation by sex and governorate- second half of 2015



1.2. Labor force status (labor force distribution)

Labor force divided over employed and unemployed. Employed comprises of full time employee and part time employee (under employed). In the second half of 2015, the number of labor force was 1,382,285 in Kurdistan region. Of this, 1,195,263 are employed and 187,022 are unemployed. And among employed, 1,114,758 are full time employed and 80,505 are part time employed. Following covers unemployed and part time employed and more details can be available in Table 1.

As stated by labor force survey in 2015, unemployment rate recorded 13.53% (187,022 persons) in the second half of 2015. This record is near twice 7.13% that recorded at the same period in 2014. In 2015, unemployment recorded 9.71% (108,284 persons) for men and 29.44% (78,738 persons) for women compared to 3.87% for men and 19.63% for women registered in 2014. This comparison makes the changes more obvious.

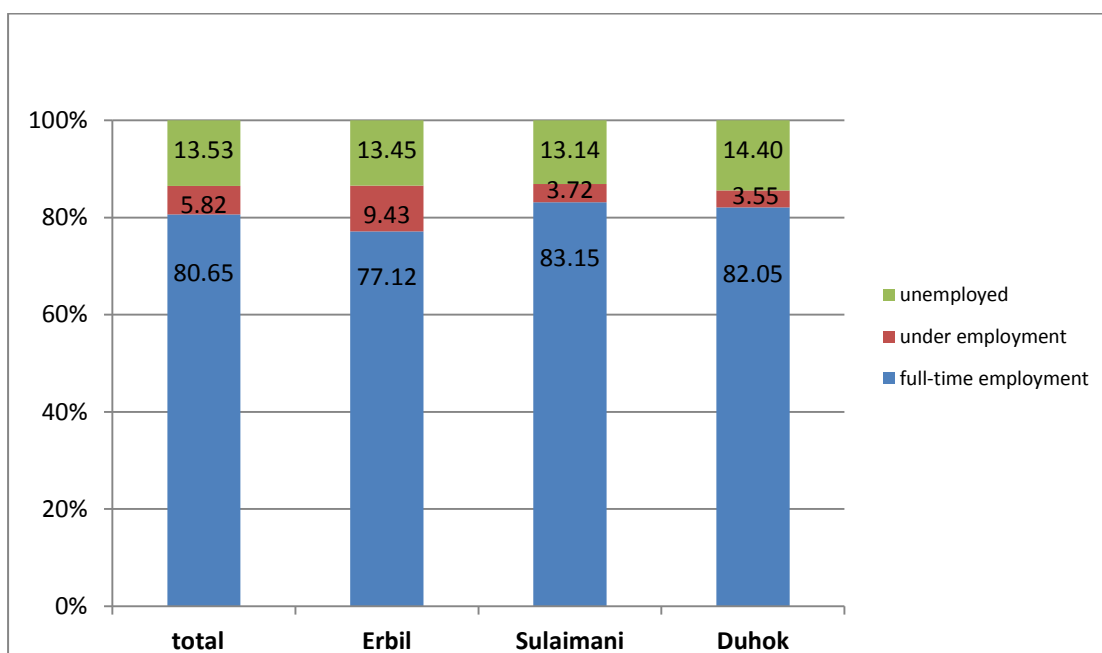
Under employment recorded 5.82% (80,505 persons) in Kurdistan region for the second half of 2015, distributed as follows: 6.51% (72,631 persons) for men, 2.94% (7,875 persons) for women. In the second half of 2014, under employment recorded a total rate of 0.54%, distributed as follows: 1.21% for men and 1.28% for women. As results indicate, in the second half of 2015, under employment shows a considerable rise, near 4.8 times larger than what recorded in 2014. The rapid rise is caused by economic crises faced Kurdistan region started in 2014.

At the level of governorates, unemployment and under employment recorded 13.45% (69,780 persons) and 9.43% (48,916 persons) respectively in Erbil governorate for the second half of 2015. Sulaimani governorate recorded 13.14% (73,822 persons) for unemployment and 3.72% (20,878 persons) for under employment. And Duhok governorates reported 14.4% (43,420 persons) and 3.55% (10,711 persons) on unemployment and under employment respectively. In the second half of 2014, Erbil governorate recorded 5.04% for unemployment and 1.02% for under employment. In Sulaimani governorate, unemployment was 7.83% and under employment was 0.83%. And Duhok governorate recorded 9.41% for unemployment and 2.08% for under employment.

Distributing of unemployment and under employment by sex and by governorates indicates that unemployment was 9.91% (41,672 persons) among men and 28.64% (28,107 persons) among women in Erbil governorate for the second half of 2015. In Sulaimani governorate, unemployment was 8.77% (38,133 persons) among men and 28.09% (35,689 persons) among women. And in Duhok governorate, unemployment was 10.98% (28,479 persons) among men and 35.38% (14,941 persons) among women. In the second half of 2014, these indicators appeared at a very low level comparing to the second half of 2015. In the second half of 2014, in Erbil governorate, unemployment recorded 3.25% for men and 15.29% for women. In Sulaimani governorate, unemployment was 3.91% for men and 22.62% for women. And in Duhok governorate, unemployment recorded 6.81% for men and 26.62% for women.

Like unemployment, under employment shows a significant difference between 2015 and 2014. In the second half of 2015, Erbil governorate recorded 10.3% (43,338 persons) for men and 5.68% (5,579 persons) for women. In Sulimani governorate, under employment was 4.54% (19,746 persons) for men and 0.89% (1,131 persons) for women. Under employment in Duhok governorate recorded 3.68% (9,547 persons) for men and 2.78% (1,165 persons) for women. Making a comparison with 2014, in the second half of 2014, under employment was 1.19% among men in Erbil governorate, while, no record has been reported for women in this governorate. Under employment was 1.04% among men and 0.55% among women in Sulimani governorate. In Duhok governorate, under employment was 2.34% and 0.37% for men and women respectively.

Figure 4) percentage rate of labor force participation by status and Governorates-second half of 2015

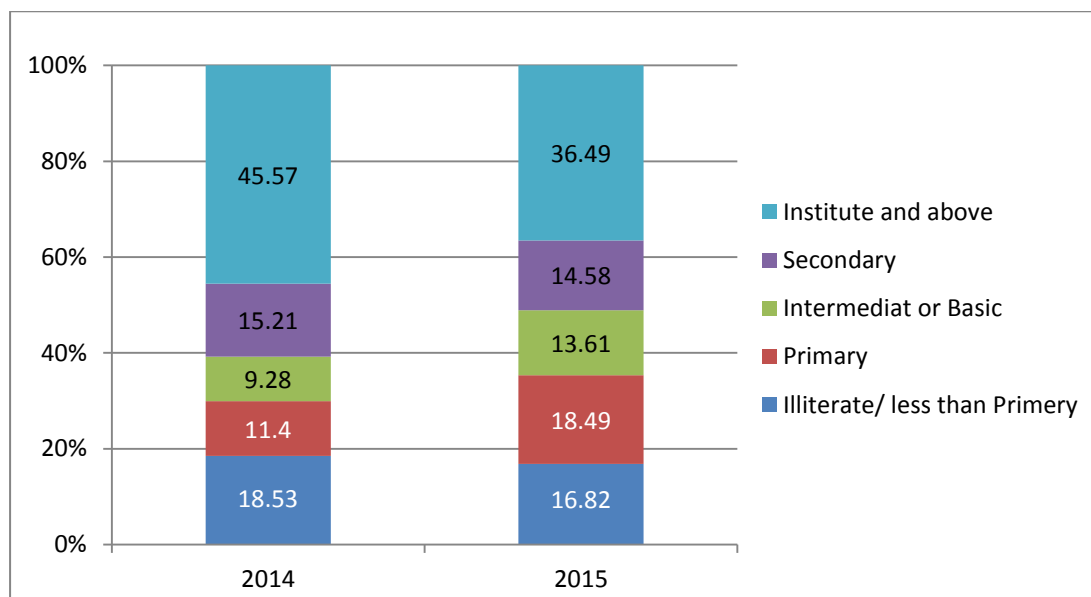


1.3. Labor force by Education Level

Distribution of labor force by education level is very important in labor force. For this reason, in this report has been tried to reveal the figures on this indicator. As stated in labor force survey for the second half of 2015, people with secondary education level comprise the highest level of unemployment rated at 24.2% (27,223 persons), While, underemployment among people with primary education level comprises the highest rate amounted to 6.97% (19,993 persons), Table 5. People with institute education level and above comprise 20.55% (68,127 persons) of unemployment and 5.62% (18,625 persons) of underemployment. What is interesting here is the lower rate of unemployment among illiterates and people with no education level compared to other education levels. This group comprises 6.88% (31,401 persons) of unemployment in the second half of 2015.

The following figure reveals unemployed by education level in 2014 and 2015 to make a comparison between these two years. In this figure we can obviously see the changes happened over selected indicators.

Figure 5) percentage distribution of Unemployed in Kurdistan Region by Education level- the second half of 2014 and 2015



1.4. Class of workers

The results from the labor force survey for the second half of 2015 indicates that the rate of paid workers accounted for 70.96% (848,071 persons). Meanwhile, self-employed recorded 20.97% (250,643 persons) and job owners recorded 5.74% (68,576 persons) of the total number of workers in Kurdistan Region. Unpaid family workers accounted for 2.29% (27,371 persons) and unpaid workers who engaged in a charity work comprised 0.04% (504 persons) of labor force. More details can be found in Tables 25-28.

In the second half of 2014, the mentioned indicators recorded as follows: 75.61% for unpaid workers, 17.24% for self-employed, 5.94% for job owners, 1.16% for unpaid family workers, and 0.04% for unpaid people who engaged in other works or a charity work.

1.5. Economic activity (occupation)

Economic activity is considered as an important point in labor force. This indicator shows workers distribution over economic activities. It also evaluates the balance between distribution and the right condition of activities. In the second half of 2015, the highest rate recorded by workers who engaged in general administrative activities, defense and social security activities that accounted for 26.41% (317,400 persons). Education activities, whole sale and retail trade activities took the second and the third rank accounted for 12.29% (147,677 persons) and 11.99% (144,147 persons) respectively (Table 34). In the second half of 2014, these indicators distributed as follows: general administrative activities, defense and social security activities recorded the first rank accounted for 27.86% followed by the whole sale and retail trade activities (12.83%) and education activities (12.63%).

1.6. Job sector

In Kurdistan region, job sector has been given special attention in term of governmental and non-governmental sector (privet sector) for several reasons. One of the reason is that annual budget cannot meet the government expenditure particularly government employees payment that puts an immense pressure on government. Therefore, government strategy is to encourage people to seek jobs in private sector rather than public sector. For this, collecting data on job sector helps decision makers in their strategy to find job opportunity in right sector. In the second half of 2015, the rate of workers in public sector was 50.35% (605,101 persons) in Kurdistan region (Table 35), distributed at the level of governorates as follows: 52.17% (235,761 persons) in Erbil governorate, 46.97% (230,469 persons) in Sulaimani governorate, and 53.58% (138,872 persons) in Duhok governorate. Comparing to the same period in 2014, this indicator was 49.58% at the level of Kurdistan region, distributed as follows: 49.82% in Erbil governorate, 49.57% in Sulaimani governorate, and 53.27% in Duhok governorate. As figures indicate, there is not significant different between these periods at the level of Kurdistan region. There is an increase of less than 1% in 2015 compared to 2014 at the level of Kurdistan region, but at the level of governorates the changes are more obvious.

The results for the second half 2015 indicate that about 76% (143,560 persons) of women labor force are engaged in public sector against 22.2% (42,078 persons) that recorded in privet sector. Comparing to the second half of 2014, a decrease can be observed in public sector in 2015, while, privet sector shows increase. In the second the half of 2014, 79.39% of women labor force was engaged in public sector against 19.81% that recorded in privet sector (Table 35).

Figure 6) Employees percentage Rate in Governmental Sector by Sex- the second half of 2015

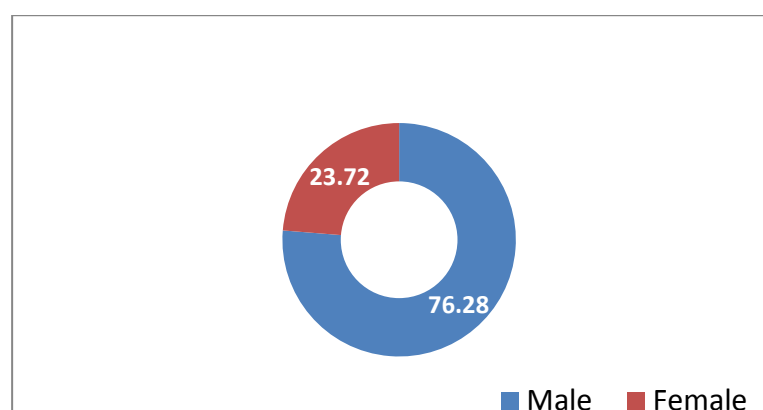
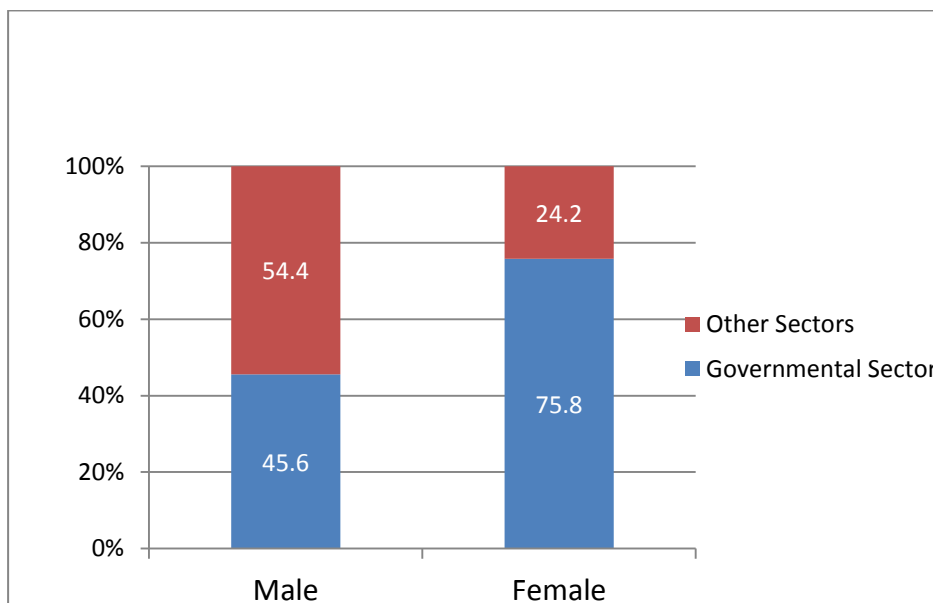
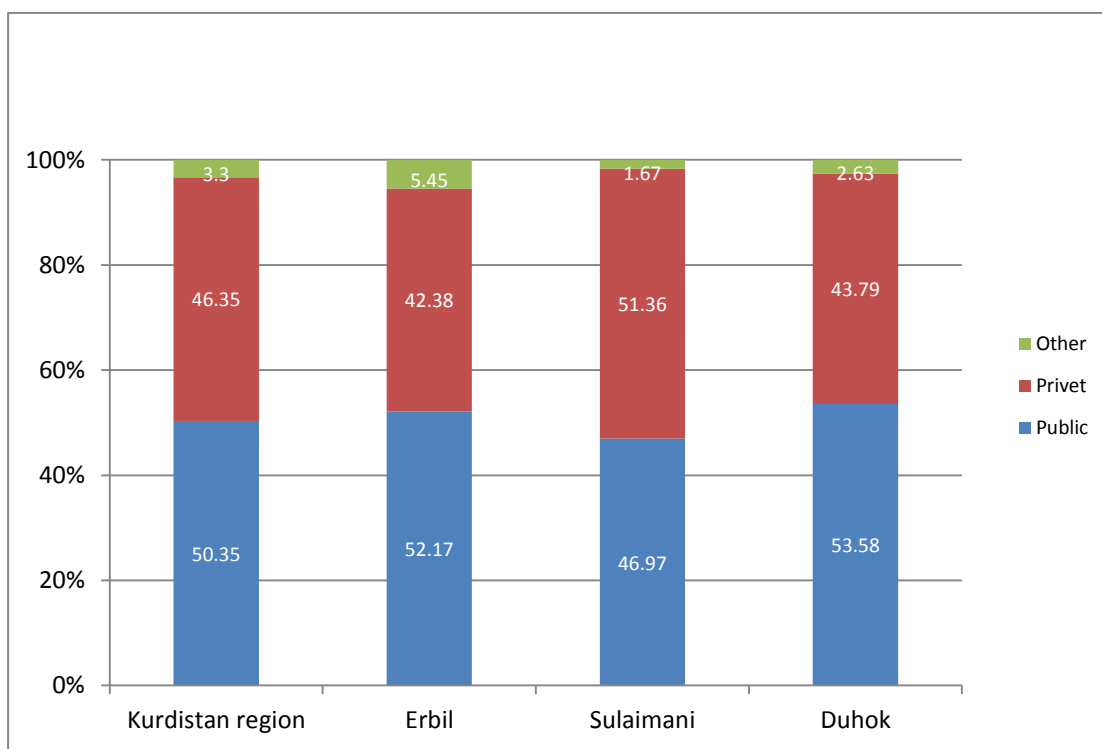


Figure 7) Employees Percentage Rate by Sex and Job sector- the second half of 2015



As results show, in the second half of 2015, changes happened in the job sectors in governorates. The changes are more obvious in privet sectors where Sulaimani governorate recorded the highest level in 2015 as well as in 2014 compared to other governorates, but, the difference between Sulimani and other governorates is bigger in 2015.

Figure 8) Percentage Distribution of workers aged 15 and over by job sector- second half of 2015



1.7. Main occupation

Table 36 shows distribution of workers by their main job in the second half of 2015. It shows that the highest rate goes for those who engaged in service and sailing activities that comprises 21.61% (259,734 persons) of labor force. Next, come people who work in military activities that comprises 16.93% (203,487 persons) of the total labor force. And the third group belongs to office workers rated at 12.7% (153,381 persons). In the second half 2014, the highest rate recorded by those involved in service and sailing activities as main occupation rated at 23.63% followed by experts and professionals that comprises 16.16% of labor force and people who work in military occupied the third rank rated at 16.15%.

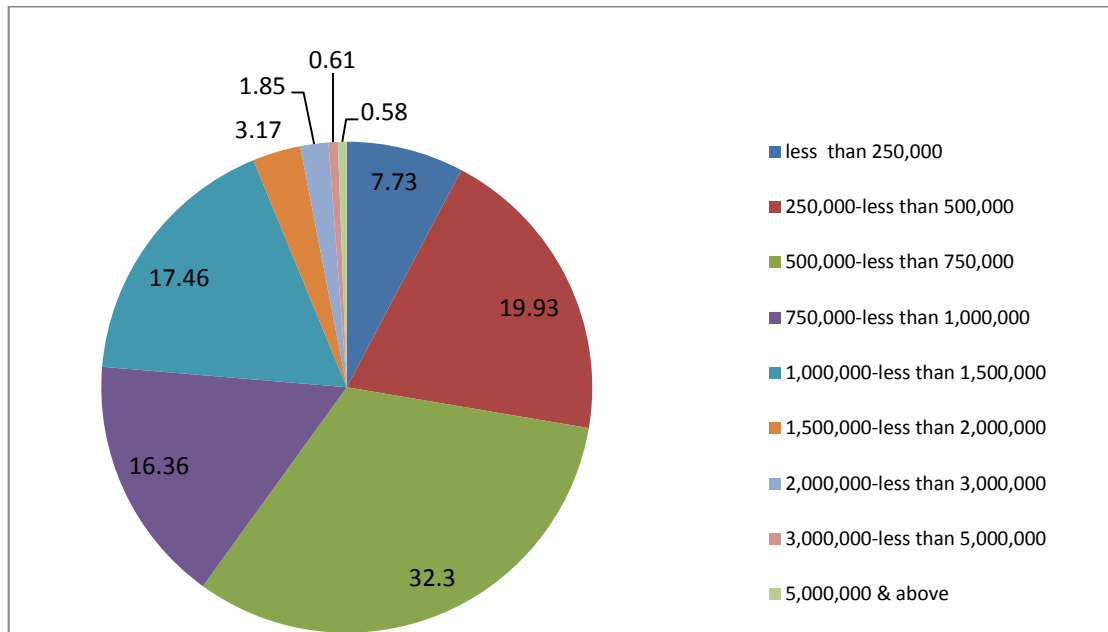
1.8 Nature of employment

In the second half of 2015 in Kurdistan region, people who engaged in a permanent job comprise 85% (1,023,438 persons) of employed. People who engaged in a temporary job for a specific time period or seasonal work recorded 6.92% (83,112 persons). And, casual workers who work on occasional basis recorded 4.22% (50,665 persons). In the second half of 2014, these indicators reported as follows: 81.61% in a permanent job, 11.68% in a temporary job for a specific time period, and 3.76% in casual works (Table 37).

1.9. Monthly income

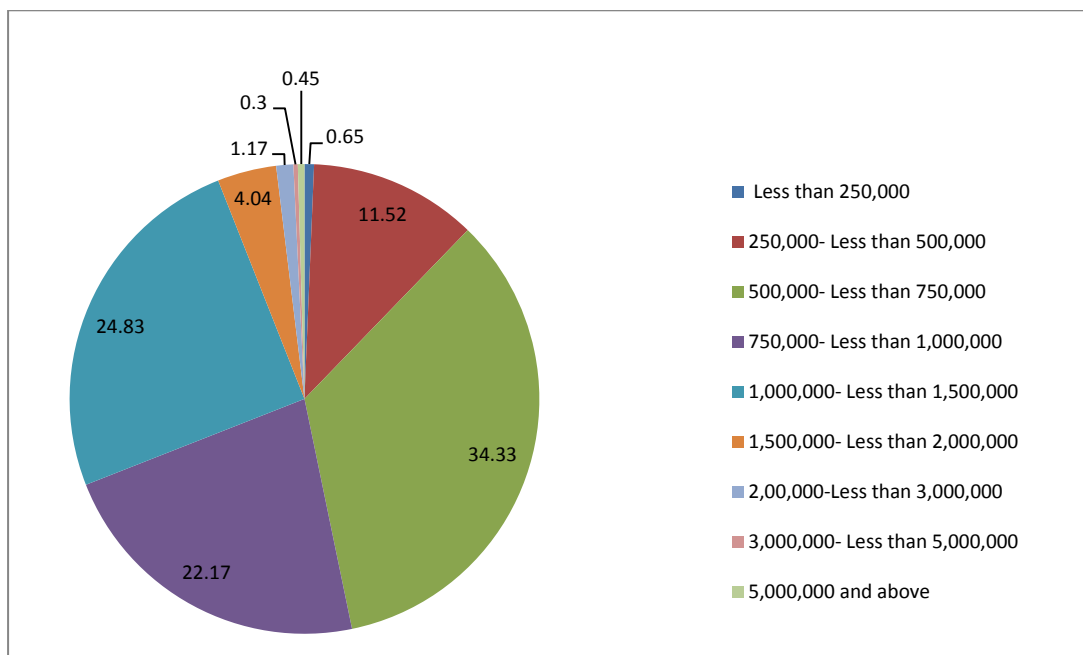
Income is a substantial and an important point in analyzing the economic situation of any region. The results from the second half of 2015 indicate that more than 32% (386,881 persons) of employed have an income of 500,000 - less than 750,000 ID. This income group recorded the highest level compared to other income groups. More than 34% (207,544 persons) of employed who engaged in public sector belong to this income group. The second highest income group that comprises 19.93% (238,693 persons) of employed goes to income group 250,000 – less than 500,000 ID. More than 76% (914,148 persons) of employed have a monthly income of less than 1,000,000 ID. 69% (418,363 persons) of employed in public sector have a monthly income of less than 1,000,000 ID, and more than 94% of employed in public sector have an income less than 1,500,000 ID As revealed in Table 38.

Figure 9) Percentage Distribution of employed by monthly income group-second half of 2015



The result from the second half of 2014 reveals that 36% of workers have a monthly income of 500,000-less than 700,000 ID. The same income group recorded the highest level in the public sector as well that accounted for 33.75%. The second highest income group goes to income group 750,000-less than 1,000,000 ID accounted for 18.35%. Whereas, in public sector, the second highest income group goes to income group 1,000,000-less than 1,500,000 ID accounted for 23.29%. In the second half of 2014, more than 75% of workers have an income less than 1,000,000 ID.

Figure 10) Percentage Distribution of employed in Governmental sector by monthly income group-second half of 2015

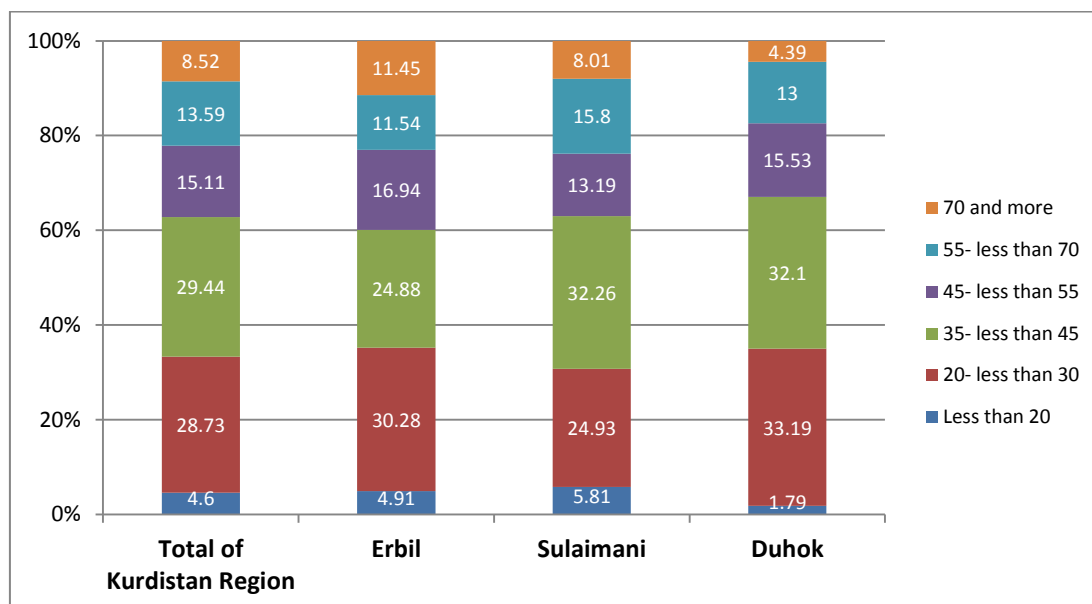


1.10. Weekly working hours and income

Weekly working hours is the factor that distinguishes the full-time worker from the part-time worker. The second half of 2015 survey (Table 41) indicates that the highest weekly working hours recorded by workers who work between 35-less than 45 hours per week accounted for 29.44% (352,632). Workers who work between 20-less than 35 hours per week recorded the second rank accounted for 28.37% (344,090 persons). In general, more than 33% (399,216 persons) of workers work less than 35 hours per week. People, who work more than 55 hours per week, at least 9 hours per day with only one day off a week, recorded a high rate of above 22% (264,872 persons).

Working 55 hours per week recorded a high rate of labor force and this case is prevalent among self- employed who don't need to abide by standard of working hours that is 8 hours per day (Table 41).

Figure 11) Percentage Distribution of workers by weekly working hours- second half of 2015



Chapter two (Methodology and quality)

2.1. Questionnaire

The questionnaire (form) of the survey is the main tool that used to calculate data and information. The labor force questionnaire designed in consistent with the rules of international labor Force Organization (ILO) in which the Kurdistan Region's characteristic has been taken into consideration. In the questionnaire all technical characteristics of field work, editing, processing, and analysing have been taken into consideration. The questionnaire consists of the following main sections:

2.1.1. Household identification

The aim of this section is to identify all information that lead to identify the household that comprises cluster number, governorate, district, sub-district, name and number of the quarter, number of building, number of household in cluster, the name of the head of the household, the number of household's member, the result of interviewing, etc.

2.1.2. Household's record section

It consists of general information on demographic and social condition of household, like, the name of household's members, household members' relationship to the head of household, age, gender, level of education, type of education certificate, marital status and etc.

2.1.3. Employment status section

This is the main section of Questionnaire that comprises four parts which includes labor force participation, employment, unemployment, and temporary work. The questions of these parts are directed to those who are aged 12 and above aimed at collecting information on the distribution of labor force and its most important characteristics like the employment status, economic activities, the place of working and more other indicators on labor force.

2.2. Frame and sample

2.2.1. Targets

The target population consists of people aged 12 and above who are resident of Kurdistan Region.

2.2.2. The frame of the sample

The frame of the sample is designed base on the frame of the 2009 blocking and numbering process that had been prepared for Population census. The frame was renewed and finally 1,292,297 blocks were selected across Kurdistan region. Each block covers the whole place or a part of a place (quarter or village). In other words, each quarter or village may be divided between one or more than one blocks. Sampling the labor force survey, the blocks have been taken as the main unit and the households as the secondary unit. Of these blocks, 700 blocks have been selected. Each selected block is known as cluster. And from each cluster 10 households have been selected to be interviewed.

2.2.3. Sample size

The size of the sample is 14,000 households in general, In other words, 7,000 households for each round of the survey. In 2015, as only one round of survey was carried out, the sample size decreased to 7000 households.

2.2.4. Sampling

The sample of this survey is selected based on the labor force survey 2012 in Kurdistan region that was designed by “American institute for research and development (RAND). The way of selecting sample in this survey is completely different from other surveys. In all surveys, the number of selected households is the same in all districts, but in the labor force survey, the number of households has been selected by the size of population in each district. To reach this aim, districts have been classified by the size of population, where, selected households fluctuate between 160 to 400 households. For instance, in the center of Erbil, Sulaymani, and Duhok governorates that are the most populous places, 400 households have been selected while, in districts like Rawandoz in Erbil and Mawat in Sulaymani that are the smallest by population, 160 households have been selected.

2.2.5. Sample rotation

This survey is conducted in different rounds every year. In order to observe the differences between the results that are achieved through every rounds of the survey, a part of the sample participates in the survey and the other part removed and shifted with other. Doing such a change in sample is called “rotation”. The half of the sample that amounts to 3500 households is removed from the survey in every round and new households enter in the next round. In this way, the sample does not completely change in every new round and **it is** not completely the same as the previous one. But, the third round is completely different from the first one and all the households in the first round would be shifted with the new ones in the third round and the second round would be totally different from the fourth round and the survey continuous in the same way.

2.3. Weighting

In order to generalize the results of a sample survey and represent the whole population attribute, we need to weight the results to know how many people in the society are represented by each individual in a sample survey. There are some rules and formulas in place to weight the results.

2.4. Field work

The field work is the most important stage in any survey to collect data from the first sources. A successful field work could guarantee a successful survey and this could not be achieved without a precise and accurate work. The field work of this survey is conducted during 10 days during which the teams visit households to collect information. Also, the sample frame of this survey is renewed every two years through a field work that lasts for 8 days.

2.4.1. Selecting and training the researchers

A training course is provided to people who are selected to conduct the interview, whether the new ones or those with previous experience in collecting data. The course provides information on the mechanism of conducting a successful interview during the scheduled time.

The course also provide information on the system of the field surveys and research resource, sample selecting, labor force survey attributes, main terms, field environment and how to make a friendly contacts with responders that have a direct impact on the final results. The field and office checking of the collected data are other subjects that are covered through the course. Well-organized courses with rich and detailed information are main factor in producing main indicators that reflect the real situation of the society.

2.4.2. Encoding

Coding is an important stage that has a great role in most surveys as well as in the labor force survey. But, in the current survey, the role of coding is not as visible as it should be, because jobs and economic activities that are the most important topics in the labor force survey have not been divided into sub divisions. All related activities have been listed under one code and annexed to the questionnaire where it could be used by researchers, supervisor, and editors in order to code the activities. This survey has applied the International Standard Industrial Classification 2008 (ISIC 2008) that organized at third level and does not have more details. Jobs and economic activities have been gathered in a list and attached to the questionnaire.

2.5. Data entry and data treatment

2.5.1. Data entry

The completed questionnaires are sent to office for checking before they pass data entry process. CSPro program apply by analysis department for installing the data entry program. Then this program would be sent to statistics directorates where data entry would be done. Data entry program has ability of auto correcting and it could be considered as a quality control. For instance, the questions that should be escaped, questions about the specific age group or gender, or the questions that their responds depend on the characteristic of the respondent, all these cases could be automatically controlled and corrected if any mistakes happen.

2.5.2. Data treatment

Data treatment is a step before data analysing. In this stage, data needs to be checked in order to find if the responds are acceptable or not. In other words, this stage checks to find the cases that has not been responded or vice versa and to identify not acceptable responds. For instance, where the marriage age has been recorded less than 15 years old, that is not an acceptable respond. This data needs to be checked especially if it happens in more than one place by some specific researchers. After data entering, all these cases would be reported by data entry program and would be treated or settled before it passes the tabulation and statistical analysis stages.

2.6. Data quality

Data quality refers to the level of quality of data and is a wide process. It started from the very beginning step of survey that is planning and extends to the end that is data publishing and using by users. Data quality has seven characteristics that consist of: reality (Coherence), Punctuality, timeliness, Accessibility, comparability, Consistency (strength) and Integrity (completeness).

2.7. Data accuracy

No survey is free of error and we can't deny the existence of error, but there are different scientific ways to reduce the rate of error in statistical works. There are two kinds of error, statistical and non-statistical errors.

2.7.1. Statistical error

The statistical errors are errors that happen during selecting samples. The labor force survey like all other surveys is not free of these errors. The first and the most important of these errors is the lack of a complete and updated statistical frame that helps to select a suitable sample. In the current survey, much effort has been exerted to be away of such errors. The main frame of this survey has been taken from "2009 numbering and blocking process", and then it was updated through a field work by visiting the households that were living in the places that were going to be sampled and surveyed. In this way it was able to avoid a part of error. But there were errors that had influence on the sample and could not be avoided due to new villages and quarters that were established after process of numbering and blocking 2009.

2.7.2. Non-statistical error

Non-statistical error refers to all errors that rise during data collecting or data entry. The most important of these errors come from unsuccessful interviewing due to several reasons like refusing the whole interview or some questions (not complete interview), not being at home, wrong information provided by respondents (not being honest in responding), the errors that are caused by interviewer, like an ill treatment of interviewer, careless about the respondents' feeling, inability to make the respondent to understand the question in particular and the survey in general, and the errors that pertain to data entry....etc.

Non-statistical errors could be reduced by applying a better mechanism, a better supervising over field work, providing qualified training courses, following guidance, and selecting capable trainers. All these factors are essential to improve the process of survey that lead to a qualified data and reliable results.

One of the points that have a negative effect on the result of the survey is the income of individuals that is considered as a sensitive point and the researchers may get wrong answer to this question because of two reasons. First, unwillingness of the respondent to give the right answer to this question and second, not getting the responds directly from the proposed person, because one may answer the questions about the income instead of all individuals especially when they are not at home at the time of visiting.

2.7.3. Response rate

As mentioned above, the response rate, and its effect on the final result and analysing and even the next process is considered as non-statistical error. Due to economic crises, only one round of labor force survey was carried out in the second half of 2015 through which 7000 households were selected, distributed as follows: 2190 households in Erbil, 3130 households in Sulaimani, and 1680 households in Duhok governorate.

In this round, 6136 households (34676 individuals) were completely interviewed. The Total response rate was 87.66% in Kurdistan region, 85.34% in Erbil governorate, 88.69% in Sulaimani governorate, and 88.75% in Duhok governorate.

2.8. Comparability

Comparability is one of the most important attribute that used in data analysing. For this reason any survey should have the ability to be compared to other surveys by time and place. Since the labor force survey has been done in Kurdistan region before, the current results could be compared with previous surveys by time and place. In this report, the comparison has been made between different places surveyed in 2015 and also between 2015 and previous years.

2.9. Quality control

The aim behind quality control is to control the whole process of the survey with regards to the field and administrative work and filling up questionnaire in right order. The process of the survey consists of collecting data, field editing, office editing, coding, data entry, final editing, and data storing. In order to overcome problems, there are some codes and rules in place for each of these stages.

To have a qualified and reliable data, several steps need to be taken from the beginning till the end of the survey. For instance, training the field workers, training the data entry staff on data entry program, checking the data entry program to see if it properly work, checking the collected data before it pass data entry process, as well as preparing a report over the problems or inadequacy of data after or during data entry in order to fix them.

Also, the field workers were continually in contact with supervisors and directors of the survey in governorates or districts to avoid any problem might happen during the field work. Making this contact is important because, first, it makes the staff to solve problems in the field and makes the staff to be free to continue the next steps. Second, to inform all other teams of happening the same problems and have the solution to these problems in advance to save the time and not to be in need to prolong time as it has been considered in the survey's time table.

Chapter three (terms and concepts)

To have a clear and better understanding of the labor force survey and avoiding any misunderstanding and unscientific analysis, in this chapter has been tried to represent and define the terms and concepts that help users to better understand the indicators of the labor force.

Household: statistically speaking, it refers to a person or a group of people that may have or have not blood relation to each other and live in one place together with a common provision for food and other cost of living.

Working age population: it refers to all individuals who aged 15 and above.

Labor force (economically active): all people who involved in workforce aged 15 and above and the definition of labor force could be applied to them. In other words, together the unemployed and employed make the labor force, whether have a job, or have no job, but are available for work and actively seeking work at the time of reference

Not in the labor force (economically inactive): it consists all people who are at working age, but neither working nor seeking work during the reference time, because they are unwilling to work or don't need to work or because of other reasons. This group includes:

1. **People who pursue education full time:** they are people who are attending education in a regular basis - currently attending school-in order to obtain an educational level and didn't participate in any work during the reference time. People who do house work or do an activity as hobby are not included in this group.

2. **Homemaker:** homemaker refers to a person (woman or man) who is not participating in any work or education instead attending the household and serving the family during the reference time. This definition doesn't include servants who are paid in cash or in kind for their work, because they are counted as employee.

3. **Careless about working:** it refers to a person who is in working age but is jobless and doesn't do any efforts to find a job or attend education during the reference time.

4. **Guest:** it is defined as a person who lives in an organization like, Jail, mental institution, nursing home or other places.

5. **Elderly/ disabled:** it is defined as people who are not able to work due to a long term disease, disability, and age.

6. **Retiree / have an income:** it includes people who are unwilling to work because of having pension or other source of income.

Labor force status: people who participate in labor force are classified into two groups of employed and unemployed. Employed are classified into full-time employment and underemployment. Unemployed are people who are out of work and definition of unemployed -without work but, actively seeking for work- could be applied for that.

Reference time: it consists the week before the date of interviewing.

Work: is an activity to be done in order to achieve a result. The work could be paid or unpaid. In case of being paid, it would be paid base on a monthly, weekly and daily salary or for a part of share...etc. An example of unpaid work, we can refer to working on a family farm or project.

Employed/ Worker: people aged 15 and above who participate in a specific work even for one hour at the time of reference. The worker could be a paid worker, unpaid worker (like who work in a family land or project) or an own-account worker. The term of worker is also applicable to People who are on vacation and are temporary away of work because of sickness, holiday, work stopping, or any other reason. In term of hours worked, the workers divided into two groups. The first group includes those who work less than 35 hours per month. And the second group includes those who work at least 35 hours per month. In term of condition, the workers divided into the followings:

1. **Job owner:** a person who works in a firm or in a factory that owns the whole or partial share of enterprise and has at least one employee. This definition also includes who attends the job outside the enterprise as an attorney and at least has one employee that is paid on his or her account (attorney's account). Job owner does not include those who just pay a share even her or she works in the enterprise.
2. **Self-employed person:** a person working in a firm or in a factory that owns the whole or partial share of the job and has no employees to be paid.
3. **Paid worker:** a person who works for other person or works in an enterprise – government or non-government-for a specific pay on monthly, weekly or daily basis or any other way. Temporary employed and those who work in a family project or farmland are also included in this definition.
4. **Unpaid family worker:** it refers to that member of the family who works for the family for no paid or any share of the profit, like working in a family project or family land.

Unemployed (accordance with international labor organization): unemployed is assigned to individuals aged 15 and over not engaged in any paid job, but are available to work during the reference time and seeking a job through advertised vacancies in newspapers, magazines, recruitment agency, asking friends, and other ways.

Under employment/ Part-time employed: are those people who have a paid job and work less than 35 hours per week and willing to find additional job and seeking work.

Main job (main occupation): is that job someone does habitually. In other words, the job that someone is engaged half or most of his /her time on it or more occupied with than other jobs during the last months. If someone is engaged in two activities with the same working hours, the activity that has been started first is counted as the main job.

Occupation: is consists of an activity that someone 1) is currently doing if he /she has currently a job or 2) had before if he / she is currently jobless. Occupation has nothing to do with type of work, education, or training.

The main economic activity of the enterprises: is the activity that is done in an enterprise and the enterprise has been established for that specific activity in consistent with the fourth international standards classification for economic activities. If more then on activity is done in the enterprise, the activity that has the bigger share and the larger production is considered as the main economic activity.

Not present at work: it includes employed people who have a job but not present at job at the time of reference because of sickness, vacation, restriction, curfew, job closing, temporary being dismissed from job etc.

Job seeker: is a person who is unemployed and willing to have a job and divided into:

1. **Available to work:** is a person who is willing to work and there is no excuses to refuse the work if there is any, but does not do any efforts to find a job.
2. **Actively looking for work:** is a person who is available and willing to work and actively looking for a job through job advertised in newspapers, magazines, asking friends or relatives, recruitment agency, visiting job owners, or any other efforts.

Work sector: it refers to that place where a person works in it and divided into:

1. **Government sector:** it refers to the place or organization that is affiliated to government and people who are engaged in any kind of work (administration, management, service, etc...) paid by government.
2. **Public sector:** it refers to the place or organization affiliated to government that doing a productive activity (goods production, service) and funded by government.
3. **Mixed public-privet enterprise:** is refers to that enterprise jointly shared by government and privet regardless the amount of sharing.
4. **Cooperation enterprise:** it is a place or organization owned by its members in cooperation with each other and its capital consists of several shares.
5. **Privet enterprise:** it is a place or organization owned by one person or several persons that have the residency of the country. This place or organization is neither administrated nor founded by government.
6. **Foreigner:** it is an organization that is entirely owned by a foreigner or foreigners.

School years (successful years): it consists the years which someone successfully passes. The repetition years, the interrupted years during which a person is away from education, and the short time courses (less than 9 successive months) are not counted as school years.

Working hours: the amount of hours someone spends at work per day, per week, or per month. There are two kinds of working hours as mentioned below:

1. **Normal working hours:** are amount of hours which an employed usually spend on work (part-time or full time).

2. **Practical working hours:** are amount of hours during which an employed is practically working and for each main job and sub job is separately counted. This definition does not include the overtime, and break time.

Monthly working days: it is defined as the number of days on which someone works within one month except the off days, weekend days, sick leave or any other leaves paid or not paid. If someone works for only one hour per a day, it is counted as working day.

Cash payment: it is amount of money given by employers to employees or workers for what they offer. What has been recorded in this survey is the amount of money is known. If the money is paid in foreign exchange then it is converted to Iraqi Dinar based on daily rate.

Appendix 1 (Tables)

Table 1) Distribution of Population Aged 15 Years and Above by in Kurdistan Region by Sex, Age Group, Labor Force Status, Economically Being Active and Inactive, Number and Percentage - Second Half 2015

Sex and Age Group (Year)	Total	Active	Inactive	Total	Full Employment	Under Employment	Unemployed
Both Sex							
15-24	1,124,793 100	228,345 20.30	896,449 79.70	228,345 100	143,089 62.66	11,581 5.07	73,675 32.26
25-34	832,056 100	471,167 56.63	360,889 43.37	471,167 100	359,897 76.38	31,078 6.6	80,192 17.02
35-44	646,293 100	352,242 54.50	294,052 45.50	352,242 100	310,676 88.2	22,012 6.25	19,554 5.55
45-54	429,410 100	211,282 49.20	218,128 50.80	211,282 100	191,738 90.75	10,672 5.05	8,872 4.20
55-64	290,444 100	100,351 34.55	190,093 65.45	100,351 100	92,268 91.95	4,145 4.13	3,938 3.92
65+	222,711 100	18,899 8.49	203,812 91.51	18,899 100	17,089 90.43	1,018 5.39	792 4.19
Total	3,545,707 100	1,382,285 38.98	2,163,422 61.02	1,382,285 100	1,114,758 80.65	80,505 5.82	187,022 13.53
Male							
15-24	577,133 100	186,752 32.36	390,381 67.64	186,752 100	130,496 69.88	11,315 6.06	44,941 24.06
25-34	407,279 100	357,643 87.81	49,636 12.19	357,643 100	291,553 81.52	26,882 7.52	39,208 10.96
35-44	310,222 100	293,824 94.71	16,398 5.29	293,824 100	262,236 89.25	19,271 6.56	12,318 4.19
45-54	204,282 100	174,923 85.63	29,359 14.37	174,923 100	157,834 90.23	10,001 5.72	7,088 4.05
55-64	134,151 100	83,946 62.58	50,205 37.42	83,946 100	75,863 90.37	4,145 4.94	3,938 4.69
65+	103,185 100	17,767 17.22	85,419 82.78	17,767 100	15,957 89.82	1,018 5.73	792 4.46
Total	1,736,251 100	1,114,854 64.21	621,397 35.79	1,114,854 100	933,939 83.77	72,631 6.51	108,284 9.71
Female							
15-24	547,661 100	41,593 7.59	506,068 92.41	41,593 100	12,593 30.28	266 0.64	28,734 69.08
25-34	424,777 100	113,524 26.73	311,252 73.27	113,524 100	68,344 60.20	4,196 3.70	40,984 36.10
35-44	336,071 100	58,417 17.38	277,654 82.62	58,417 100	48,441 82.92	2,741 4.69	7,236 12.39
45-54	225,129 100	36,359 16.15	188,770 83.85	36,359 100	33,904 93.25	671 1.85	1,784 4.91
55-64	156,293 100	16,406 10.50	139,888 89.50	16,406 100	16,406 100	0 0	0 0
65+	119,526 100	1,132 0.95	118,394 99.05	1,132 100	1,132 100	0 0	0 0
Total	1,809,456 100	267,431 14.78	1,542,025 85.22	267,431 100	180,819 67.61	7,875 2.94	78,738 29.44

Table 2) Distribution of Population Aged 15 Years and Above in Erbil Governorate by Sex, Age Group, Labor Force Status, Economically Being Active and Inactive, Number and Percentage - Second Half 2015

Sex and Age Group (Year)	Total	Active	Inactive	Total	Full Employment	Under Employment	Unemployed
Both Sex							
15-24	399,020 100	86,775 21.75	312,245 78.25	86,775 100	51,382 59.21	6,938 8.00	28,455 32.79
25-34	327,365 100	181,141 55.33	146,224 44.67	181,141 100	132,401 73.09	19,923 11.00	28,818 15.91
35-44	232,260 100	130,864 56.34	101,396 43.66	130,864 100	109,730 83.85	13,211 10.09	7,923 6.05
45-54	156,919 100	76,353 48.66	80,566 51.34	76,353 100	68,292 89.44	5,558 7.28	2,503 3.28
55-64	101,648 100	36,012 35.43	65,636 64.57	36,012 100	31,533 87.56	3,086 8.57	1,393 3.87
65+	79,930 100	7,664 9.59	72,266 90.41	7,664 100	6,776 88.41	201 2.62	687 8.97
Total	1,297,142 100	518,810 40	778,331 60	518,810 100	400,115 77.12	48,916 9.43	69,780 13.45
Male							
15-24	201,554 100	73,457 36.45	128,097 63.55	73,457 100	47,851 65.14	6,938 9.44	18,667 25.41
25-34	153,645 100	138,117 89.89	15,528 10.11	138,117 100	105,946 76.71	16,497 11.94	15,674 11.35
35-44	116,984 100	111,406 95.23	5,578 4.77	111,406 100	96,563 86.68	11,357 10.19	3,486 3.13
45-54	71,955 100	61,456 85.41	10,499 14.59	61,456 100	54,434 88.57	5,258 8.56	1,764 2.87
55-64	45,205 100	28,847 63.81	16,358 36.19	28,847 100	24,368 84.47	3,086 10.70	1,393 4.83
65+	33,872 100	7,387 21.81	26,486 78.19	7,387 100	6,498 87.97	201 2.72	687 9.31
Total	623,215 100	420,669 67.50	202,545 32.50	420,669 100	335,660 79.79	43,338 10.30	41,672 9.91
Female							
15-24	197,466 100	13,319 6.74	184,148 93.26	13,319 100	3,531 26.51	0 0	9,788 73.49
25-34	173,720 100	43,024 24.77	130,696 75.23	43,024 100	26,455 61.49	3,425 7.96	13,144 30.55
35-44	115,276 100	19,458 16.88	95,818 83.12	19,458 100	13,167 67.67	1,853 9.52	4,438 22.81
45-54	84,964 100	14,897 17.53	70,067 82.47	14,897 100	13,859 93.03	300 2.01	738 4.96
55-64	56,443 100	7,165 12.69	49,277 87.31	7,165 100	7,165 100	0 0	0 0
65+	46,058 100	278 0.60	45,780 99.40	278 100	278 100	0 0	0 0
Total	673,927 100	98,141 14.56	575,786 85.44	98,141 100	64,455 65.68	5,579 5.68	28,107 28.64

Table 3) Distribution of Population Aged 15 Years and Above by Sex, Age Group, Labor Force Status, Economically Being Active and Inactive, Number and Percentage in Sulaimani Governorate - Second Half 2015

Sex and Age Group (Year)	Total	Active	Inactive	Total	Full Employment	Under Employment	Unemployed
Both Sex							
15-24	402,493 100	80,284 19.95	322,209 80.05	80,284 100	50,685 63.13	3,760 4.68	25,839 32.18
25-34	297,477 100	181,600 61.05	115,877 38.95	181,600 100	140,055 77.12	6,523 3.59	35,022 19.29
35-44	263,338 100	148,383 56.35	114,954 43.65	148,383 100	135,283 91.17	5,359 3.61	7,742 5.22
45-54	177,253 100	92,415 52.14	84,838 47.86	92,415 100	85,305 92.31	3,950 4.27	3,160 3.42
55-64	124,179 100	49,707 40.03	74,471 59.97	49,707 100	47,179 94.91	469 0.94	2,059 4.14
65+	97,970 100	9,555 9.75	88,415 90.25	9,555 100	8,738 91.45	817 8.55	0 0
Total	1,362,710 100	561,945 41.24	800,765 58.76	561,945 100	467,245 83.15	20,878 3.72	73,822 13.14
Male							
15-24	214,323 100	61,833 28.85	152,490 71.15	61,833 100	44,018 71.19	3,760 6.08	14,055 22.73
25-34	149,153 100	129,842 87.05	19,311 12.95	129,842 100	110,328 84.97	6,089 4.69	13,426 10.34
35-44	123,807 100	119,033 96.14	4,773 3.86	119,033 100	107,937 90.68	4,808 4.04	6,288 5.28
45-54	83,966 100	74,040 88.18	9,926 11.82	74,040 100	67,932 91.75	3,803 5.14	2,305 3.11
55-64	59,524 100	41,432 69.61	18,092 30.39	41,432 100	38,904 93.9	469 1.13	2,059 4.97
65+	49,166 100	8,701 17.70	40,465 82.30	8,701 100	7,884 90.61	817 9.39	0 0
Total	679,938 100	434,882 63.96	245,057 36.04	434,882 100	377,002 86.69	19,746 4.54	38,133 8.77
Female							
15-24	188,171 100	18,451 9.81	169,720 90.19	18,451 100	6,667 36.13	0 0	11,784 63.87
25-34	148,324 100	51,758 34.89	96,566 65.11	51,758 100	29,728 57.44	434 0.84	21,596 41.73
35-44	139,531 100	29,350 21.03	110,181 78.97	29,350 100	27,346 93.17	550 1.88	1,454 4.95
45-54	93,287 100	18,375 19.70	74,912 80.30	18,375 100	17,373 94.55	147 0.80	855 4.65
55-64	64,655 100	8,275 12.80	56,380 87.20	8,275 100	8,275 100	0 0	0 0
65+	48,805 100	854 1.75	47,950 98.25	854 100	854 100	0 0	0 0
Total	682,772 100	127,063 18.61	555,709 81.39	127,063 100	90,243 71.02	1,131 0.89	35,689 28.09

Table 4) Distribution of Population Aged 15 Years and Above in Duhok Governorate by Sex, Age Group, Labor Force Status, Economically Being Active and Inactive, Number and Percentage - Second Half 2015

Sex and Age Group (Year)	Total	Active	Inactive	Total	Full Employment	Under Employment	Unemployed
Both Sex							
15-24	323,280 100	61,285 18.96	261,995 81.04	61,285 100	41,022 66.94	883 1.44	19,380 31.62
25-34	207,214 100	108,426 52.33	98,788 47.67	108,426 100	87,441 80.65	4,632 4.27	16,353 15.08
35-44	150,696 100	72,994 48.44	77,702 51.56	72,994 100	65,663 89.96	3,442 4.72	3,889 5.33
45-54	95,238 100	42,514 44.64	52,725 55.36	42,514 100	38,140 89.71	1,164 2.74	3,209 7.55
55-64	64,617 100	14,632 22.64	49,986 77.36	14,632 100	13,556 92.65	590 4.03	486 3.32
65+	44,811 100	1,679 3.75	43,131 96.25	1,679 100	1,575 93.80	0 0	104 6.20
Total	885,856 100	301,530 34.04	584,326 65.96	301,530 100	247,398 82.05	10,711 3.55	43,420 14.40
Male							
15-24	161,257 100	51,462 31.91	109,794 68.09	51,462 100	38,627 75.06	617 1.20	12,218 23.74
25-34	104,481 100	89,683 85.84	14,798 14.16	89,683 100	75,279 83.94	4,295 4.79	10,108 11.27
35-44	69,432 100	63,385 91.29	6,047 8.71	63,385 100	57,736 91.09	3,105 4.9	2,544 4.01
45-54	48,360 100	39,427 81.53	8,934 18.47	39,427 100	35,469 89.96	940 2.38	3,019 7.66
55-64	29,421 100	13,667 46.45	15,755 53.55	13,667 100	12,591 92.13	590 4.31	486 3.55
65+	20,148 100	1,679 8.34	18,468 91.66	1,679 100	1,575 93.80	0 0	104 6.20
Total	433,099 100	259,303 59.87	173,796 40.13	259,303 100	221,277 85.34	9,547 3.68	28,479 10.98
Female							
15-24	162,024 100	9,823 6.06	152,200 93.94	9,823 100	2,395 24.39	266 2.71	7,162 72.91
25-34	102,733 100	18,743 18.24	83,990 81.76	18,743 100	12,162 64.89	337 1.80	6,244 33.31
35-44	81,264 100	9,609 11.82	71,655 88.18	9,609 100	7,927 82.5	337 3.51	1,345 13.99
45-54	46,878 100	3,087 6.58	43,791 93.42	3,087 100	2,672 86.55	224 7.26	191 6.18
55-64	35,196 100	965 2.74	34,231 97.26	965 100	965 100	0 0	0 0
65+	24,663 100	0 0	24,663 100	0 0	0 0	0 0	0 0
Total	452,757 100	42,227 9.33	410,530 90.67	42,227 100	26,121 61.86	1,165 2.76	14,941 35.38

Table 5) Distribution of Population Aged 15 Years and Above in Kurdistan region by Education Level Sex, labor force Status, Economically Being Active and Inactive, Number and Percentage - Second Half 2015

Sex and Education Level	Total	Active	Inactive	Total	Full Employment	Under Employment	Unemployed
Both Sex							
Non/Less than Primary	1,498,101 100	456,319 30.46	1,041,782 69.54	456,319 100	398,889 87.41	26,028 5.70	31,401 6.88
Primary Completed	522,356 100	286,961 54.94	235,395 45.06	286,961 100	232,449 81.00	19,993 6.97	34,520 12.03
Intermediate or Basic	255,935 100	149,498 58.41	106,436 41.59	149,498 100	117,786 78.79	6,302 4.22	25,411 17.00
Secondary	163,772 100	112,509 68.70	51,264 31.30	112,509 100	78,931 70.16	6,355 5.65	27,223 24.20
Institute and above	381,318 100	331,469 86.93	49,849 13.07	331,469 100	244,727 73.83	18,615 5.62	68,127 20.55
Total	2,821,482 100	1,336,756 47.38	1,484,726 52.62	1,336,756 100	1,072,782 80.25	77,292 5.78	186,682 13.97
Male							
Non/Less than Primary	567,129 100	409,828 72.26	157,301 27.74	409,828 100	359,526 87.73	24,415 5.96	25,887 6.32
Primary Completed	318,635 100	267,684 84.01	50,950 15.99	267,684 100	220,217 82.27	19,506 7.29	27,962 10.45
Intermediate or Basic	147,133 100	124,318 84.49	22,815 15.51	124,318 100	104,172 83.79	5,275 4.24	14,871 11.96
Secondary	99,893 100	82,871 82.96	17,022 17.04	82,871 100	65,553 79.10	4,742 5.72	12,575 15.17
Institute and above	210,204 100	188,820 89.83	21,384 10.17	188,820 100	146,580 77.63	15,591 8.26	26,649 14.11
Total	1,342,994 100	1,073,521 79.93	269,472 20.07	1,073,521 100	896,048 83.47	69,529 6.48	107,944 10.06
Female							
Non/Less than Primary	930,972 100	46,491 4.99	884,481 95.01	46,491 100	39,364 84.67	1,613 3.47	5,515 11.86
Primary Completed	203,721 100	19,277 9.46	184,445 90.54	19,277 100	12,232 63.46	487 2.53	6,558 34.02
Intermediate or Basic	108,802 100	25,180 23.14	83,622 76.86	25,180 100	13,614 54.07	1,027 4.08	10,540 41.86
Secondary	63,879 100	29,638 46.40	34,242 53.60	29,638 100	13,378 45.14	1,612 5.44	14,648 49.42
Institute and above	171,113 100	142,649 83.36	28,465 16.64	142,649 100	98,147 68.80	3,024 2.12	41,478 29.08
Total	1,478,489 100	263,235 17.80	1,215,254 82.20	263,235 100	176,734 67.14	7,763 2.95	78,738 29.91

Table 6) Distribution of Population Aged 15 Years and Above in Erbil Governorate by Education Level Sex, Labor Force Status, Economically Being Active and Inactive, Number and Percentage - Second Half 2015

Sex and Education Level	Total	Active	Inactive	Total	Full Employment	Under Employment	Unemployed
Both Sex							
Non/Less than Primary	541,855 100	154,720 28.55	387,135 71.45	154,720 100	131,134 84.76	13,692 8.85	9,894 6.39
Primary Completed	208,062 100	115,672 55.59	92,390 44.41	115,672 100	86,058 74.40	13,239 11.45	16,375 14.16
Intermediate or Basic	110,460 100	65,800 59.57	44,660 40.43	65,800 100	47,531 72.24	4,363 6.63	13,906 21.13
Secondary	58,994 100	40,008 67.82	18,987 32.18	40,008 100	25,551 63.87	4,977 12.44	9,479 23.69
Institute and above	144,312 100	122,854 85.13	21,458 14.87	122,854 100	91,801 74.72	11,134 9.06	19,919 16.21
Total	1,063,683 100	499,053 46.92	564,630 53.08	499,053 100	382,075 76.56	47,406 9.50	69,572 13.94
Male							
Non/Less than Primary	189,214 100	137,087 72.45	52,127 27.55	137,087 100	117,695 85.85	12,402 9.05	6,990 5.10
Primary Completed	124,856 100	107,050 85.74	17,805 14.26	107,050 100	81,251 75.90	13,239 12.37	12,561 11.73
Intermediate or Basic	63,914 100	53,876 84.29	10,038 15.71	53,876 100	43,042 79.89	3,449 6.40	7,385 13.71
Secondary	36,958 100	31,290 84.66	5,668 15.34	31,290 100	22,052 70.48	3,365 10.76	5,872 18.77
Institute and above	83,777 100	73,520 87.76	10,257 12.24	73,520 100	55,492 75.48	9,372 12.75	8,656 11.77
Total	498,718 100	402,823 80.77	95,895 19.23	402,823 100	319,532 79.32	41,827 10.38	41,465 10.29
Female							
Non/Less than Primary	352,642 100	17,633 5.00	335,009 95.00	17,633 100	13,439 76.21	1,290 7.32	2,904 16.47
Primary Completed	83,206 100	8,621 10.36	74,585 89.64	8,621 100	4,807 55.76	0 0	3,814 44.24
Intermediate or Basic	46,545 100	11,924 25.62	34,622 74.38	11,924 100	4,489 37.65	914 7.67	6,520 54.69
Secondary	22,036 100	8,718 39.56	13,319 60.44	8,718 100	3,499 40.14	1,612 18.49	3,606 41.37
Institute and above	60,535 100	49,334 81.5	11,201 18.5	49,334 100	36,310 73.6	1,762 3.57	11,262 22.83
Total	564,965 100	96,230 17.03	468,735 82.97	96,230 100	62,544 64.99	5,579 5.80	28,107 29.21

Table7) Distribution of Population Aged 15 Years and Above in Sulaimani Governorate by Education Level Sex, Labor Force Status, Economically Being Active and Inactive, Number and Percentage - Second Half 2015

Sex and Education Level	Total	Active	Inactive	Total	Full Employment	Under Employment	Unemployed
Both Sex							
Non/Less than Primary	545,631 100	183,659 33.66	361,971 66.34	183,659 100	165,297 90.00	8,304 4.52	10,058 5.48
Primary Completed	212,702 100	117,592 55.28	95,110 44.72	117,592 100	100,691 85.63	4,815 4.09	12,086 10.28
Intermediate or Basic	88,633 100	54,148 61.09	34,486 38.91	54,148 100	46,661 86.17	1,336 2.47	6,150 11.36
Secondary	65,640 100	48,485 73.86	17,155 26.14	48,485 100	38,055 78.49	1,096 2.26	9,333 19.25
Institute and above	156,125 100	141,718 90.77	14,407 9.23	141,718 100	101,261 71.45	4,282 3.02	36,174 25.53
Total	1,068,730 100	545,601 51.05	523,129 48.95	545,601 100	451,965 82.84	19,834 3.64	73,802 13.53
Male							
Non/Less than Primary	213,429 100	158,216 74.13	55,213 25.87	158,216 100	141,708 89.57	8,094 5.12	8,414 5.32
Primary Completed	133,033 100	109,139 82.04	23,894 17.96	109,139 100	94,436 86.53	4,328 3.97	10,375 9.51
Intermediate or Basic	50,889 100	44,648 87.74	6,241 12.26	44,648 100	39,478 88.42	1,336 2.99	3,833 8.59
Secondary	42,360 100	35,125 82.92	7,235 17.08	35,125 100	30,915 88.01	1,096 3.12	3,114 8.87
Institute and above	78,722 100	72,881 92.58	5,841 7.42	72,881 100	56,656 77.74	3,848 5.28	12,377 16.98
Total	518,433 100	420,008 81.01	98,425 18.99	420,008 100	363,193 86.47	18,703 4.45	38,113 9.07
Female							
Non/Less than Primary	332,201 100	25,443 7.66	306,758 92.34	25,443 100	23,589 92.71	211 0.83	1,644 6.46
Primary Completed	79,668 100	8,453 10.61	71,215 89.39	8,453 100	6,255 73.99	487 5.76	1,711 20.25
Intermediate or Basic	37,745 100	9,500 25.17	28,244 74.83	9,500 100	7,183 75.61	0 0	2,317 24.39
Secondary	23,280 100	13,359 57.39	9,921 42.61	13,359 100	7,140 53.45	0 0	6,219 46.55
Institute and above	77,403 100	68,837 88.93	8,566 11.07	68,837 100	44,606 64.8	434 0.63	23,798 34.57
Total	550,297 100	125,593 22.82	424,704 77.18	125,593 100	88,773 70.68	1,131 0.90	35,689 28.42

Table 8) Distribution of Population Aged 15 Years and Above in Duhok Governorate by Education Level Sex, Labor Force Status, Economically Being Active and Inactive, Number and Percentage - Second Half 2015

Sex and Education Level	Total	Active	Inactive	Total	Full Employment	Under Employment	Unemployed
Both Sex							
Non/Less than Primary	410,616 100	117,940 28.72	292,676 71.28	117,940 100	102,459 86.87	4,032 3.42	11,449 9.71
Primary Completed	101,593 100	53,698 52.86	47,895 47.14	53,698 100	45,701 85.11	1,938 3.61	6,059 11.28
Intermediate or Basic	56,842 100	29,551 51.99	27,291 48.01	29,551 100	23,594 79.84	603 2.04	5,355 18.12
Secondary	39,138 100	24,016 61.36	15,122 38.64	24,016 100	15,324 63.81	281 1.17	8,411 35.02
Institute and above	80,881 100	66,897 82.71	13,984 17.29	66,897 100	51,664 77.23	3,199 4.78	12,034 17.99
Total	689,069 100	292,102 42.39	396,968 57.61	292,102 100	238,741 81.73	10,052 3.44	43,308 14.83
Male							
Non/Less than Primary	164,487 100	114,525 69.63	49,962 30.37	114,525 100	100,123 87.42	3,919 3.42	10,482 9.15
Primary Completed	60,746 100	51,496 84.77	9,250 15.23	51,496 100	44,531 86.47	1,938 3.76	5,027 9.76
Intermediate or Basic	32,329 100	25,794 79.79	6,535 20.21	25,794 100	21,652 83.94	490 1.90	3,652 14.16
Secondary	20,575 100	16,455 79.98	4,119 20.02	16,455 100	12,586 76.48	281 1.71	3,589 21.81
Institute and above	47,706 100	42,420 88.92	5,286 11.08	42,420 100	34,433 81.17	2,371 5.59	5,616 13.24
Total	325,843 100	250,690 76.94	75,153 23.06	250,690 100	213,324 85.09	8,999 3.59	28,367 11.32
Female							
Non/Less than Primary	246,129 100	3,415 1.39	242,714 98.61	3,415 100	2,336 68.39	112 3.29	967 28.32
Primary Completed	40,847 100	2,202 5.39	38,645 94.61	2,202 100	1,170 53.13	0 0	1,032 46.87
Intermediate or Basic	24,512 100	3,757 15.33	20,756 84.67	3,757 100	1,942 51.70	112 2.99	1,702 45.31
Secondary	18,563 100	7,561 40.73	11,002 59.27	7,561 100	2,739 36.22	0 0	4,822 63.78
Institute and above	33,175 100	24,477 73.78	8,698 26.22	24,477 100	17,231 70.4	828 3.38	6,418 26.22
Total	363,227 100	41,412 11.40	321,815 88.60	41,412 100	25,418 61.38	1,053 2.54	14,941 36.08

Table 9) Distribution of Population Aged 15 Years and Above in Kurdistan Region by Governorate, Sex, Economically Being Active and Inactive, Number and Percentage - Second Half 2015

Governorate	Total			Active			Inactive		
	Total	Female	Male	Total	Female	Male	Total	Female	Male
Erbil	1,297,142 100	673,927 51.95	623,215 48.05	518,810 100	98,141 18.92	420,669 81.08	778,331 100	575,786 73.98	202,545 26.02
Sulaymani	1,362,710 100	682,772 50.10	679,938 49.90	561,945 100	127,063 22.61	434,882 77.39	800,765 100	555,709 69.40	245,057 30.60
Duhok	885,856 100	452,757 51.11	433,099 48.89	301,530 100	42,227 14.00	259,303 86.00	584,326 100	410,530 70.26	173,796 29.74
Total	3,545,707 100	1,809,456 51.03	1,736,251 48.97	1,382,285 100	267,431 19.35	1,114,854 80.65	2,163,422 100	1,542,025 71.28	621,397 28.72

Table 10) Distribution of Population Aged 15 Years and Above in Erbil Governorate by District, Sex, Economically Being Active and Inactive, Number and Percentage - Second Half 2015

District	Total			Active			Inactive		
	Total	Female	Male	Total	Female	Male	Total	Female	Male
Erbil center	628,676 100	327,067 52.02	301,608 47.98	273,528 100	60,993 22.30	212,535 77.70	355,148 100	266,075 74.92	89,073 25.08
Deshti Hawler	134,192 100	67,899 50.60	66,292 49.40	55,846 100	10,245 18.35	45,601 81.65	78,346 100	57,654 73.59	20,691 26.41
Soran	122,545 100	62,216 50.77	60,329 49.23	45,891 100	7,167 15.62	38,725 84.38	76,653 100	55,049 71.82	21,604 28.18
Shaqlawā	84,180 100	44,416 52.76	39,764 47.24	28,510 100	4,652 16.32	23,859 83.68	55,670 100	39,764 71.43	15,906 28.57
Choman	22,987 100	11,627 50.58	11,359 49.42	8,079 100	1,396 17.28	6,683 82.72	14,908 100	10,231 68.63	4,677 31.37
Koye	69,434 100	36,397 52.42	33,037 47.58	28,137 100	7,139 25.37	20,998 74.63	41,296 100	29,257 70.85	12,039 29.15
Mergasur	36,885 100	19,401 52.60	17,484 47.4	14,033 100	2,914 20.77	11,119 79.23	22,852 100	16,487 72.15	6,365 27.85
Khabat	66,573 100	34,848 52.35	31,725 47.65	24,994 100	2,166 8.67	22,828 91.33	41,579 100	32,682 78.60	8,896 21.40
Rawenduz	13,809 100	6,887 49.88	6,921 50.12	4,355 100	506 11.63	3,849 88.37	9,453 100	6,381 67.50	3,072 32.50
Makhmur	117,861 100	63,168 53.59	54,694 46.41	35,435 100	963 2.72	34,473 97.28	82,426 100	62,205 75.47	20,221 24.53
Total	1,297,142 100	673,927 51.95	623,215 48.05	518,810 100	98,141 18.92	420,669 81.08	778,331 100	575,786 73.98	202,545 26.02

Table 11) Distribution of Population Aged 15 Years and Above in Sulaimani Governorate by, District, Sex, Economically Being Active and Inactive, Number and Percentage - Second Half 2015

District	Total			Active			Inactive		
	Total	Female	Male	Total	Female	Male	Total	Female	Male
Sulaymaniya center	578,368 100	286,263 49.49	292,105 50.51	251,697 100	67,184 26.69	184,513 73.31	326,671 100	219,079 67.06	107,592 32.94
Qaradakh	6,702 100	3,554 53.03	3,148 46.97	3,190 100	1,091 34.22	2,098 65.78	3,512 100	2,462 70.12	1,049 29.88
Sharezur	38,564 100	18,781 48.70	19,783 51.30	17,445 100	3,673 21.05	13,773 78.95	21,118 100	15,108 71.54	6,010 28.46
Sayid Sadiq	52,694 100	25,657 48.69	27,036 51.31	14,844 100	587 3.95	14,257 96.05	37,850 100	25,070 66.24	12,779 33.76
Halabja	72,633 100	36,325 50.01	36,309 49.99	31,171 100	7,833 25.13	23,339 74.87	41,462 100	28,492 68.72	12,970 31.28
Penjwin	26,752 100	13,090 48.93	13,662 51.07	12,645 100	2,415 19.1	10,230 80.90	14,107 100	10,675 75.68	3,431 24.32
Sharbajer	14,590 100	7,674 52.60	6,916 47.40	5,665 100	955 16.86	4,710 83.14	8,925 100	6,719 75.28	2,207 24.72
Mawat	7,483 100	3,722 49.73	3,762 50.27	2,701 100	580 21.48	2,121 78.52	4,782 100	3,141 65.69	1,641 34.31
Pishdar	78,219 100	39,984 51.12	38,235 48.88	36,236 100	10,121 27.93	26,115 72.07	41,983 100	29,863 71.13	12,120 28.87
Raniya	148,868 100	73,854 49.61	75,014 50.39	56,867 100	9,073 15.96	47,794 84.04	92,001 100	64,781 70.41	27,220 29.59
Dukan	43,674 100	22,334 51.14	21,340 48.86	16,366 100	2,984 18.23	13,382 81.77	27,307 100	19,350 70.86	7,957 29.14
Derbendikhan	30,215 100	15,562 51.50	14,653 48.50	12,110 100	2,483 20.50	9,628 79.50	18,105 100	13,079 72.24	5,026 27.76
Kalar	126,710 100	64,271 50.72	62,439 49.28	48,340 100	6,958 14.39	41,382 85.61	78,370 100	57,312 73.13	21,057 26.87
Kifri	33,900 100	17,223 50.81	16,677 49.19	11,619 100	1,572 13.53	10,047 86.47	22,281 100	15,651 70.25	6,630 29.75
Chamchamal	95,078 100	50,090 52.68	44,988 47.32	37,415 100	8,503 22.73	28,911 77.27	57,663 100	41,587 72.12	16,077 27.88
Khanaqin	8,261 100	4,388 53.13	3,872 46.88	3,632 100	1,051 28.93	2,581 71.07	4,628 100	3,337 72.11	1,291 27.89
Total	1,362,710 100	682,772 50.10	679,938 49.90	561,945 100	127,063 22.61	434,882 77.39	800,765 100	555,709 69.40	245,057 30.60

Table 12) Distribution of Population Aged 15 Years and Above in Duhok Governorate by District, Sex, Economically Being Active and Inactive, Number and Percentage - Second Half 2015

District	Total			Active			Inactive		
	Total	Female	Male	Total	Female	Male	Total	Female	Male
Duhok center	251,357	129,305	122,052	91,205	17,745	73,460	160,152	111,559	48,592
	100	51.44	48.56	100	19.46	80.54	100	69.66	30.34
Semel	117,755	60,082	57,674	38,407	4,183	34,224	79,349	55,899	23,450
	100	51.02	48.98	100	10.89	89.11	100	70.45	29.55
Zakho	164,410	84,747	79,662	52,389	5,701	46,688	112,021	79,046	32,974
	100	51.55	48.45	100	10.88	89.12	100	70.56	29.44
Amedi	104,590	52,949	51,641	38,439	9,921	28,518	66,151	43,028	23,123
	100	50.63	49.37	100	25.81	74.19	100	65.05	34.95
Shekhan	63,754	32,478	31,276	20,048	1,103	18,946	43,706	31,376	12,330
	100	50.94	49.06	100	5.50	94.50	100	71.79	28.21
Akre	109,680	56,562	53,118	33,461	2,013	31,448	76,219	54,549	21,670
	100	51.57	48.43	100	6.02	93.98	100	71.57	28.43
Bardarash	74,310	36,635	37,676	27,580	1,561	26,019	46,730	35,074	11,657
	100	49.30	50.70	100	5.66	94.34	100	75.06	24.94
Total	885,856	452,757	433,099	301,530	42,227	259,303	584,326	410,530	173,796
	100	51.11	48.89	100	14.00	86.00	100	70.26	29.74

Table 13) Distribution of Population Aged 15 Years and Above in Kurdistan Region by Governorate, Sex, labor force Status, Number and Percentage - Second Half 2015

Governorate	Total			Full Employment			Under Employment			Unemployed		
	Total	Female	Male	Total	Female	Male	Total	Female	Male	Total	Female	Male
Erbil	518,810	98,141	420,669	400,115	64,455	335,660	48,916	5,579	43,338	69,780	28,107	41,672
	100	18.92	81.08	100	16.11	83.89	100	11.4	88.6	100	40.28	59.72
Sulaymani	561,945	127,063	434,882	467,245	90,243	377,002	20,878	1,131	19,746	73,822	35,689	38,133
	100	22.61	77.39	100	19.31	80.69	100	5.42	94.58	100	48.34	51.66
Duhok	301,530	42,227	259,303	247,398	26,121	221,277	10,711	1,165	9,547	43,420	14,941	28,479
	100	14	86	100	10.56	89.44	100	10.87	89.13	100	34.41	65.59
Total	1,382,285	267,431	1,114,854	1,114,758	180,819	933,939	80,505	7,875	72,631	187,022	78,738	108,284
	100	19.35	80.65	100	16.22	83.78	100	9.78	90.22	100	42.1	57.9

Table 14) Distribution of Population Aged 15 Years and Above in Erbil Governorate by District, Sex, Labor Force Status, Number and Percentage - Second Half 2015

District	Total			Full Employment			Under Employment			Unemployed		
	Total	Female	Male	Total	Female	Male	Total	Female	Male	Total	Female	Male
Erbil center	273,528	60,993	212,535	203,334	40,707	162,627	31,772	4,299	27,473	38,422	15,986	22,435
	100	22.30	77.70	100	20.02	79.98	100	13.53	86.47	100	41.61	58.39
Deshti	55,846	10,245	45,601	37,566	5,022	32,544	7,031	603	6,428	11,250	4,620	6,629
Hawler	100	18.35	81.65	100	13.37	86.63	100	8.57	91.43	100	41.07	58.93
Soran	45,891	7,167	38,725	39,527	3,739	35,788	456	0	456	5,909	3,428	2,481
	100	15.62	84.38	100	9.46	90.54	100	0	100.00	100	58.01	41.99
Shaqlawa	28,510	4,652	23,859	22,808	3,151	19,657	3,451	600	2,851	2,251	900	1,350
	100	16.32	83.68	100	13.82	86.18	100	17.39	82.61	100	40.00	60.00
Choman	8,079	1,396	6,683	6,957	1,064	5,893	623	0	623	498	332	166
	100	17.28	82.72	100	15.29	84.71	100	0	100	100	66.67	33.33
Koye	28,137	7,139	20,998	25,338	5,879	19,458	0	0	0	2,800	1,260	1,540
	100	25.37	74.63	100	23.20	76.80	0	0	0	100	45.00	55.00
Mergasur	14,033	2,914	11,119	12,270	2,070	10,199	230	77	153	1,534	767	767
	100	20.77	79.23	100	16.88	83.13	100	33.33	66.67	100	50.00	50.00
Khabat	24,994	2,166	22,828	21,822	1,579	20,244	822	0	822	2,350	587	1,762
	100	8.67	91.33	100	7.23	92.77	100	0	100	100	25.00	75.00
Rawenduz	4,355	506	3,849	3,916	473	3,444	101	0	101	338	34	304
	100	11.63	88.37	100	12.07	87.93	100	0	100	100	10.00	90.00
Makhmur	35,435	963	34,473	26,577	770	25,806	4,429	0	4,429	4,429	193	4,237
	100	2.72	97.28	100	2.90	97.1	100	0	100	100	4.35	95.65
Total	518,810	98,141	420,669	400,115	64,455	335,660	48,916	5,579	43,338	69,780	28,107	41,672
	100	18.92	81.08	100	16.11	83.89	100	11.40	88.60	100	40.28	59.72

Table 15) Distribution of Population Aged 15 Years and Above in Sulaimani Governorate by District, Sex, Labor Force Status, Number and Percentage - Second Half 2015

District	Total			Full Employment			Under Employment			Unemployed		
	Total	Female	Male	Total	Female	Male	Total	Female	Male	Total	Female	Male
Sulaymaniya center	251,697	67,184	184,513	204,961	46,250	158,711	8,276	487	7,789	38,461	20,447	18,013
	100	26.69	73.31	100	22.57	77.43	100	5.88	94.12	100	53.16	46.84
Qaradakh	3,190	1,091	2,098	2,883	1,007	1,875	209	14	195	98	70	28
	100	34.22	65.78	100	34.95	65.05	100	6.68	93.32	100	71.43	28.57
Sharezur	17,445	3,673	13,773	12,604	2,838	9,766	2,671	83	2,588	2,170	751	1,419
	100	21.05	78.95	100	22.52	77.48	100	3.13	96.88	100	34.62	65.38
Sayid Sadiq	14,844	587	14,257	13,281	587	12,694	368	0	368	1,195	0	1,195
	100	3.95	96.05	100	4.42	95.58	100	0	100	100	0	100
Halabja	31,171	7,833	23,339	26,257	5,129	21,128	127	0	127	4,787	2,704	2,083
	100	25.13	74.87	100	19.53	80.47	100	0	100	100	56.48	43.52
Penjwin	12,645	2,415	10,230	10,358	2,097	8,261	1,461	127	1,334	826	191	635
	100	19.10	80.90	100	20.25	79.75	100	8.70	91.30	100	23.08	76.92
Sharbajer	5,665	955	4,710	5,237	823	4,413	0	0	0	428	132	296
	100	16.86	83.14	100	15.72	84.28	0	0	0	100	30.77	69.23
Mawat	2,701	580	2,121	2,361	460	1,901	40	0	40	300	120	180
	100	21.48	78.52	100	19.49	80.51	100	0	100	100	40.00	60.00
Pishdar	36,236	10,121	26,115	30,863	8,247	22,616	2,499	250	2,249	2,874	1,624	1,250
	100	27.93	72.07	100	26.72	73.28	100	10.00	90.00	100	56.52	43.48
Raniya	56,867	9,073	47,794	45,572	4,074	41,498	741	0	741	10,555	5,000	5,555
	100	15.96	84.04	100	8.94	91.06	100	0	100	100	47.37	52.63
Dukan	16,366	2,984	13,382	12,659	1,989	10,670	1,175	0	1,175	2,532	995	1,537
	100	18.23	81.77	100	15.71	84.29	100	0	100	100	39.29	60.71

Continued 15: Distribution of Population Aged 15 Years and Above in Sulaimani Governorate by District, Sex, Labor Force Status, Number and Percentage - Second Half 2015

District	Total			Full Employment			Under Employment			Unemployed		
	Total	Female	Male	Total	Female	Male	Total	Female	Male	Total	Female	Male
Derbendikhan	12,110 100	2,483 20.50	9,628 79.50	10,233 100	1,817 17.75	8,417 82.25	0 0	0 0	0 0	1,877 100	666 35.48	1,211 64.52
Kalar	48,340 100	6,958 14.39	41,382 85.61	43,030 100	5,676 13.19	37,354 86.81	1,099 100	0 0	1,099 100	4,211 100	1,282 30.43	2,930 69.57
Kifri	11,619 100	1,572 13.53	10,047 86.47	11,072 100	1,299 11.73	9,774 88.27	0 0	0 0	0 0	547 100	273 50.00	273 50.00
Chamchamal	37,415 100	8,503 22.73	28,911 77.27	32,483 100	6,973 21.47	25,510 78.53	2,211 100	170 8	2,041 92	2,721 100	1,361 50.00	1,361 50.00
Khanaqin	3,632 100	1,051 28.93	2,581 71.07	3,393 100	977 28.80	2,416 71.20	0 0	0 0	0 0	240 100	74 30.77	166 69.23
Total	561,945 100	127,063 22.61	434,882 77.39	467,245 100	90,243 19.31	377,002 80.69	20,878 100	1,131 5.42	19,746 94.58	73,822 100	35,689 48.34	38,133 51.66

Table 16) Distribution of Population Aged 15 Years and Above in Duhok Governorate by District, Sex, labor force Status, Number and Percentage - Second Half 2015

District	Total			Full Employment			Under Employment			Unemployed		
	Total	Female	Male	Total	Female	Male	Total	Female	Male	Total	Female	Male
Duhok center	91,205 100	17,745 19.46	73,460 80.54	77,849 100	12,403 15.93	65,446 84.07	191 100	0 0	191 100	13,166 100	5,343 40.58	7,823 59.42
Semel	38,407 100	4,183 10.89	34,224 89.11	27,759 100	1,901 6.85	25,858 93.15	1,648 100	0 0	1,648 100	9,000 100	2,282 25.35	6,718 74.65
Zakho	52,389 100	5,701 10.88	46,688 89.12	46,226 100	4,468 9.67	41,757 90.33	2,311 100	154 6.67	2,157 93.33	3,852 100	1,079 28.00	2,774 72.00
Amedi	38,439 100	9,921 25.81	28,518 74.19	24,726 100	3,964 16.03	20,762 83.97	3,485 100	787 22.58	2,698 77.42	10,229 100	5,171 50.55	5,058 49.45
Shekhan	20,048 100	1,103 5.50	18,946 94.50	19,748 100	1,002 5.08	18,745 94.92	0 0	0 0	0 0	301 100	100 33.33	200 66.67
Akre	33,461 100	2,013 6.02	31,448 93.98	29,443 100	1,342 4.56	28,101 95.44	2,348 100	224 9.52	2,125 90.48	1,670 100	447 26.79	1,222 73.21
Bardarash	27,580 100	1,561 5.66	26,019 94.34	21,648 100	1,041 4.81	20,607 95.19	729 100	0 0	729 100	5,204 100	520 10.00	4,683 90.00
Total	301,530 100	42,227 14.00	259,303 86.00	247,398 100	26,121 10.56	221,277 89.44	10,711 100	1,165 10.87	9,547 89.13	43,420 100	14,941 34.41	28,479 65.59

Table 17) Distribution of Economically Active Population Aged 15 Years and Above in Kurdistan Region by Sex, Marital Status, Age Groups, Number and Percentage - Second Half 2015

Sex and Marital Status	Age group						
	Total	65+	55-64	45-54	35-44	25-34	15-24
Both Sex							
Never Married	408,540 100	0 0	2,342 0.57	8,657 2.12	30,037 7.35	181,498 44.43	186,007 45.53
Currently Married	954,524 100	17,642 1.85	92,700 9.71	198,285 20.77	318,611 33.38	285,784 29.94	41,502 4.35
Others	19,222 100	1,257 6.54	5,310 27.63	4,340 22.58	3,594 18.7	3,885 20.21	836 4.35
Total	1,382,285 100	18,899 1.37	100,351 7.26	211,282 15.28	352,242 25.48	471,167 34.09	228,345 16.52
Male							
Never Married	301,584 100	0 0	336 0.11	2,964 0.98	15,575 5.16	130,061 43.13	152,648 50.62
Currently Married	805,388 100	17,039 2.12	82,203 10.21	169,967 21.1	276,761 34.36	225,720 28.03	33,698 4.18
Others	7,882 100	728 9.24	1,407 17.84	1,992 25.27	1,488 18.88	1,862 23.62	406 5.15
Total	1,114,854 100	17,767 1.59	83,946 7.53	174,923 15.69	293,824 26.36	357,643 32.08	186,752 16.75
Female							
Never Married	106,956 100	0 0	2,006 1.88	5,692 5.32	14,462 13.52	51,437 48.09	33,359 31.19
Currently Married	149,136 100	603 0.4	10,496 7.04	28,318 18.99	41,849 28.06	60,064 40.27	7,804 5.23
Others	11,340 100	529 4.66	3,903 34.42	2,349 20.71	2,106 18.57	2,023 17.84	430 3.79
Total	267,431 100	1,132 0.42	16,406 6.13	36,359 13.6	58,417 21.84	113,524 42.45	41,593 15.55

Table 18) Distribution of Economically Active Population Aged 15 Years and Above in Erbil Governorate by Sex, Marital Status, Age Groups, Number and Percentage - Second Half 2015

Sex and Marital Status	Age group						
	Total	65+	55-64	45-54	35-44	25-34	15-24
Both Sex							
Never Married	139,450 100	0 0	1,009 0.72	3,403 2.44	8,274 5.93	57,643 41.34	69,121 49.57
Currently Married	370,732 100	6,849 1.85	32,912 8.88	70,334 18.97	120,961 32.63	122,099 32.93	17,577 4.74
Others	8,628 100	815 9.45	2,091 24.23	2,617 30.33	1,630 18.89	1,399 16.21	77 0.89
Total	518,810 100	7,664 1.48	36,012 6.94	76,353 14.72	130,864 25.22	181,141 34.91	86,775 16.73
Male							
Never Married	104,715 100	0 0	182 0.17	1,136 1.08	3,147 3.00	42,187 40.29	58,064 55.45
Currently Married	313,303 100	6,849 2.19	28,582 9.12	59,548 19.01	107,722 34.38	95,209 30.39	15,392 4.91
Others	2,651 100	537 20.27	83 3.13	772 29.12	537 20.27	721 27.20	0 0
Total	420,669 100	7,387 1.76	28,847 6.86	61,456 14.61	111,406 26.48	138,117 32.83	73,457 17.46
Female							
Never Married	34,735 100	0 0	827 2.38	2,267 6.53	5,127 14.76	15,456 44.50	11,057 31.83
Currently Married	57,429 100	0 0	4,330 7.54	10,786 18.78	13,239 23.05	26,890 46.82	2,185 3.80
Others	5,977 100	278 4.64	2,008 33.59	1,845 30.86	1,093 18.28	677 11.33	77 1.28
Total	98,141 100	278 0.28	7,165 7.30	14,897 15.18	19,458 19.83	43,024 43.84	13,319 13.57

Table 19) Distribution of Economically Active Population Aged 15 Years and Above in Sulaimani Governorate by Sex, Marital Status, Age Groups, Number and Percentage - Second Half 2015

Sex and Marital Status	Age group						
	Total	65+	55-64	45-54	35-44	25-34	15-24
Both Sex							
Never Married	167,204 100	0 0	988 0.59	4,124 2.47	14,989 8.96	80,858 48.36	66,245 39.62
Currently Married	385,947 100	9,113 2.36	46,304 12.00	86,949 22.53	131,725 34.13	98,471 25.51	13,384 3.47
Others	8,794 100	442 5.02	2,416 27.47	1,342 15.26	1,669 18.98	2,270 25.81	655 7.45
Total	561,945 100	9,555 1.70	49,707 8.85	92,415 16.45	148,383 26.41	181,600 32.32	80,284 14.29
Male							
Never Married	118,116 100	0 0	0 0	1,538 1.30	8,671 7.34	56,265 47.64	51,641 43.72
Currently Married	312,618 100	8,510 2.72	40,594 12.99	71,664 22.92	109,412 35.00	72,548 23.21	9,890 3.16
Others	4,148 100	191 4.60	838 20.20	838 20.20	951 22.92	1,028 24.79	302 7.28
Total	434,882 100	8,701 2.00	41,432 9.53	74,040 17.03	119,033 27.37	129,842 29.86	61,833 14.22
Female							
Never Married	49,088 100	0 0	988 2.01	2,586 5.27	6,318 12.87	24,593 50.10	14,604 29.75
Currently Married	73,329 100	603 0.82	5,709 7.79	15,285 20.84	22,314 30.43	25,923 35.35	3,494 4.77
Others	4,646 100	251 5.40	1,578 33.96	504 10.85	718 15.46	1,242 26.72	353 7.60
Total	127,063 100	854 0.67	8,275 6.51	18,375 14.46	29,350 23.10	51,758 40.73	18,451 14.52

Table 20) Distribution of Economically Active Population Aged 15 Years and Above in Duhok Governorate by Sex, Marital Status, Age Groups, Number and Percentage - Second Half 2015

Sex and Marital Status	Age group						
	Total	65+	55-64	45-54	35-44	25-34	15-24
Both Sex							
Never Married	101,886 100	0 0	345 0.34	1,130 1.11	6,774 6.65	42,997 42.20	50,640 49.70
Currently Married	197,844 100	1,679 0.85	13,484 6.82	41,002 20.72	65,925 33.32	65,214 32.96	10,541 5.33
Others	1,800 100	0 0	803 44.63	382 21.20	295 16.38	216 12.00	104 5.78
Total	301,530 100	1,679 0.56	14,632 4.85	42,514 14.10	72,994 24.21	108,426 35.96	61,285 20.32
Male							
Never Married	78,753 100	0 0	154 0.20	291 0.37	3,757 4.77	31,609 40.14	42,942 54.53
Currently Married	179,467 100	1,679 0.94	13,027 7.26	38,754 21.59	59,628 33.23	57,963 32.30	8,416 4.69
Others	1,083 100	0 0	486 44.84	382 35.23	0 0	112 10.32	104 9.61
Total	259,303 100	1,679 0.65	13,667 5.27	39,427 15.2	63,385 24.44	89,683 34.59	51,462 19.85
Female							
Never Married	23,133 100	0 0	191 0.82	839 3.63	3,017 13.04	11,388 49.23	7,698 33.28
Currently Married	18,378 100	0 0	457 2.49	2,248 12.23	6,297 34.26	7,251 39.46	2,125 11.56
Others	717 100	0 0	318 44.32	0 0	295 41.15	104 14.53	0 0
Total	42,227 100	0 0	965 2.29	3,087 7.31	9,609 22.76	18,743 44.39	9,823 23.26

Table 21) Distribution of Economically Active Population Aged 15 Years and Above in Kurdistan Region by Sex, Education Level, Age Groups, Number and Percentage - Second Half 2015

Sex and Education Level	Age group						
	Total	65+	55-64	45-54	35-44	25-34	15-24
Both Sex							
Non/Less than Primary	456,319 100	13,893 3.04	55,014 12.06	71,105 15.58	132,017 28.93	121,929 26.72	62,362 13.67
Primary Completed	286,961 100	2,599 0.91	13,992 4.88	48,667 16.96	83,294 29.03	82,305 28.68	56,104 19.55
Intermediate or Basic	149,498 100	587 0.39	5,317 3.56	17,172 11.49	41,496 27.76	52,030 34.80	32,897 22.01
Secondary	112,509 100	1,283 1.14	8,439 7.50	20,958 18.63	26,019 23.13	35,133 31.23	20,676 18.38
Institute and above	331,469 100	537 0.16	17,345 5.23	51,342 15.49	64,389 19.43	161,467 48.71	36,389 10.98
Total	1,336,756 100	18,899 1.41	100,107 7.49	209,244 15.65	347,214 25.97	452,864 33.88	208,429 15.59
Male							
Non/Less than Primary	409,828 100	12,962 3.16	45,524 11.11	60,381 14.73	122,354 29.85	109,547 26.73	59,060 14.41
Primary Completed	267,684 100	2,398 0.90	13,683 5.11	46,096 17.22	77,319 28.88	77,059 28.79	51,131 19.10
Intermediate or Basic	124,318 100	587 0.47	4,719 3.80	14,895 11.98	31,344 25.21	45,017 36.21	27,756 22.33
Secondary	82,871 100	1,283 1.55	7,465 9.01	16,782 20.25	21,254 25.65	23,771 28.68	12,315 14.86
Institute and above	188,820 100	537 0.28	12,311 6.52	34,932 18.5	37,360 19.79	86,173 45.64	17,507 9.27
Total	1,073,521 100	17,767 1.65	83,702 7.80	173,086 16.12	289,631 26.98	341,567 31.82	167,769 15.63
Female							
Non/Less than Primary	46,491 100	931 2.00	9,490 20.41	10,724 23.07	9,663 20.78	12,381 26.63	3,302 7.10
Primary Completed	19,277 100	201 1.04	309 1.60	2,572 13.34	5,975 31.00	5,246 27.22	4,974 25.80
Intermediate or Basic	25,180 100	0 0	599 2.38	2,276 9.04	10,151 40.31	7,013 27.85	5,141 20.42
Secondary	29,638 100	0 0	974 3.29	4,176 14.09	4,765 16.08	11,362 38.34	8,361 28.21
Institute and above	142,649 100	0 0	5,034 3.53	16,410 11.50	27,029 18.95	75,293 52.78	18,882 13.24
Total	263,235 100	1,132 0.43	16,406 6.23	36,158 13.74	57,583 21.88	111,297 42.28	40,659 15.45

Table 22) Distribution of Economically Active Population Aged 15 Years and Above in Erbil Governorate by Sex, Education Level, Age Groups, Number and Percentage - Second Half 2015

Sex and Education Level	Age Groups						
	Total	65+	55-64	45-54	35-44	25-34	15-24
Both Sex							
Non/Less than Primary	154,720 100	4,224 2.73	16,296 10.53	22,627 14.62	45,438 29.37	47,093 30.44	19,043 12.31
Primary Completed	115,672 100	1,517 1.31	4,102 3.55	18,975 16.40	33,719 29.15	29,907 25.85	27,453 23.73
Intermediate or Basic	65,800 100	312 0.47	2,206 3.35	5,708 8.67	17,024 25.87	25,868 39.31	14,681 22.31
Secondary	40,008 100	1,075 2.69	2,937 7.34	5,994 14.98	10,530 26.32	11,050 27.62	8,422 21.05
Institute and above	122,854 100	537 0.44	10,437 8.50	21,774 17.72	21,351 17.38	59,442 48.38	9,313 7.58
Total	499,053 100	7,664 1.54	35,978 7.21	75,078 15.04	128,062 25.66	173,359 34.74	78,912 15.81
Male							
Non/Less than Primary	137,087 100	4,147 3.03	12,635 9.22	18,491 13.49	42,772 31.20	40,964 29.88	18,079 13.19
Primary Completed	107,050 100	1,316 1.23	3,962 3.70	17,068 15.94	31,874 29.77	28,617 26.73	24,214 22.62
Intermediate or Basic	53,876 100	312 0.58	2,206 4.10	4,565 8.47	11,743 21.80	23,266 43.18	11,784 21.87
Secondary	31,290 100	1,075 3.43	2,937 9.39	4,886 15.61	8,835 28.24	8,074 25.80	5,483 17.52
Institute and above	73,520 100	537 0.73	7,073 9.62	15,371 20.91	14,091 19.17	30,414 41.37	6,033 8.21
Total	402,823 100	7,387 1.83	28,813 7.15	60,381 14.99	109,315 27.14	131,335 32.60	65,593 16.28
Female							
Non/Less than Primary	17,633 100	77 0.43	3,661 20.76	4,137 23.46	2,666 15.12	6,129 34.76	963 5.46
Primary Completed	8,621 100	201 2.33	140 1.62	1,907 22.12	1,845 21.40	1,290 14.96	3,239 37.57
Intermediate or Basic	11,924 100	0 0	0 0	1,142 9.58	5,282 44.3	2,602 21.83	2,897 24.30
Secondary	8,718 100	0 0	0 0	1,109 12.72	1,694 19.44	2,976 34.13	2,939 33.71
Institute and above	49,334 100	0 0	3,364 6.82	6,402 12.98	7,260 14.72	29,028 58.84	3,280 6.65
Total	96,230 100	278 0.29	7,165 7.45	14,696 15.27	18,747 19.48	42,025 43.67	13,319 13.84

Table 23) Distribution of Economically Active Population Aged 15 Years and Above in Sulaimani Governorate by Sex, Education Level, Age Groups, Number and Percentage - Second Half 2015

Sex and Education Level	Age Groups						
	Total	65+	55-64	45-54	35-44	25-34	15-24
Both Sex							
Non/Less than Primary	183,659 100	8,352 4.55	30,244 16.47	31,006 16.88	55,405 30.17	41,275 22.47	17,377 9.46
Primary Completed	117,592 100	719 0.61	7,572 6.44	20,955 17.82	35,805 30.45	34,905 29.68	17,636 15.00
Intermediate or Basic	54,148 100	275 0.51	2,761 5.10	8,300 15.33	17,440 32.21	14,580 26.93	10,792 19.93
Secondary	48,485 100	208 0.43	5,045 10.41	12,256 25.28	10,909 22.5	14,016 28.91	6,050 12.48
Institute and above	141,718 100	0 0	4,002 2.82	19,327 13.64	27,665 19.52	71,156 50.21	19,568 13.81
Total	545,601 100	9,555 1.75	49,624 9.10	91,844 16.83	147,224 26.98	175,933 32.25	71,422 13.09
Male							
Non/Less than Primary	158,216 100	7,498 4.74	24,733 15.63	24,967 15.78	49,038 30.99	36,190 22.87	15,791 9.98
Primary Completed	109,139 100	719 0.66	7,403 6.78	20,391 18.68	31,978 29.30	32,003 29.32	16,645 15.25
Intermediate or Basic	44,648 100	275 0.62	2,274 5.09	7,167 16.05	13,916 31.17	11,977 26.83	9,039 20.25
Secondary	35,125 100	208 0.59	4,071 11.59	9,534 27.14	9,172 26.11	8,058 22.94	4,083 11.62
Institute and above	72,881 100	0 0	2,868 3.94	11,411 15.66	13,894 19.06	36,732 50.40	7,976 10.94
Total	420,008 100	8,701 2.07	41,349 9.84	73,469 17.49	117,997 28.09	124,958 29.75	53,535 12.75
Female							
Non/Less than Primary	25,443 100	854 3.36	5,511 21.66	6,039 23.73	6,368 25.03	5,086 19.99	1,585 6.23
Primary Completed	8,453 100	0 0	169 2.00	565 6.68	3,827 45.27	2,902 34.33	990 11.71
Intermediate or Basic	9,500 100	0 0	487 5.12	1,134 11.94	3,524 37.09	2,603 27.40	1,753 18.45
Secondary	13,359 100	0 0	974 7.29	2,722 20.38	1,737 13.00	5,958 44.60	1,968 14.73
Institute and above	68,837 100	0 0	1,134 1.65	7,916 11.50	13,771 20.01	34,425 50.01	11,592 16.84
Total	125,593 100	854 0.68	8,275 6.59	18,375 14.63	29,227 23.27	50,974 40.59	17,888 14.24

Table 24) Distribution of Economically Active Population Aged 15 Years and Above in Duhok Governorate by Sex, Education Level, Age Groups, Number and Percentage - Second Half 2015

Sex and Education Level	Age Groups						
	Total	65+	55-64	45-54	35-44	25-34	15-24
Both Sex							
Non/Less than Primary	117,940 100	1,317 1.12	8,474 7.18	17,472 14.81	31,173 26.43	33,561 28.46	25,942 22.00
Primary Completed	53,698 100	362 0.67	2,318 4.32	8,737 16.27	13,770 25.64	17,493 32.58	11,016 20.51
Intermediate or Basic	29,551 100	0 0	350 1.19	3,164 10.71	7,031 23.79	11,582 39.19	7,424 25.12
Secondary	24,016 100	0 0	457 1.90	2,708 11.28	4,580 19.07	10,067 41.92	6,204 25.83
Institute and above	66,897 100	0 0	2,905 4.34	10,242 15.31	15,374 22.98	30,868 46.14	7,508 11.22
Total	292,102 100	1,679 0.57	14,505 4.97	42,323 14.49	71,928 24.62	103,572 35.46	58,095 19.89
Male							
Non/Less than Primary	114,525 100	1,317 1.15	8,156 7.12	16,923 14.78	30,545 26.67	32,394 28.29	25,190 21.99
Primary Completed	51,496 100	362 0.70	2,318 4.50	8,637 16.77	13,467 26.15	16,439 31.92	10,271 19.95
Intermediate or Basic	25,794 100	0 0	239 0.92	3,164 12.26	5,685 22.04	9,774 37.89	6,933 26.88
Secondary	16,455 100	0 0	457 2.78	2,363 14.36	3,247 19.73	7,639 46.42	2,750 16.71
Institute and above	42,420 100	0 0	2,370 5.59	8,149 19.21	9,375 22.10	19,028 44.86	3,498 8.25
Total	250,690 100	1,679 0.67	13,540 5.40	39,236 15.65	62,319 24.86	85,274 34.02	48,641 19.4
Female							
Non/Less than Primary	3,415 100	0 0	318 9.30	549 16.08	629 18.41	1,167 34.16	753 22.04
Primary Completed	2,202 100	0 0	0 0	100 4.55	303 13.77	1,054 47.87	745 33.81
Intermediate or Basic	3,757 100	0 0	112 2.98	0 0	1,346 35.82	1,808 48.13	491 13.08
Secondary	7,561 100	0 0	0 0	345 4.56	1,333 17.63	2,428 32.12	3,455 45.69
Institute and above	24,477 100	0 0	536 2.19	2,092 8.55	5,998 24.51	11,841 48.37	4,010 16.38
Total	41,412 100	0 0	965 2.33	3,087 7.45	9,609 23.20	18,298 44.19	9,453 22.83

Table 25) Distribution of Population Aged 15 Years and Above in Kurdistan Region by Sex, class of workers, Number and Percentage - Second Half 2015

Sex and class of workers	Kurdistan Region	Duhok	Sulaimani	Erbil
Both Sex				
Paid worker (Employed)	848,071 70.96	198,781 77.01	317,667 65.09	331,623 73.86
Business owner	68,576 5.74	15,134 5.86	16,709 3.42	36,734 8.18
Self-employed	250,643 20.97	42,044 16.29	129,938 26.62	78,661 17.52
Unpaid worker in a family business or farm	27,371 2.29	2,150 0.83	23,392 4.79	1,829 0.41
Unpaid worker in a different business or voluntary work (not training)	504 0.04	0 0	354 0	150 0
trainee (Without Wage)	0 0	0 0	0 0	0 0
Total	1,195,166 100	258,110 100	488,059 100	448,997 100
Male				
Paid worker (Employed)	689,557 68.51	172,910 74.91	249,545 62.91	267,102 70.48
Business owner	67,819 6.74	14,656 6.35	16,709 4.21	36,454 9.62
Self-employed	235,670 23.42	41,107 17.81	120,546 30.39	74,016 19.53
Unpaid worker in a family business or farm	13,256 1.32	2,150 0.93	9,865 2.49	1,241 0.33
Unpaid worker in a different business or voluntary work (not training)	170 0.02	0 0	20 0.01	150 0.04
trainee (Without Wage)	0 0	0 0	0 0	0 0
Total	1,006,472 100	230,824 100	396,685 100	378,964 100
Female				
Paid worker (Employed)	158,514 84.01	25,872 94.82	68,121 74.55	64,521 92.13
Business owner	757 0.40	477 1.75	0 0	280 0.40
Self-employed	14,974 7.94	937 3.43	9,391 10.28	4,645 6.63
Unpaid worker in a family business or farm	14,115 7.48	0 0	13,528 14.80	587 0.84
Unpaid worker in a different business or voluntary work (not training)	334 0	0 0	334 0	0 0
trainee (Without Wage)	0 0	0 0	0 0	0 0
Total	188,694 100	27,286 100	91,374 100	70,034 100

Table 26) Distribution of worker Population Aged 15 Years and Above in Erbil Governorate by District, Sex, class of workers, Number and Percentage - Second Half 2015

Sex and District	Total	trainee (Without Wage)	Unpaid worker in a different business or voluntary work (not training)	Unpaid worker in a family business or farm	Self- employed	Business owner	Paid worker (Employed)
Both Sex							
Erbil center	235,106 100	0 0	0 0	0 0	47,693 20.29	22,571 9.60	164,842 70.11
Deshti Hawler	44,597 100	0 0	0 0	0 0	11,049 24.77	2,009 4.50	31,539 70.72
Soran	39,983 100	0 0	0 0	0 0	3,428 8.57	1,541 3.85	35,014 87.57
Shaqlawa	26,259 100	0 0	150 0.57	0 0	2,401 9.14	900 3.43	22,808 86.86
Choman	7,580 100	0 0	0 0	0 0	0 0	208 2.74	7,372 97.26
Koye	25,338 100	0 0	0 0	0 0	2,800 11.05	1,540 6.08	20,998 82.87
Mergasur	12,500 100	0 0	0 0	0 0	307 2.45	460 3.68	11,733 93.87
Khabat	22,645 100	0 0	0 0	1,410 6.23	2,535 11.19	4,934 21.79	13,766 60.79
Rawenduz	3,984 100	0 0	0 0	34 0.85	169 4.24	68 1.69	3,714 93.22
Makhmur	31,006 100	0 0	0 0	385 1.24	8,281 26.71	2,504 8.07	19,836 63.98
Total	448,997 100	0 0	150 0.03	1,829 0.41	78,661 17.52	36,734 8.18	331,623 73.86

Continued 26) Distribution of worker Population Aged 15 Years and Above in Erbil Governorate by District, Sex, class of workers, Number and Percentage - Second Half 2015

Sex and District	Total	trainee (Without Wage)	Unpaid worker in a different business or voluntary work (not training)	Unpaid worker in a family business or farm	Self- employed	Business owner	Paid worker (Employed)
Male							
Erbil center	190,100	0	0	0	45,343	22,571	122,186
	100	0	0	0	23.85	11.87	64.27
Deshti Hawler	38,972	0	0	0	10,245	2,009	26,718
	100	0	0	0	26.29	5.15	68.56
Soran	36,243	0	0	0	3,428	1,541	31,275
	100	0	0	0	9.46	4.25	86.29
Shaqlawā	22,508	0	150	0	2,101	900	19,357
	100	0	0.67	0	9.33	4.00	86.00
Choman	6,516	0	0	0	0	208	6,309
	100	0	0	0	0	3.19	96.81
Koye	19,458	0	0	0	2,380	1,260	15,819
	100	0	0	0	12.23	6.47	81.29
Mergasur	10,352	0	0	0	307	460	9,586
	100	0	0	0	2.96	4.44	92.59
Khabat	21,066	0	0	822	2,148	4,934	13,161
	100	0	0	3.90	10.20	23.42	62.47
Rawenduz	3,511	0	0	34	169	68	3,241
	100	0	0	0.96	4.81	1.92	92.31
Makhmur	30,236	0	0	385	7,896	2,504	19,451
	100	0	0	1.27	26.11	8.28	64.33
Total	378,964	0	150	1,241	74,016	36,454	267,102
	100	0.00	0.04	0.33	19.53	9.62	70.48

Continued 26) Distribution of worker Population Aged 15 Years and Above in Erbil Governorate by District, Sex, class of workers, Number and Percentage - Second Half 2015

Sex and District	Total	trainee (Without Wage)	Unpaid worker in a different business or voluntary work (not training)	Unpaid worker in a family business or farm	Self- employed	Business owner	Paid worker (Employed)
Female							
Erbil center	45,006 100	0 0	0 0	0 0	2,350 5.22	0 0	42,656 94.78
Deshti Hawler	5,625 100	0 0	0 0	0 0	804 14.29	0 0	4,821 85.71
Soran	3,739 100	0 0	0 0	0 0	0 0	0 0	3,739 100
Shaqlawā	3,751 100	0 0	0 0	0 0	300 8.00	0 0	3,451 92.00
Choman	1,064 100	0 0	0 0	0 0	0 0	0 0	1,064 100
Koye	5,879 100	0 0	0 0	0 0	420 7.14	280 4.76	5,180 88.10
Mergasur	2,147 100	0 0	0 0	0 0	0 0	0 0	2,147 100
Khabat	1,579 100	0 0	0 0	587 37.21	386 24.47	0 0	605 38.32
Rawenduz	473 100	0 0	0 0	0 0	0 0	0 0	473 100
Makhmur	770 100	0 0	0 0	0 0	385 50.00	0 0	385 50.00
Total	70,034 100	0 0	0 0	587 0.84	4,645 6.63	280 0.40	64,521 92.13

Table 27) Distribution of worker Population Aged 15 Years and Above in Sulaimani Governorate by District, Sex, class of workers, Number and Percentage - Second Half 2015

Sex and District	Total	trainee (Without Wage)	Unpaid worker in a different business or voluntary work (not training)	Unpaid worker in a family business or farm	Self- employed	Business owner	Paid worker (Employed)
Both Sex							
Sulaymaniya center	213,237 100	0 0	0 0	2,434 1.14	57,447 26.94	9,737 4.57	143,618 67.35
Qaradakh	3,092 100	0 0	0 0	1,119 36.20	392 12.67	56 1.81	1,525 49.31
Sharezur	15,275 100	0 0	334 2.19	1,669 10.93	4,507 29.51	250 1.64	8,514 55.74
Sayid Sadiq	13,649 100	0 0	0 0	0 0	3,260 23.88	1,103 8.08	9,285 68.03
Halabja	26,385 100	0 0	0 0	946 3.59	5,789 21.94	875 3.32	18,775 71.16
Penjwin	11,755 100	0 0	0 0	2,033 17.3	5,338 45.41	127 1.08	4,257 36.22
Sharbajer	5,237 100	0 0	0 0	99 1.89	1,778 33.96	132 2.52	3,228 61.64
Mawat	2,401 100	0 0	20 0.83	220 9.17	420 17.50	80 3.33	1,661 69.17
Pishdar	33,362 100	0 0	0 0	5,623 16.85	8,622 25.84	125 0.37	18,992 56.93
Raniya	46,313 100	0 0	0 0	0 0	10,390 22.43	370 0.80	35,553 76.77
Dukan	13,835 100	0 0	0 0	0 0	3,074 22.22	1,085 7.84	9,675 69.93

Continued 27) Distribution of worker Population Aged 15 Years and Above in Sulaimani Governorate by District, Sex, class of workers, Number and Percentage - Second Half 2015

Sex and District	Total	trainee (Without Wage)	Unpaid worker in a different business or voluntary work (not training)	Unpaid worker in a family business or farm	Self- employed	Business owner	Paid worker (Employed)
Derbendikhan	10,233 100	0 0	0 0	0 0	2,906 28.40	484 4.73	6,842 66.86
Kalar	44,129 100	0 0	0 0	183 0.41	12,085 27.39	2,197 4.98	29,663 67.22
Kifri	11,072 100	0 0	0 0	0 0	3,486 31.48	68 0.62	7,518 67.90
Chamchamal	34,693 100	0 0	0 0	8,843 25.49	8,673 25.00	0.00 0	17,177 49.51
Khanaqin	3,393 100	0 0	0 0	221 6.52	1,770 52.17	18 0.54	1,383 40.76
Total	488,059 100	0 0	354 0.07	23,392 4.79	129,938 26.62	16,709 3.42	317,667 65.09

Continued 27) Distribution of worker Population Aged 15 Years and Above in Sulaimani Governorate by District, Sex, class of workers, Number and Percentage - Second Half 2015

Sex and District	Total	trainee (Without Wage)	Unpaid worker in a different business or voluntary work (not training)	Unpaid worker in a family business or farm	Self- employed	Business owner	Paid worker (Employed)
Male							
Sulaymaniya center	166,500 100	0 0	0 0	2,434 1.46	55,013 33.04	9,737 5.85	99,316 59.65
Qaradakh	2,070 100	0 0	0 0	490 23.65	252 12.17	56 2.70	1,273 61.48
Sharezur	12,354 100	0 0	0 0	334 2.70	4,257 34.46	250 2.03	7,512 60.81
Sayid Sadiq	13,062 100	0 0	0 0	0 0	3,133 23.98	1,103 8.45	8,826 67.57
Halabja	21,256 100	0 0	0 0	406 1.91	5,121 24.09	875 4.12	14,854 69.88
Penjwin	9,531 100	0 0	0 0	890 9.33	4,448 46.67	127 1.33	4,067 42.67
Sharbajer	4,413 100	0 0	0 0	99 2.24	1,416 32.09	132 2.99	2,766 62.69
Mawat	1,941 100	0 0	20 1	180 9.28	300 15.46	80 4.12	1,361 70.1
Pishdar	24,865 100	0 0	0 0	1,374 5.53	6,872 27.64	125 0.50	16,493 66.33
Raniya	42,239 100	0 0	0 0	0 0	10,204 24.16	370 0.88	31,664 74.96
Dukan	11,845 100	0 0	0 0	0 0	2,803 23.66	1,085 9.16	7,957 67.18

Continued 27) Distribution of worker Population Aged 15 Years and Above in Sulaimani Governorate by District, Sex, class of workers, Number and Percentage - Second Half 2015

Sex and District	Total	trainee (Without Wage)	Unpaid worker in a different business or voluntary work (not training)	Unpaid worker in a family business or farm	Self- employed	Business owner	Paid worker (Employed)
Derbendikhan	8,417 100	0 0	0 0	0 0	2,604 30.94	484 5.76	5,328 63.31
Kalar	38,452 100	0 0	0 0	183 0.48	11,353 29.52	2,197 5.71	24,719 64.29
Kifri	9,774 100	0 0	0 0	0 0	3,349 34.27	68 0.70	6,356 65.03
Chamchamal	27,551 100	0 0	0 0	3,401 12.35	8,333 30.25	0.00 0	15,816 57.41
Khanaqin	2,416 100	0 0	0 0	74 3.05	1,088 45.04	18 0.76	1,235 51.15
Total	396,685 100	0 0	20 0.01	9,865 2.49	120,546 30.39	16,709 4.21	249,545 62.91

Continued 27) Distribution of worker Population Aged 15 Years and Above in Sulaimani Governorate by District, Sex, class of workers, Number and Percentage - Second Half 2015

Sex and District	Total	trainee (Without Wage)	Unpaid worker in a different business or voluntary work (not training)	Unpaid worker in a family business or farm	Self- employed	Business owner	Paid worker (Employed)
Female							
Sulaymaniya center	46,737 100	0 0	0 0	0 0	0 0	2,434 5.21	44,303 94.79
Qaradakh	1,021 100	0 0	0 0	0 0	630 61.64	140 13.70	252 24.66
Sharezur	2,921 100	0 0	0 0	334 11.43	1,336 45.71	250 8.57	1,002 34.29
Sayid Sadiq	587 100	0 0	0 0	0 0	0 0	127 21.66	460 78.34
Halabja	5,129 100	0 0	0 0	0 0	541 10.54	668 13.02	3,920 76.44
Penjwin	2,224 100	0 0	0 0	0 0	1,144 51.43	890 40.00	191 8.57
Sharbajer	823 100	0 0	0 0	0 0	0 0	362 44.00	461 56.00
Mawat	460 100	0 0	0 0	0 0	40 8.70	120 26.09	300 65.22
Pishdar	8,497 100	0 0	0 0	0 0	4,248 50.00	1,749 20.59	2,499 29.41
Raniya	4,074 100	0 0	0 0	0 0	0 0	185 4.55	3,889 95.45
Dukan	1,989 100	0 0	0 0	0 0	0 0	271 13.64	1,718 86.36

Continued 27) Distribution of worker Population Aged 15 Years and Above in Sulaimani Governorate by District, Sex, class of workers, Number and Percentage - Second Half 2015

Sex and District	Total	trainee (Without Wage)	Unpaid worker in a different business or voluntary work (not training)	Unpaid worker in a family business or farm	Self- employed	Business owner	Paid worker (Employed)
Derbendikhan	1,817 100	0 0	1,817 100	0 0	0 0	303 16.67	1,514 83.33
Kalar	5,676 100	0 0	5,676 100	0 0	0 0	732 12.90	4,944 87.10
Kifri	1,299 100	0 0	1,299 100	0 0	0 0	137 10.53	1,162 89.47
Chamchamal	7,143 100	0 0	7,143 100	0 0	5,442 76.19	340 4.76	1,361 19.05
Khanaqin	977 100	0 0	977 100	0 0	148 15.09	682 69.81	148 15.09
Total	91,374 100	0 0	91,374 100	334 0.37	13,528 14.80	9,391 10.28	68,121 74.55

Table 28) Distribution of worker Population Aged 15 Years and Above in Duhok Governorate by District, Sex, class of workers, Number and Percentage - Second Half 2015

Sex and District	Total	trainee (Without Wage)	Unpaid worker in a different business or voluntary work (not training)	Unpaid worker in a family business or farm	Self- employed	Business owner	Paid worker (Employed)
Both Sex							
Duhok center	78,040 100	0 0	0 0	0 0	8,586 11.00	5,152 6.60	64,301 82.4
Semel	29,407 100	0 0	0 0	127 0	5,831 19.83	2,789 9.48	20,661 70.26
Zakho	48,537 100	0 0	0 0	1,079 2.22	10,016 20.63	2,003 4.13	35,440 73.02
Amedi	28,210 100	0 0	0 0	112 0.40	2,356 8.35	112 0.40	25,629 90.85
Shekhan	19,748 100	0 0	0 0	0 0	3,809 19.29	200 1.02	15,738 79.70
Akre	31,792 100	0 0	0 0	0 0	4,785 15.05	2,900 9.12	24,107 75.83
Bardarash	22,376 100	0 0	0 0	833 3.72	6,661 29.77	1,977 8.84	12,905 57.67
Total	258,110 100	0 0	0 0	2,150 0.83	42,044 16.29	15,134 5.86	198,781 77.01

Continued 28) Distribution of worker Population Aged 15 Years and Above in Duhok Governorate by District, Sex, class of workers, Number and Percentage - Second Half 2015

Sex and District	Total	trainee (Without Wage)	Unpaid worker in a different business or voluntary work (not training)	Unpaid worker in a family business or farm	Self- employed	Business owner	Paid worker (Employed)
Male							
Duhok center	65,637 100	0 0	0 0	0 0	8,586 13.08	5,152 7.85	51,899 79.07
Semel	27,506 100	0 0	0 0	127 0	5,831 21.20	2,535 9.22	19,013 69.12
Zakho	43,915 100	0 0	0 0	1,079 2.46	9,399 21.40	2,003 4.56	31,434 71.58
Amedi	23,460 100	0 0	0 0	112 0.48	2,244 9.57	112 0.48	20,991 89.48
Shekhan	18,745 100	0 0	0 0	0 0	3,809 20.32	200 1.07	14,736 78.61
Akre	30,226 100	0 0	0 0	0 0	4,785 15.83	2,676 8.85	22,765 75.32
Bardarash	21,336 100	0 0	0 0	833 3.90	6,453 30.24	1,977 9.27	12,073 56.59
Total	230,824 100	0 0	0 0	2,150 0.93	41,107 17.81	14,656 6.35	172,910 74.91

Continued 28) Distribution of worker Population Aged 15 Years and Above in Duhok Governorate by District, Sex, class of workers, Number and Percentage - Second Half 2015

Sex and District	Total	trainee (Without Wage)	Unpaid worker in a different business or voluntary work (not training)	Unpaid worker in a family business or farm	Self- employed	Business owner	Paid worker (Employed)
Female							
Duhok center	12,403 100	0 0	0 0	0 0	0 0	0 0	12,403 100
Semel	1,901 100	0 0	0 0	0 0	0 0	254 13.33	1,648 86.67
Zakho	4,623 100	0 0	0 0	0 0	616 13.33	0 0.00	4,006 86.67
Amedi	4,750 100	0 0	0 0	0 0	112 2.37	0 0	4,638 97.63
Shekhan	1,002 100	0 0	0 0	0 0	0 0	0 0	1,002 100
Akre	1,565 100	0 0	0 0	0 0	0 0	224 14.29	1,342 85.71
Bardarash	1,041 100	0 0	0 0	0 0	208 20.00	0 0	833 80.00
Total	27,286 100	0 0	0 0	0 0	937 3.43	477 1.75	25,872 94.82

Table 29) Distribution of worker Population Aged 15 Years and Above in Kurdistan Region by Governorate, Sex, Reason of Absent at Work During the Reference Time, Number and Percentage - Second Half 2015

Sex and Absent Reason	Total	Duhok	Sulaymani	Erbil
Both Sex				
Strike or labor stop	1,042 4.32	0 0	247 1.54	795 12.04
Temporary lay-off	2,727 11.32	0 0	1,561 9.76	1,166 17.65
The work is seasonal	8,040 33.37	466 31.30	5,930 37.06	1,644 24.89
Bad weather or nature	127 0.53	0 0	127 0.79	0 0
Illness or injury	616 2.55	303 20.35	32 0.20	280 4.24
Leave or vacation/ a travel non related to the work	2,483 10.31	0 0	1,524 9.53	959 14.52
Lack of raw materials/ Shortage in budget/ lack of customers	595 2.47	0 0	394 2.46	201 3.04
Education or training Leave	1,907 7.92	0 0	1,226 7.66	682 10.32
Maternity or parental leave	4,914 20.39	720 48.35	3,316 20.72	878 13.30
Others	1,644 6.82	0 0	1,644 10.27	0 0
Total	24,096 100	1,490 100	16,000 100	6,605 100

Continued 29) Distribution of worker Population Aged 15 Years and Above in Kurdistan Region by Governorate, Sex, Reason of Absent at Work During the Reference Time, Number and Percentage - Second Half 2015

Sex and Absent Reason	Total	Duhok	Sulaymani	Erbil
Male				
Strike or labor stop	1,042 6.64	0 0	247 2.33	795 18.27
Temporary lay-off	2,560 16.31	0 0	1,394 13.18	1,166 26.79
The work is seasonal	6,723 42.82	466 60.60	4,965 46.93	1,292 29.68
Bad weather or nature	127 0.81	0 0	127 1.20	0 0
Illness or injury	476 3.03	303 39.40	32 0.31	140 3.22
Leave or vacation/ a travel non related to the work	627 3.99	0 0	550 5.20	77 1.76
Lack of raw materials/ Shortage in budget/ lack of customers	595 3.79	0 0	394 3.72	201 4.62
Education or training Leave	1,907 12.15	0 0	1,226 11.59	682 15.67
Maternity or parental leave	0 0	0 0	0 0	0 0
Others	1,644 10.47	0 0	1,644 15.54	0 0
Total	15,701 100	770 100	10,579 100	4,352 100
Female				
Strike or labor stop	0 0	0 0	0 0	0 0
Temporary lay-off	167 1.99	0 0	167 3.08	0 0
The work is seasonal	1,317 15.69	0 0	965 17.80	352 15.64
Bad weather or nature	0 0	0 0	0 0	0 0
Illness or injury	140 1.67	0 0	0 0	140 6.21
Leave or vacation/ a travel non related to the work	1,856 22.11	0 0	974 17.96	883 39.17
Lack of raw materials/ Shortage in budget/ lack of customers	0 0	0 0	0 0	0 0
Education or training Leave	0 0	0 0	0 0	0 0
Maternity or parental leave	4,914 58.54	720 100	3,316 61.16	878 38.98
Others	0 0	0 0	0 0	0 0
Total	8,395 100	720 100	5,421 100	2,253 100

Table 30) Distribution of Unemployed Aged 15 Years and Above in Kurdistan Region by Governorate, Sex, Education level, Number and Percentage - Second Half 2015

Governorate and Education Level	Total	Female	Male
Kurdistan Region			
Non/Less than Primary	31,401 16.82	5,515 7	25,887 23.98
Primary Completed	34,520 18.49	6,558 8.33	27,962 25.9
Intermediate or Basic	25,411 13.61	10,540 13.39	14,871 13.78
Secondary	27,223 14.58	14,648 18.6	12,575 11.65
Institute and above	68,127 36.49	41,478 52.68	26,649 24.69
Total	186,682 100	78,738 100	107,944 100
Erbil			
Non/Less than Primary	9,894 14.22	2,904 10.33	6,990 16.86
Primary Completed	16,375 23.54	3,814 13.57	12,561 30.29
Intermediate or Basic	13,906 19.99	6,520 23.2	7,385 17.81
Secondary	9,479 13.62	3,606 12.83	5,872 14.16
Institute and above	19,919 28.63	11,262 40.07	8,656 20.88
Total	69,572 100	28,107 100	41,465 100
Sulaymani			
Non/Less than Primary	10,058 13.63	1,644 4.61	8,414 22.08
Primary Completed	12,086 16.38	1,711 4.8	10,375 27.22
Intermediate or Basic	6,150 8.33	2,317 6.49	3,833 10.06
Secondary	9,333 12.65	6,219 17.43	3,114 8.17
Institute and above	36,174 49.02	23,798 66.68	12,377 32.47
Total	73,802 100	35,689 100	38,113 100
Duhok			
Non/Less than Primary	11,449 26.44	967 6.47	10,482 36.95
Primary Completed	6,059 13.99	1,032 6.91	5,027 17.72
Intermediate or Basic	5,355 12.36	1,702 11.39	3,652 12.88
Secondary	8,411 19.42	4,822 32.27	3,589 12.65
Institute and above	12,034 27.79	6,418 42.95	5,616 19.8
Total	43,308 100	14,941 100	28,367 100

Table 31) Distribution of Unemployed Population Aged 15 Years and Above in Kurdistan Region by Governorate, Age Group and Sex, Number and Percentage - Second Half 2015

Governorate and Age Groups	Total	Female	Male
Kurdistan Region			
15-24	73,675 39.39	28,734 36.49	44,941 41.5
25-34	80,192 42.88	40,984 52.05	39,208 36.21
35-44	19,554 10.46	7,236 9.19	12,318 11.38
45-54	8,872 4.74	1,784 2.27	7,088 6.55
55-64	3,938 2.11	0 0	3,938 3.64
65+	792 0.42	0 0	792 0.73
Total	187,022 100	78,738 100	108,284 100
Erbil			
15-24	28,455 40.78	9,788 34.82	18,667 44.80
25-34	28,818 41.30	13,144 46.76	15,674 37.61
35-44	7,923 11.35	4,438 15.79	3,486 8.36
45-54	2,503 3.59	738 2.63	1,764 4.23
55-64	1,393 2.00	0 0	1,393 3.34
65+	687 0.99	0 0	687 1.65
Total	69,780 100	28,107 100	41,672 100

Continued 31) Distribution of Unemployed Population Aged 15 Years and Above in Kurdistan Region by Governorate, Age Group and Sex, Number and Percentage - Second Half 2015

Governorate and Age Groups	Total	Female	Male
Sulaymani			
15-24	25,839 35.00	11,784 33.02	14,055 36.86
25-34	35,022 47.44	21,596 60.51	13,426 35.21
35-44	7,742 10.49	1,454 4.07	6,288 16.49
45-54	3,160 4.28	855 2.40	2,305 6.04
55-64	2,059 2.79	0 0	2,059 5.40
65+	0 0	0 0	0 0
Total	73,822 100	35,689 100	38,133 100
Duhok			
15-24	19,380 44.63	7,162 47.93	12,218 42.9
25-34	16,353 37.66	6,244 41.79	10,108 35.49
35-44	3,889 8.96	1,345 9.00	2,544 8.93
45-54	3,209 7.39	191 1.28	3,019 10.60
55-64	486 1.12	0 0	486 1.71
65+	104 0.24	0 0	104 0
Total	43,420 100	14,941 100	28,479 100

Table 32) Distribution of Unemployed Population Aged 15 Years and Above in Kurdistan Region by Governorate, Sex and the Ways Looking for Job, Number and Percentage - Second Half 2015

The Ways Seeking Job	Total	Female	Male
Kurdistan Region			
Registration with job-seeking agencies (such as a public employment service)	71,939 38.47	38,632 49.06	33,308 30.76
Visiting governmental institutions	36,684 19.61	21,333 27.09	15,351 14.18
Directly attending a workplace (factory, shop, facility)	32,210 17.22	4,492 5.71	27,718 25.60
Sending application to employers	16,453 8.80	5,290 6.72	11,163 10.31
Looking at advertisements in newspapers	4,595 2.46	1,702 2.16	2,893 2.67
Reply to newspaper advertisements	341 0.18	0 0	341 0.32
Looking at job advertisements in the internet	1,108 0.59	0 0	1,108 1.02
Respond to job advertisements in the internet	0 0	0 0	0 0
Asking relatives and friends to inform you about jobs	18,651 9.97	5,568 7.07	13,083 12.08
Asking relatives or friends to recommend you in a job	2,512 1.34	1,028 1.31	1,484 1.37
Taking a loan in order to start a business	425 0.23	0 0	425 0.39
Seeking land, buildings, equipment or machinery to start a business	1,024 0.55	0 0	1,024 0.95
Applying for a permit or license to start a business	0 0	0 0	0 0
Others	1,079 0.58	693 0.88	386 0.36
Total	187,022 100	78,738 100	108,284 100

Continued 32) Distribution of Unemployed Population Aged 15 Years and Above in Kurdistan Region by Governorate, Sex and the Ways Looking for Job, Number and Percentage - Second Half 2015

The Ways Seeking Job	Total	Female	Male
Erbil			
Registration with job-seeking agencies (such as a public employment service)	16,319 23.39	6,663 23.70	9,656 23.17
Visiting governmental institutions	14,105 20.21	9,415 33.50	4,690 11.25
Directly attending a workplace (factory, shop, facility)	11,694 16.76	2,508 8.92	9,186 22.04
Sending application to employers	12,447 17.84	4,500 16.01	7,947 19.07
Looking at advertisements in newspapers	2,687 3.85	537 1.91	2,150 5.16
Reply to newspaper advertisements	117 0	0 0	117 0
Look at job advertisements in the internet	1075 1.54	0 0	1075 3
Respond to job advertisements in the internet	0 0	0 0	0 0
Asking relatives and friends to inform you about jobs	9,165 13.13	3,253 11.57	5,912 14.19
Asking relatives or friends to recommend you in a job	537 0.77	537 1.91	0 0
Taking a loan in order to start a business	201 0.29	0 0	201 0.48
Seeking land, buildings, equipment or machinery to start a business	537 0.77	0 0	537 1.29
Applying for a permit or license to start a business	0 0	0 0	0 0
Others	894 1.28	693 2.46	201 0.48
Total	69,780 100	28,107 100	41,672 100

Continued 32) Distribution of Unemployed Population Aged 15 Years and Above in Kurdistan Region by Governorate, Sex and the Ways Looking for Job, Number and Percentage - Second Half 2015

The Ways Seeking Job	Total	Female	Male
Sulaimani			
Registration with job-seeking agencies (such as a public employment service)	31,025 42.03	22,486 63.01	8,539 22.39
Visiting governmental institutions	14,620 19.80	8,726 24.45	5,894 15.46
Directly attending a workplace (factory, shop, facility)	14,278 19.34	1,534 4.30	12,743 33.42
Sending application to employers	3,486 4.72	487 1.36	2,999 7.87
Looking at advertisements in newspapers	1,526 2.07	974 2.73	553 1.45
Reply to newspaper advertisements	33 0	0 0	33 0.09
Look at job advertisements in the internet	33 0	0 0	33 0.09
Respond to job advertisements in the internet	0 0	0 0	0 0
Asking relatives and friends to inform you about jobs	7,244 9.81	1,450 4.06	5,794 15.19
Asking relatives or friends to recommend you in a job	872 1.18	33 0.09	839 2.20
Taking a loan in order to start a business	33 0.04	0 0	33 0.09
Seeking land, buildings, equipment or machinery to start a business	487 0.66	0 0	487 1.28
Applying for a permit or license to start a business	0 0	0 0	0 0
Others	185 0.25	0 0	185 0
Total	73,822 100	35,689 100	38,133 100

Continued 32) Distribution of Unemployed Population Aged 15 Years and Above in Kurdistan Region by Governorate, Sex and the Ways Looking for Job, Number and Percentage - Second Half 2015

The Ways Seeking Job	Total	Female	Male
Duhok			
Registration with job-seeking agencies (such as a public employment service)	24,595 56.64	9,483 63.47	15,112 53.06
Visiting governmental institutions	7,960 18.33	3,192 21.36	4,768 16.74
Directly attending a workplace (factory, shop, facility)	6,238 14.37	450 3.01	5,788 20.32
Sending application to employers	520 1.20	303 2.03	216 0.76
Looking at advertisements in newspapers	382 0.88	191 1.28	191 0.67
Reply to newspaper advertisements	191 0.44	0 0	191 0.67
Look at job advertisements in the internet	0 0	0 0	0 0
Respond to job advertisements in the internet	0 0	0 0	0 0
Asking relatives and friends to inform you about jobs	2,243 5.16	865 5.79	1,377 4.84
Asking relatives or friends to recommend you in a job	1,103 2.54	457 3.06	645 2.27
Taking a loan in order to start a business	191 0	0 0	191 0.67
Seeking land, buildings, equipment or machinery to start a business	0 0	0 0	0 0
Applying for a permit or license to start a business	0 0	0 0	0 0
Others	0 0	0 0	0 0
Total	43,420 100	14,941 100	28,479 100

Table 33) Distribution of Employees Age 15 Years and Above in Kurdistan Region by Governorate, Sex, Work place, Number and Percentage - Second Half 2015

Workplace	Total	Female	Male
Kurdistan Region			
Offices	527,467 43.89	150,631 79.57	376,836 37.22
Family home	25,194 2.10	15,459 8.17	9,735 0.96
Others' home	3,094 0.26	1,138 0.60	1,956 0.19
Factory or Plant	35,997 3.00	1,734 0.92	34,264 3.38
Firm	67,466 5.61	11,374 6.01	56,092 5.54
Construction and Building	95,446 7.94	591 0.31	94,855 9.37
Shop, Market or Kiosk	185,608 15.44	5,984 3.16	179,624 17.74
Mobile in Various Places	118,952 9.90	42 0.02	118,910 11.75
Others	142,515 11.86	2,364 1.25	140,151 13.84
Total	1,201,739 100	189,315 100	1,012,424 100
Erbil			
Offices	198,925 44.02	59,601 85.10	139,324 36.49
Family home	8,490 1.88	3,447 4.92	5,043 1.32
Others' home	2,205 0.49	767 1.10	1,437 0.38
Factory or Plant	13,949 3.09	1,365 1.95	12,584 3.30
Firm	17,976 3.98	727 1.04	17,248 4.52
Construction and Building	35,199 7.79	0 0	35,199 9.22
Shop, Market or Kiosk	72,050 15.94	2,637 3.76	69,414 18.18
Mobile in Various Places	41,981 9.29	42 0.06	41,940 10.98
Others	61,117 13.52	1,447 2.07	59,670 15.63
Total	451,893 100	70,034 100	381,859 100

Continued 33) Distribution of Employees Age 15 Years and Above in Kurdistan Region by Governorate, Sex, Work place, Number and Percentage - Second Half 2015

Work place	Total	Female	Male
Sulaimani			
Offices	239,468 48.81	66,536 72.33	172,931 43.38
Family home	12,577 2.56	10,955 11.91	1,623 0.41
Others' home	778 0.16	370 0.40	407 0.10
Factory or Plant	14,530 2.96	61 0.07	14,469 3.63
Firm	39,341 8.02	10,647 11.57	28,694 7.20
Construction and Building	32,671 6.66	487 0.53	32,184 8.07
Shop, Market or Kiosk	81,362 16.58	2,940 3.20	78,422 19.67
Mobile in Various Places	58,688 11.96	0 0	58,688 14.72
Others	11,235 2.29	0 0	11,235 2.82
Total	490,650 100	91,996 100	398,654 100
Duhok			
Offices	89,074 34.37	24,493 89.77	64,581 27.85
Family home	4,126 1.59	1,057 3.87	3,069 1.32
Others' home	112 0.04	0 0	112 0.05
Factory or Plant	7,518 2.90	308 1.13	7,210 3.11
Firm	10,150 3.92	0 0	10,150 4.38
Construction and Building	27,575 10.64	104 0.38	27,471 11.85
Shop, Market or Kiosk	32,196 12.42	407 1.49	31,789 13.71
Mobile in Various Places	18,282 7.05	0 0	18,282 7.88
Others	70,162 27.07	916 3.36	69,246 29.86
Total	259,196 100	27,286 100	231,911 100

Table 34) Distribution of Employees age 15 Years and Above in Kurdistan Region by Governorate, Sex, Main Activity and activity area, Number and Percentage - Second Half 2015

Main Activity and activity area	Total	Female	Male
Kurdistan Region			
Agriculture, forestry and fishing	87,872 7.31	22,329 11.79	65,543 6.47
Mining and quarrying	10,811 0.90	1,994 1.05	8,817 0.87
Manufacturing	42,506 3.54	5,579 2.95	36,927 3.65
Electricity, gas, steam and air conditioning supply	22,644 1.88	3,089 1.63	19,555 1.93
Water supply, sewerage, and waste management and remediation activities	11,974 1.00	1,410 0.74	10,564 1.04
Construction	110,953 9.23	957 0.51	109,996 10.86
Wholesale and retail trade, repair of motor vehicles and motorcycles	144,147 11.99	3,582 1.89	140,564 13.88
Transportation and storage	88,660 7.38	168 0.09	88,492 8.74
Accommodation and food service activities	37,189 3.09	3,221 1.70	33,968 3.36
Information and communication	23,354 1.94	4,757 2.51	18,597 1.84
Financial and insurance activities	6,941 0.58	2,712 1.43	4,229 0.42
Real estate activities	3,586 0.30	312 0.16	3,275 0.32
Professional, scientific and technical activities	18,710 1.56	2,589 1.37	16,121 1.59
Administrative and support service activities	36,664 3.05	3,922 2.07	32,742 3.23
Public administration and defense, compulsory social security	317,400 26.41	27,616 14.59	289,784 28.62
Education	147,677 12.29	78,780 41.61	68,897 6.81
Human health and social work activities	41,071 3.42	15,691 8.29	25,379 2.51
Arts, entertainment and recreation	4,423 0.37	0 0	4,423 0.44
Other service activities	30,335 2.52	6,705 3.54	23,630 2.33
Activities of households as employers; undifferentiated goods- and services-producing activities of households for own use	8,442 0.70	2,049 1.08	6,394 0.63
Activities of extraterritorial organizations and bodies	2,554 0.21	622 0.33	1,932 0.19
Doesn't know	3,826 0.32	1,232 0.65	2,594 0.26
Total	1,201,739 100	189,315 100	1,012,424 100

Continued 34) Distribution of Employees age 15 Years and Above in Kurdistan Region by Governorate, Sex, Main Activity and activity area, Number and Percentage - Second Half 2015

Main Activity and activity area	Total	Female	Male
Erbil			
Agriculture, forestry and fishing	20,848 4.61	1,533 2.19	19,315 5.06
Mining and quarrying	6,885 1.52	1,365 1.95	5,520 1.45
Manufacturing	18,721 4.14	1,817 2.60	16,904 4.43
Electricity, gas, steam and air conditioning supply	11,809 2.61	1,569 2.24	10,240 2.68
Water supply, sewerage, and waste management and remediation activities	4,836 1.07	835 1.19	4,001 1.05
Construction	39,422 8.72	306 0.44	39,116 10.24
Wholesale and retail trade, repair of motor vehicles and motorcycles	46,349 10.26	1,867 2.67	44,481 11.65
Transportation and storage	38,343 8.48	42 0.06	38,301 10.03
Accommodation and food service activities	15,229 3.37	1,481 2.11	13,748 3.60
Information and communication	5,922 1.31	916 1.31	5,005 1.31
Financial and insurance activities	3,686 0.82	1,826 2.61	1,860 0.49
Real estate activities	1,396 0.31	312 0.44	1,084 0.28
Professional, scientific and technical activities	8,961 1.98	719 1.03	8,242 2.16
Administrative and support service activities	17,345 3.84	2,689 3.84	14,656 3.84
Public administration and defense, compulsory social security	112,144 24.82	9,023 12.88	103,121 27.00
Education	57,816 12.79	31,803 45.41	26,013 6.81
Human health and social work activities	19,611 4.34	6,970 9.95	12,641 3.31
Arts, entertainment and recreation	2,062 0.46	0 0	2,062 0.54
Other service activities	13,484 2.98	2,600 3.71	10,884 2.85
Activities of households as employers; undifferentiated goods- and services-producing activities of households for own use	4,094 0.91	1,285 1.84	2,809 0.74
Activities of extraterritorial organizations and bodies	1,116 0.25	0 0	1,116 0.29
Doesn't know	1,813 0.40	1,075 1.53	738 0.19
Total	451,893 100	70,034 100	381,859 100

Continued 34) Distribution of Employees age 15 Years and Above in Kurdistan Region by Governorate, Sex, Main Activity and activity area, Number and Percentage - Second Half 2015

Main Activity and Activity Area	Total	Female	Male
Sulaimani			
Agriculture, forestry and fishing	53,980 11.00	20,542 22.33	33,437 8.39
Mining and quarrying	1,692 0.34	135 0.15	1,556 0.39
Manufacturing	12,670 2.58	3,354 3.65	9,316 2.34
Electricity, gas, steam and air conditioning supply	7,902 1.61	1,026 1.11	6,877 1.72
Water supply, sewerage, and waste management and remediation activities	4,715 0.96	575 0.63	4,140 1.04
Construction	40,372 8.23	547 0.60	39,824 9.99
Wholesale and retail trade, repair of motor vehicles and motorcycles	69,619 14.19	1,499 1.63	68,120 17.09
Transportation and storage	35,926 7.32	0 0	35,926 9.01
Accommodation and food service activities	16,935 3.45	1,627 1.77	15,308 3.84
Information and communication	10,525 2.15	3,459 3.76	7,066 1.77
Financial and insurance activities	1,997 0.41	504 0.55	1,493 0.37
Real estate activities	874 0.18	0 0	874 0.22
Professional, scientific and technical activities	8,625 1.76	1,679 1.83	6,946 1.74
Administrative and support service activities	12,590 2.57	1,042 1.13	11,548 2.90
Public administration and defense, compulsory social security	119,717 24.4	12,156 13.21	107,561 27.0
Education	59,333 12.09	32,606 35.44	26,726 6.7
Human health and social work activities	15,554 3.17	6,619 7.20	8,935 2.24
Arts, entertainment and recreation	1,497 0.31	0 0	1,497 0.38
Other service activities	13,322 2.72	3,698 4.02	9,625 2.41
Activities of households as employers; undifferentiated goods- and services-producing activities of households for own use	1,723 0.35	147 0.16	1,576 0.40
Activities of extraterritorial organizations and bodies	642 0.13	622 0.68	20 0.01
Doesn't know	440 0	157 0	282 0.07
Total	490,650 100	91,996 100	398,654 100

Continued 34) Distribution of Employees age 15 Years and Above in Kurdistan Region by Governorate, Sex, Main Activity and activity area, Number and Percentage - Second Half 2015

Main Activity and Activity Area	Total	Female	Male
Duhok			
Agriculture, forestry and fishing	13,044 5.03	254 0.93	12,790 5.52
Mining and quarrying	2,235 0.86	494 1.81	1,741 0.75
Manufacturing	11,114 4.29	407 1.49	10,707 4.62
Electricity, gas, steam and air conditioning supply	2,933 1.13	494 1.81	2,439 1.05
Water supply, sewerage, and waste management and remediation activities	2,423 0.93	0 0	2,423 1.04
Construction	31,160 12.02	104 0.38	31,056 13.39
Wholesale and retail trade, repair of motor vehicles and motorcycles	28,179 10.87	216 0.79	27,963 12.06
Transportation and storage	14,391 5.55	127 0.46	14,265 6.15
Accommodation and food service activities	5,024 1.94	112 0.41	4,912 2.12
Information and communication	6,908 2.67	382 1.40	6,526 2.81
Financial and insurance activities	1,257 0.49	382 1.40	876 0.38
Real estate activities	1,316 0.51	0 0	1,316 0.57
Professional, scientific and technical activities	1,124 0.43	191 0.70	933 0.4
Administrative and support service activities	6,728 2.60	191 0.70	6,538 2.82
Public administration and defense, compulsory social security	85,539 33.00	6,437 23.59	79,102 34.11
Education	30,529 11.78	14,371 52.7	16,158 6.97
Human health and social work activities	5,905 2.28	2,102 7.70	3,803 1.64
Arts, entertainment and recreation	863 0.33	0 0	863 0.37
Other service activities	3,528 1.36	407 1.49	3,121 1.35
Activities of households as employers; undifferentiated goods- and services-producing activities of households for own use	2,626 1.01	616 2.26	2,009 0.87
Activities of extraterritorial organizations and bodies	796 0.31	0 0	796 0.34
Doesn't know	1,573 0.61	0 0	1,573 0.68
Total	259,196 100	27,286 100	231,911 100

Table 35) Distribution of Employees Age 15 Years and Above in Kurdistan Region by Governorate, Sex and Job Sector, Number and Percentage - Second Half 2015

Job Sector	Total	Female	Male
Kurdistan Region			
Government	605,101 50.35	143,560 75.83	461,542 45.59
State owned enterprise	6,845 0.57	267 0.14	6,578 0.65
Mixed (Private-Public) (publicly owned but privately managed)	19,310 1.61	1,482 0.78	17,828 1.76
Private	557,022 46.35	42,078 22.2	514,944 50.86
Kurdish or Iraqi NGO	3,762 0.31	820 0.43	2,942 0.29
Foreign private	4,571 0.38	1,075 0.57	3,496 0.35
Foreign government/Foreign NGO	921 0.08	0 0	921 0.09
Doesn't know	4,206 0.35	34 0.02	4,172 0.41
Total	1,201,739 100	189,315 100	1,012,424 100
Erbil			
Government	235,761 52.17	56,381 80.5	179,380 46.98
State owned enterprise	4,799 1.06	140 0.20	4,659 1.22
Mixed (Private-Public) (publicly owned but privately managed)	9,887 2.19	1,416 2.02	8,471 2.22
Private	191,521 42.38	10,506 15.0	181,015 47.4
Kurdish or Iraqi NGO	1,829 0.40	517 0.74	1,312 0.34
Foreign private	4,417 0.98	1,075 1.53	3,342 0.88
Foreign government/Foreign NGO	738 0.16	0 0	738 0.19
Doesn't know	2,941 0.66	0 0	2,941 0.77
Total	451,893 100	70,034 100	381,859 100

Continued 35) Distribution of Employees Age 15 Years and Above in Kurdistan Region by Governorate, Sex and Job Sector, Number and Percentage - Second Half 2015

Job Sector	Total	Female	Male
Sulaimani			
Government	230,469 46.97	62,106 67.51	168,363 42.23
State owned enterprise	678 0.14	127 0.14	551 0.14
Mixed (Private-Public) (publicly owned but privately managed)	6,767 1.38	66 0	6,701 1.68
Private	251,996 51.36	29,663 32.24	222,334 55.77
Kurdish or Iraqi NGO	441 0.09	0 0	441 0.11
Foreign private	0 0	0 0	0 0
Foreign government/Foreign NGO	183 0.04	0 0	183 0.05
Doesn't know	114 0.02	34 0	80 0.02
Total	490,650 100	91,996 100	398,654 100
Duhok			
Government	138,872 53.58	25,073 91.89	113,799 49.07
State owned enterprise	1,368 0.53	0 0	1,368 0.59
Mixed (Private-Public) (publicly owned but privately managed)	2,656 1.02	0 0	2,656 1.15
Private	113,505 43.79	1,909 7.00	111,595 48.12
Kurdish or Iraqi NGO	1,491 0.58	303 1.11	1,188 0.51
Foreign private	154 0.06	0 0	154 0.07
Foreign government/Foreign NGO	0 0	0 0	0 0
Doesn't know	1,151 0.44	0 0	1,151 0.50
Total	259,196 100	27,286 100	231,911 100

Table36) Distribution of Employees Age 15 Years and Above in Kurdistan Region by Governorate, Main Occupation, Sex, Number and Percentage - Second Half 2015

Main Occupation	Total	Female	Male
Kurdistan Region			
Managers	30,032 2.50	2,447 1.29	27,585 2.72
Professionals	148,900 12.39	63,961 33.79	84,939 8.39
Technicians and associate professionals	34,155 2.84	9,542 5.04	24,613 2.43
Clerical support workers	153,381 12.76	56,817 30.01	96,564 9.54
Service and sales workers	259,734 21.61	15,056 7.95	244,679 24.17
Skilled agricultural, forestry and fishery workers	77,843 6.48	20,286 10.72	57,557 5.69
Craft and related trades workers	118,425 9.85	4,801 2.54	113,624 11.22
apparatus and machine operators, assemblers	36,814 3.06	77 0.04	36,738 3.63
Elementary occupations	138,766 11.55	14,241 7.52	124,525 12.30
Armed forces occupations	203,487 16.93	1,984 1.05	201,503 19.90
Doesn't know	201 0.02	104 0.05	97 0.01
Total	1,201,739 100	189,315 100	1,012,424 100
Erbil			
Managers	13,546 3.00	477 0.68	13,069 3.42
Professionals	72,015 15.94	31,046 44.33	40,969 10.73
Technicians and associate professionals	4,329 0.96	140 0.20	4,189 1.10
Clerical support workers	63,820 14.12	20,324 29.02	43,497 11.39
Service and sales workers	77,703 17.19	7,054 10.07	70,648 18.50
Skilled agricultural, forestry and fishery workers	19,908 4.41	1,176 1.68	18,731 4.91
Craft and related trades workers	60,708 13.43	1,979 2.83	58,729 15.38
apparatus and machine operators, assemblers	5,265 1.17	77 0.11	5,189 1.36
Elementary occupations	45,079 9.98	6,746 9.63	38,333 10.04
Armed forces occupations	89,487 19.80	1,015 1.45	88,472 23.17
Doesn't know	34 0.01	0 0.00	34 0.01
Total	451,893 100	70,034 100	381,859 100

Continued 36) Distribution of Employees Age 15 Years and Above in Kurdistan Region by Governorate, Main Occupation, Sex, Number and Percentage - Second Half 2015

Main Occupation	Total	Female	Male
Sulaimani			
Managers	10,225 2.08	1,540 1.67	8,684 2.18
Professionals	66,981 13.65	29,999 32.61	36,982 9.28
Technicians and associate professionals	25,579 5.21	8,718 9.48	16,861 4.23
Clerical support workers	29,794 6.07	16,764 18.22	13,030 3.27
Service and sales workers	135,044 27.52	7,074 7.69	127,969 32.10
Skilled agricultural, forestry and fishery workers	45,232 9.22	18,997 20.65	26,235 6.58
Craft and related trades workers	42,566 8.68	2,710 2.95	39,856 10
apparatus and machine operators, assemblers	28,793 5.87	0 0	28,793 7.22
Elementary occupations	53,675 10.94	6,140 6.67	47,535 11.92
Armed forces occupations	52,698 10.74	53 0.06	52,645 13.21
Doesn't know	64 0.01	0 0	64 0.02
Total	490,650 100	91,996 100	398,654 100
Duhok			
Managers	6,261 2.42	429 1.57	5,832 2.51
Professionals	9,904 3.82	2,916 10.69	6,988 3.01
Technicians and associate professionals	4,248 1.64	684 2.51	3,564 1.54
Clerical support workers	59,766 23.06	19,729 72.30	40,037 17.26
Service and sales workers	46,988 18.13	927 3.40	46,061 19.86
Skilled agricultural, forestry and fishery workers	12,703 4.90	112 0.41	12,590 5.43
Craft and related trades workers	15,151 5.85	112 0.41	15,039 6.48
apparatus and machine operators, assemblers	2,756 1.06	0 0.00	2,756 1.19
Elementary occupations	40,013 15.4	1,356 4.97	38,658 16.7
Armed forces occupations	61,302 23.65	916 3.36	60,386 26.04
Doesn't know	104 0.04	104 0.38	0 0
Total	259,196 100	27,286 100	231,911 100

Table37) Distribution of Employees Age 15 Years and Above in Kurdistan Region by Governorate, Nature of Employment, Sex, Number and Percentage - Second Half 2015

Nature of Employment	Total	Female	Male
Kurdistan Region			
Permanent	1,023,438 85.16	172,827 91.29	850,611 84.02
Temporary (Fixed term; e.g. a two-month job might not return to it)	83,112 6.92	10,271 5.43	72,841 7.19
Seasonal (Expected to return to it)	36,380 3.03	2,953 1.56	33,427 3.30
Casual (for a few days)	50,665 4.22	2,503 1.32	48,162 4.76
Task-Based	8,046 0.67	761 0.40	7,285 0.72
Doesn't know	97 0.01	0 0	97 0.01
Total	1,201,739 100	189,315 100	1,012,424 100
Erbil			
Permanent	372,466 82.42	63,328 90.42	309,138 80.96
Temporary (Fixed term; e.g. a two-month job might not return to it)	47,600 10.53	4,582 6.54	43,018 11.27
Seasonal (Expected to return to it)	12,387 2.74	629 0.90	11,758 3.08
Casual (for a few days)	16,484 3.65	1,495 2.13	14,990 3.93
Task-Based	2,922 0.65	0 0	2,922 0.77
Doesn't know	34 0	0 0	34 0
Total	451,893 100	70,034 100	381,859 100

Continued 37) Distribution of Employees Age 15 Years and Above in Kurdistan Region by Governorate, Nature of Employment, Sex, Number and Percentage - Second Half 2015

Nature of Employment	Total	Female	Male
Sulaymani			
Permanent	435,258 88.71	83,249 90.49	352,009 88.3
Temporary (Fixed term; e.g. a two-month job might not return to it)	32,861 6.70	5,689 6.18	27,171 6.82
Seasonal (Expected to return to it)	14,365 2.93	2,212 2.40	12,153 3.05
Casual (for a few days)	3,988 0.81	188 0	3,800 0.95
Task-Based	4,114 0.84	657 0.71	3,457 0.87
Doesn't know	64 0	0 0	64 0
Total	490,650 100	91,996 100	398,654 100
Duhok			
Permanent	215,715 83.22	26,250 96.2	189,465 81.7
Temporary (Fixed term; e.g. a two-month job might not return to it)	2,651 1.02	0 0	2,651 1.14
Seasonal (Expected to return to it)	9,628 3.71	112 0.41	9,516 4.10
Casual (for a few days)	30,193 11.65	820 3.00	29,373 12.67
Task-Based	1,010 0.39	104 0	906 0.39
Doesn't know	0 0	0 0	0 0
Total	259,196 100	27,286 100	231,911 100

Table 38) Distribution of Employees Aged 15 Years and Above in Kurdistan Region by Governorate, Monthly Income Groups, Job Sector, Number and Percentage- Second Half 2015

Location and Monthly Income Groups (IQD)	Job Sector								
	Total	Unknown	Foreign government/ Foreign NGO	Foreign private	Kurdish or Iraqi NGO	Private	Mixed (Private- Public)	State owned enterprise	Government
Kurdistan Region									
Less Than 250,000	92,633 7.73	179 4.27	0 0	537 11.76	112 2.99	86,612 15.64	487 2.52	802 11.72	3,903 0.65
250,000- Less Than 500,000	238,693 19.93	150 3.56	0 0	1,075 23.51	1,327 35.28	162,372 29.33	3,103 16.07	1,011 14.77	69,655 11.52
500,000- Less Than 750,000	386,881 32.30	2,080 49.45	201 21.8	1,884 41.21	1,752 46.58	163,620 29.55	7,548 39.09	2,253 32.91	207,544 34.33
750,000- Less Than 1,000,000	195,941 16.36	1,460 34.71	183 19.87	537 11.76	244 6.49	52,427 9.47	2,239 11.59	1,590 23.23	137,261 22.71
1,000,000- Less Than 1,500,000	209,161 17.46	0 0	0 0	537 11.76	0 0	54,074 9.77	3,643 18.87	842 12.31	150,064 24.83
1,500,000- Less Than 2,000,000	37,944 3.17	0 0	537 58.32	0 0	135 3.59	11,074 2.00	1,562 8.09	191 2.79	24,445 4.04
2,000,000- Less Than 3,000,000	22,125 1.85	0 0	0 0	0 0	191 5.07	14,006 2.53	728 3.77	156 2.28	7,045 1.17
3,000,000- Less Than 5,000,000	7,351 0.61	0 0	0 0	0 0	0 0	5,508 0.99	0 0	0 0	1,843 0.30
5,000,000 and more	6,980 0.58	337 8.02	0 0	0 0	0 0	3,919 0.71	0 0	0 0	2,723 0.45
Total	1,197,710 100	4,206 100	921 100	4,571 100	3762 100	553,612 100	19,310 100	6,845 100	604,483 100

Continued 38) Distribution of Employees Aged 15 Years and Above in Kurdistan Region by Governorate, Monthly Income Groups, Job Sector, Number and Percentage-
Second Half 2015

Location and Monthly Income Groups (IQD)	Job Sector								
	Total	Unknown	Foreign government/ Foreign NGO	Foreign private	Kurdish or Iraqi NGO	Private	Mixed (Private-Public)	State owned enterprise	Government
Erbil									
Less Than 250,000	35,322 7.82	117 3.99	0 0	537 12.17	0 0	31,964 16.7	0 0	352 7.34	2,350 1.00
250,000- Less Than 500,000	76,533 16.94	117 3.99	0 0	1075 24.34	773 42.24	45,822 23.93	631 6.38	385 8.02	27,730 11.77
500,000- Less Than 750,000	145,236 32.16	1,358 46.18	201 27.21	1730 39.16	917 50.11	52,866 27.61	4,189 42.37	1,578 32.87	82,398 34.97
750,000- Less Than 1,000,000	70,699 15.65	1,348 45.83	0 0	537 12.17	140 7.65	20,451 10.68	462 4.67	1,590 33.13	46,170 19.6
1,000,000- Less Than 1,500,000	84,925 18.80	0 0	0 0	537 12.17	0 0	21,962 11.47	2,993 30.27	738 15.38	58,695 24.91
1,500,000- Less Than 2,000,000	19,532 4.32	0 0	537 73	0 0	0 0	6,044 3.16	1,075 10.87	0 0.00	11,876 5.04
2,000,000- Less Than 3,000,000	13,049 2.89	0 0	0 0	0 0	0 0	8,067 4.21	537 5.44	156 3.25	4,288 1.82
3,000,000- Less Than 5,000,000	3,321 0.74	0 0	0 0	0 0	0 0	2,014 1.05	0 0	0 0	1,307 0.55
5,000,000 and more	3,044 0.67	0 0	0 0	0 0	0 0	2,254 1.18	0 0	0 0	790 0.34
Total	451,661 100	2,941 100	738 100	4417 100	1829 100	191,444 100	9,887 100	4,799 100	235,605 100

Continued 38) Distribution of Employees Aged 15 Years and Above in Kurdistan Region by Governorate, Monthly Income Groups, Job Sector, Number and Percentage-
Second Half 2015

Location and Monthly Income Groups (IQD)	Job Sector								
	Total	Unknown	Foreign government/ Foreign NGO	Foreign private	Kurdish or Iraqi NGO	Private	Mixed (Private-Public)	State owned enterprise	Government
Sulaimani									
Less Than 250,000	46,801 9.59	62 54.17	0 0	0 0	0 0	44,966 18.02	487 7.19	450 66.27	837 0.36
250,000- Less Than 500,000	105,613 21.64	32 28.34	0 0	0 0	90 20.50	81,782 32.77	1,648 24.35	169 24.88	21,891 9.51
500,000- Less Than 750,000	150,489 30.84	20 17.49	0 0	0 0	215 48.84	67,353 26.99	2,817 41.63	60 8.85	80,023 34.76
750,000- Less Than 1,000,000	75,588 15.49	0 0	183 100	0 0	0 0	20,534 8.23	1,092 16.14	0 0	53,779 23.36
1,000,000- Less Than 1,500,000	88,178 18.07	0 0	0 0	0 0	0 0	25,239 10.11	236 3.49	0 0	62,702 27.24
1,500,000- Less Than 2,000,000	10,839 2.22	0 0	0 0	0 0	135 31	2,954 1.18	487 7.19	0 0	7,263 3.16
2,000,000- Less Than 3,000,000	5,001 1.02	0 0	0 0	0 0	0 0	2,967 1.19	0 0	0 0	2,034 0.88
3,000,000- Less Than 5,000,000	2,804 0.57	0 0	0 0	0 0	0 0	2,650 1.06	0 0	0 0	154 0.07
5,000,000 and more	2,655 0.54	0 0	0 0	0 0	0 0	1,141 0.46	0 0	0 0	1,513 0.66
Total	487,967 100	114 100	183 100	0 0	441 100	249,586 100	6,767 100	678 100	230,197 100

Continued 38) Distribution of Employees Aged 15 Years and Above in Kurdistan Region by Governorate, Monthly Income Groups, Job Sector, Number and Percentage, Second Half 2015

Location and Monthly Income Groups (IQD)	Job Sector								
	Total	Unknown	Foreign government/ Foreign NGO	Foreign private	Kurdish or Iraqi NGO	Private	Mixed (Private-Public)	State owned enterprise	Government
Duhok									
Less Than 250,000	10,510 4.07	0 0	0 0	0 0	112 8	9,682 8.6	0 0	0 0	715 0.52
250,000- Less Than 500,000	56,547 21.91	0 0	0 0	0 0	464 31.11	34,768 30.88	825 31.05	457 33.44	20,034 14.45
500,000- Less Than 750,000	91,157 35.32	702 60.98	0 0	154 100	620 41.58	43,401 38.55	542 20.4	615 45.00	45,123 32.54
750,000- Less Than 1,000,000	49,654 19.24	112 9.72	0 0	0 0	104 6.98	11,442 10.16	684 25.76	0 0.00	37,312 26.9
1,000,000- Less Than 1,500,000	36,058 13.97	0 0	0 0	0 0	0 0.00	6,873 6.1	414 15.61	104 7.61	28,667 20.67
1,500,000- Less Than 2,000,000	7,573 2.93	0 0	0 0	0 0	0 0	2,076 1.84	0 0	191 13.95	5,306 3.83
2,000,000- Less Than 3,000,000	4,076 1.58	0 0	0 0	0 0	191 13	2,972 2.64	191 7.18	0 0	723 0.52
3,000,000- Less Than 5,000,000	1,225 0.47	0 0	0 0	0 0	0 0	844 0.75	0 0	0 0.00	382 0.28
5,000,000 and more	1,281 0.5	337 29.3	0 0	0 0	0 0	524 0.47	0 0	0 0.00	420 0.30
Total	258,082 100	1,151 100	0 0	154 100	1,491 100	112,582 100	2,656 100	1,368 100	138,681 100

Table 39) Distribution of Employees Aged 15 Years and Above in Kurdistan Region by Governorate, monthly Income Groups, Education Level, Number and Percentage - Second Half 2015

Location and Monthly Income Groups (IQD)	Education Level					
	Total	Institute and above	Secondary	Intermediate or Basic	Primary Completed	Non/Less than Primary
Kurdistan Region						
Less Than 250,000	85,133 7.43	3,688 1.40	2,217 2.60	6,213 5.01	22,529 8.96	50,486 11.95
250,000- Less Than 500,000	224,838 19.61	25,144 9.55	16,203 19.04	24,472 19.74	53,647 21.32	105,373 24.93
500,000- Less Than 750,000	371,528 32.41	84,918 32.27	27,339 32.12	39,521 31.89	76,870 30.55	142,880 33.81
750,000- Less Than 1,000,000	188,915 16.48	60,351 22.93	12,691 14.91	21,129 17.05	37,306 14.83	57,437 13.59
1,000,000- Less Than 1,500,000	202,316 17.65	56,756 21.57	18,877 22.18	29,022 23.42	48,125 19.13	49,536 11.72
1,500,000- Less Than 2,000,000	37,354 3.26	19,762 7.51	2,984 3.51	2,100 1.69	6,137 2.44	6,370 1.51
2,000,000- Less Than 3,000,000	22,049 1.92	6,631 2.52	3,358 3.94	1,214 0.98	5,570 2.21	5,275 1.25
3,000,000- Less Than 5,000,000	7,351 0.64	3,749 1.42	1,024 1.20	0 0	724 0.29	1,854 0.44
5,000,000 and more	6,980 0.61	2,177 0.83	425 0.50	268 0.22	672 0.27	3,437 0.81
Total	1,146,462 100	263,175 100	85,119 100	123,941 100	251,581 100	422,647 100

Continued 39) Distribution of Employees Aged 15 Years and Above in Kurdistan Region by Governorate, monthly Income Groups, Education Level, Number and Percentage - Second Half 2015

Location and Monthly Income Groups (IQD)	Education Level					
	Total	Institute and above	Secondary	Intermediate or Basic	Primary Completed	Non/Less than Primary
Erbil						
Less Than 250,000	33,162 7.73	1,963 1.91	912 2.99	2,943 5.67	10,898 11.00	16,446 11.36
250,000- Less Than 500,000	72,808 16.96	8,130 7.90	6,850 22.44	8,987 17.32	16,369 16.52	32,472 22.42
500,000- Less Than 750,000	136,606 31.82	31,933 31.02	12,031 39.41	14,025 27.03	31,765 32.06	46,851 32.35
750,000- Less Than 1,000,000	66,509 15.49	19,034 18.49	3,051 9.99	9,282 17.89	14,927 15.07	20,214 13.96
1,000,000- Less Than 1,500,000	81,629 19.02	25,487 24.76	4,760 15.59	15,383 29.64	17,658 17.82	18,341 12.66
1,500,000- Less Than 2,000,000	19,199 4.47	11,330 11.01	319 1.05	662 1.28	3,350 3.38	3,537 2.44
2,000,000- Less Than 3,000,000	12,972 3.02	3,834 3.72	1,768 5.79	456 0.88	3,221 3.25	3,694 2.55
3,000,000- Less Than 5,000,000	3,321 0.77	1,075 1.04	537 1.76	0 0	537 0.54	1,172 0.81
5,000,000 and more	3,044 0.71	150 0	300 0.98	156 0.30	340 0.34	2,098 1.45
Total	429,249 100	102,935 100	30,529 100	51,894 100	99,064 100	144,826 100

Continued 39) Distribution of Employees Aged 15 Years and Above in Kurdistan Region by Governorate, monthly Income Groups, Education Level, Number and Percentage - Second Half 2015

Location and Monthly Income Groups (IQD)	Education Level					
	Total	Institute and above	Secondary	Intermediate or Basic	Primary Completed	Non/Less than Primary
Sulaimani						
Less Than 250,000	42,502 9.05	1,039 0.99	656 1.68	2,667 5.57	9,731 9.25	28,409 16.50
250,000- Less Than 500,000	98,961 21.08	10,508 9.97	5,517 14.15	10,048 21.00	25,788 24.51	47,099 27.36
500,000- Less Than 750,000	146,765 31.26	36,445 34.59	10,828 27.78	17,207 35.96	28,919 27.49	53,366 31.00
750,000- Less Than 1,000,000	74,342 15.83	26,660 25.30	7,190 18.44	7,082 14.8	13,454 12.79	19,955 11.59
1,000,000- Less Than 1,500,000	85,685 18.25	21,371 20.28	11,018 28.26	9,239 19.31	23,700 22.53	20,357 11.83
1,500,000- Less Than 2,000,000	10,821 2.30	5,290 5.02	1,881 4.82	1,057 2.21	1,499 1.43	1,094 0.64
2,000,000- Less Than 3,000,000	5,001 1.07	501 0.48	1,282 3.29	550 1.15	1,851 1.76	816 0.47
3,000,000- Less Than 5,000,000	2,804 0.60	2,101 1.99	487 1.25	0 0	33 0.03	183 0
5,000,000 and more	2,655 0.57	1,461 1.39	125 0	0 0	221 0.21	848 0.49
Total	469,534 100	105,377 100	38,984 100	47,851 100	105,196 100	172,127 100

Continued 39) Distribution of Employees Aged 15 Years and Above in Kurdistan Region by Governorate, monthly Income Groups, Education Level, Number and Percentage - Second Half 2015

Location and Monthly Income Groups (IQD)	Education Level					
	Total	Institute and above	Secondary	Intermediate or Basic	Primary Completed	Non/Less than Primary
Duhok						
Less Than 250,000	9,469 3.82	686 1.25	648 4.15	603 2.49	1,901 4.02	5,631 5.33
250,000- Less Than 500,000	53,069 21.43	6,506 11.86	3,836 24.58	5,437 22.47	11,490 24.28	25,801 24.41
500,000- Less Than 750,000	88,157 35.59	16,539 30.15	4,480 28.71	8,289 34.26	16,186 34.21	42,663 40.36
750,000- Less Than 1,000,000	48,064 19.41	14,657 26.72	2,450 15.7	4,765 19.69	8,925 18.86	17,267 16.34
1,000,000- Less Than 1,500,000	35,002 14.13	9,898 18.04	3,099 19.86	4,400 18.18	6,767 14.30	10,838 10.25
1,500,000- Less Than 2,000,000	7,334 2.96	3,142 5.73	784 5.03	381 1.57	1,287 2.72	1,739 1.65
2,000,000- Less Than 3,000,000	4,076 1.65	2,295 4.18	308 1.97	208 0.86	499 1.05	765 0.72
3,000,000- Less Than 5,000,000	1,225 0.49	572 1.04	0 0	0 0	154 0	499 0.47
5,000,000 and more	1,281 0.52	566 1.03	0 0	112 0.46	112 0.24	491 0.46
Total	247,679 100	54,863 100	15,605 100	24,196 100	47,321 100	105,694 100

Table 40) Distribution of Employees Aged 15 Years and Above in Kurdistan Region by Governorate, Weekly Working Hours, Education Level, Number and Percentage - Second Half 2015

Working Hours Groups Per Week	Education Level					
	Total	Institute and above	Secondary	Intermediate or Basic	Primary Completed	Non/Less than Primary
Kurdistan Region						
Less Than 20	53,445 100	10,069 18.84	1,914 3.58	3,887 7.27	12,223 22.87	25,352 47.44
20 - Less Than 35	329,530 100	138,580 42.05	26,409 8.01	27,196 8.25	42,521 12.90	94,824 28.78
35 - Less Than 45	335,517 100	69,462 20.7	31,236 9.31	44,615 13.3	75,420 22.48	114,783 34.21
45 - Less Than 55	174,735 100	21,971 12.57	11,751 6.72	19,007 10.88	47,971 27.45	74,035 42.37
55 - Less Than 70	155,959 100	12,376 7.94	8,496 5.45	18,155 11.64	45,208 28.99	71,725 45.99
70 and More	100,889 100	10,884 10.79	5,480 5.43	11,227 11.13	29,098 28.84	44,199 43.81
Total	1,150,074 100	263,342 22.90	85,286 7.42	124,088 10.79	252,441 21.95	424,918 36.95
Erbil						
Less Than 20	22,019 100	4,810 21.85	661 3.00	1,636 7.43	5,214 23.68	9,698 44.04
20 - Less Than 35	130,442 100	57,872 44.37	11,806 9.05	13,907 10.66	16,816 12.89	30,040 23.03
35 - Less Than 45	105,160 100	19,410 18.46	8,816 8.38	18,534 17.62	26,107 24.83	32,293 30.71
45 - Less Than 55	72,589 100	11,713 16.14	4,980 6.86	7,187 9.90	20,364 28.05	28,346 39.05
55 - Less Than 70	48,829 100	3,295 6.75	2,141 4.38	5,050 10.34	15,478 31.70	22,866 46.83
70 and More	50,442 100	5,835 11.57	2,125 4.21	5,581 11.06	15,317 30.37	21,584 42.79
Total	429,481 100	102,935 23.97	30,529 7.11	51,894 12.08	99,297 23.12	144,826 33.72

Continued 40) Distribution of Employees Aged 15 Years and Above in Kurdistan Region by Governorate, Weekly Working Hours, Education Level, Number and Percentage - Second Half 2015

Working Hours Groups Per Week	Education Level					
	Total	Institute and above	Secondary	Intermediate or Basic	Primary Completed	Non/Less than Primary
Sulaimani						
Less Than 20	27,255 100	4,690 17.21	1,253 4.60	1,909 7.00	5,977 21.93	13,426 49.26
20 - Less Than 35	117,071 100	49,221 42.04	9,108 7.78	7,414 6.33	14,790 12.63	36,539 31.21
35 - Less Than 45	150,601 100	35,113 23.32	16,046 10.65	17,670 11.73	35,230 23.39	46,542 30.90
45 - Less Than 55	63,498 100	6,473 10.19	4,566 7.19	8,078 12.72	16,614 26.16	27,767 43.73
55 - Less Than 70	74,551 100	6,589 8.84	5,286 7.09	8,214 11.02	21,561 28.92	32,901 44.13
70 and More	38,824 100	3,458 8.91	2,892 7.45	4,713 12.14	11,334 29.19	16,427 42.31
Total	471,800 100	105,544 22.37	39,151 8.30	47,998 10.17	105,506 22.36	173,601 36.80
Duhok						
Less Than 20	4,171 100	569 13.63	0 0	343 8.22	1,032 24.74	2,228 53.41
20 - Less Than 35	82,017 100	31,487 38.39	5,495 6.70	5,875 7.16	10,914 13.31	28,246 34.44
35 - Less Than 45	79,756 100	14,939 18.73	6,374 7.99	8,411 10.55	14,083 17.66	35,949 45.07
45 - Less Than 55	38,648 100	3,785 9.79	2,205 5.71	3,743 9.68	10,993 28.44	17,922 46.37
55 - Less Than 70	32,579 100	2,492 7.65	1,069 3.28	4,891 15.01	8,169 25.07	15,959 48.98
70 and More	11,623 100	1,591 13.69	462 3.98	934 8.04	2,448 21.06	6,188 53.24
Total	248,793 100	54,863 22.05	15,605 6.27	24,196 9.73	47,639 19.15	106,491 42.80

Table 41) Distribution of Employees in Kurdistan Region by Governorate, Monthly Income Groups, Weekly Working Hours, Number and Percentage- Second Half 2015

Monthly Income Groups (IQD)	Working Hours						
	Total	70 and More	55 - Less Than 70	45 - Less Than 55	35 - Less Than 45	20 - Less Than 35	Less Than 20
Kurdistan Region							
Less Than 250,000	92,633 100	6,463 6.98	16,025 17.30	13,252 14.31	18,237 19.69	24,341 26.28	14,315 15.45
250,000- Less Than 500,000	238,693 100	18,174 7.61	32,870 13.77	42,330 17.73	58,031 24.31	76,021 31.85	11,268 4.72
500,000- Less Than 750,000	386,881 100	29,598 7.65	50,587 13.08	57,949 14.98	118,266 30.57	118,822 30.71	11,659 3.01
750,000- Less Than 1,000,000	195,941 100	19,480 9.94	23,873 12.18	21,695 11.07	64,232 32.78	59,524 30.38	7,136 3.64
1,000,000- Less Than 1,500,000	209,161 100	20,160 9.64	28,587 13.67	28,574 13.66	73,427 35.11	50,142 23.97	8,270 3.95
1,500,000- Less Than 2,000,000	37,944 100	4,180 11.02	5,631 14.84	7,763 20.46	10,195 26.87	9,923 26.15	252 0.66
2,000,000- Less Than 3,000,000	22,125 100	2,170 9.81	3,190 14.42	6,170 27.89	6,490 29.33	3,139 14.19	968 4.37
3,000,000- Less Than 5,000,000	7,351 100	520 7.07	1,221 16.61	2,777 37.77	2,365 32.17	468 6.37	0 0
5,000,000 and more	6,980 100	1,348 19.31	795 11.39	480 6.87	1,389 19.9	1,709 24.49	1,259 18.03
Total	1,197,710 100	102,093 8.52	162,779 13.59	180,989 15.11	352,632 29.44	344,090 28.73	55,126 4.60

Continued 41) Distribution of Employees in Kurdistan Region by Governorate, Monthly Income Groups, Weekly Working Hours, Number and Percentage- Second Half 2015

Monthly Income Groups (IQD)	Working Hours						
	Total	70 and More	55 - Less Than 70	45 - Less Than 55	35 - Less Than 45	20 - Less Than 35	Less Than 20
Erbil							
Less Than 250,000	35,322 100	4,134 11.70	8,336 23.60	6,001 16.99	5,302 15.01	7,250 20.53	4,298 12.17
250,000- Less Than 500,000	76,533 100	8,423 11.01	8,632 11.28	16,367 21.39	13,015 17.01	26,973 35.24	3,123 4.08
500,000- Less Than 750,000	145,236 100	17,604 12.12	13,324 9.17	20,381 14.03	38,971 26.83	48,796 33.60	6,160 4.24
750,000- Less Than 1,000,000	70,699 100	7,906 11.18	7,906 11.18	10,119 14.31	19,840 28.06	21,462 30.36	3,465 4.90
1,000,000- Less Than 1,500,000	84,925 100	9,605 11.31	9,939 11.70	12,866 15.15	25,547 30.08	23,220 27.34	3,747 4.41
1,500,000- Less Than 2,000,000	19,532 100	2,590 13.26	2,118 10.84	4,588 23.49	3,652 18.70	6,584 34	0 0
2,000,000- Less Than 3,000,000	13,049 100	1,143 8.76	998 7.64	4,288 32.86	4,568 35.01	1,762 13.51	290 2.22
3,000,000- Less Than 5,000,000	3,321 100	0 0	693 20.87	1,612 48.54	738 22.23	278 8.36	0 0
5,000,000 and more	3,044 100	300 9.86	184 6.04	312 10.24	718 23.58	456 14.98	1,075 35.31
Total	451,661 100	51,707 11.45	52,130 11.54	76,534 16.94	112,352 24.88	136,780 30.28	22,159 4.91

Continued 41) Distribution of Employees in Kurdistan Region by Governorate, Monthly Income Groups, Weekly Working Hours, Number and Percentage, Second Half 2015

Monthly Income Groups (IQD)	Working Hours						
	Total	70 and More	55 - Less Than 70	45 - Less Than 55	35 - Less Than 45	20 - Less Than 35	Less Than 20
Sulaimani							
Less Than 250,000	46,801 100	2,328 4.98	6,333 13.53	5,350 11.43	11,317 24.18	12,508 26.72	8,965 19.16
250,000- Less Than 500,000	105,613 100	7,143 6.76	20,383 19.30	16,531 15.65	28,362 26.85	27,004 25.57	6,191 5.86
500,000- Less Than 750,000	150,489 100	8,104 5.39	24,385 16.20	22,643 15.05	50,433 33.51	40,122 26.66	4,802 3.19
750,000- Less Than 1,000,000	75,588 100	10,244 13.55	9,549 12.63	5,831 7.71	24,877 32.91	22,035 29.15	3,053 4.04
1,000,000- Less Than 1,500,000	88,178 100	8,353 9.47	12,942 14.68	10,686 12.12	35,127 39.84	16,651 18.88	4,419 5.01
1,500,000- Less Than 2,000,000	10,839 100	720 6.64	1,676 15.46	1,680 15.50	5,172 47.72	1,339 12.35	252 2.32
2,000,000- Less Than 3,000,000	5,001 100	872 17.45	1,281 25.61	670 13.40	680 13.60	1,010 20.21	487 9.74
3,000,000- Less Than 5,000,000	2,804 100	520 18.54	183 6.53	974 34.72	1,128 40.21	0 0	0 0
5,000,000 and more	2,655 100	782 29.45	353 13.30	14 0.53	334 12.58	988 37.21	184 6.93
Total	487,967 100	39,066 8.01	77,086 15.8	64,378 13.19	157,429 32.26	121,656 24.93	28,351 5.81

Continued 41) Distribution of Employees in Kurdistan Region by Governorate, Monthly Income Groups, Weekly Working Hours, Number and Percentage, Second Half 2015

Monthly Income Groups (IQD)	Working Hours						
	Total	70 and More	55 - Less Than 70	45 - Less Than 55	35 - Less Than 45	20 - Less Than 35	Less Than 20
Duhok							
Less Than 250,000	10,510 100	0 0	1,356 12.90	1,901 18.09	1,618 15.39	4,583 43.61	1,051 10.00
250,000- Less Than 500,000	56,547 100	2,608 4.61	3,854 6.82	9,432 16.68	16,654 29.45	22,044 38.98	1,954 3.46
500,000- Less Than 750,000	91,157 100	3,889 4.27	12,878 14.13	14,925 16.37	28,862 31.66	29,905 32.81	697 0.76
750,000- Less Than 1,000,000	49,654 100	1,330 2.68	6,418 12.93	5,745 11.57	19,515 39.30	16,028 32.28	619 1.25
1,000,000- Less Than 1,500,000	36,058 100	2,202 6.11	5,706 15.82	5,022 13.93	12,754 35.37	10,271 28.48	104 0.29
1,500,000- Less Than 2,000,000	7,573 100	871 11.50	1,837 24.26	1,495 19.74	1,370 18.10	2,000 26.41	0 0
2,000,000- Less Than 3,000,000	4,076 100	154 3.78	911 22.35	1,212 29.74	1,242 30.46	366 8.98	191 4.68
3,000,000- Less Than 5,000,000	1,225 100	0 0	345 28.14	191 15.57	499 40.72	191 15.57	0 0
5,000,000 and more	1,281 100	266 20.75	258 20.15	154 12.03	337 26.32	266 20.75	0 0
Total	258,082 100	11,320 4.39	33,564 13.00	40,078 15.53	82,851 32.10	85,654 33.19	4,616 1.79

Table 42) Distribution of Employees Aged 15 Years and Above in Kurdistan Region by Governorate, the Main Reason for Willing Extra Work, Number and Percentage- Second Half 2015

Main Reason for Willing Extra Work	Total	Duhok	Sulaymani	Erbil
Both Sex				
Slack work/ Business conditions	63,171 100	5,952 9.42	25,490 40.35	31,729 50.23
could only find part-time work	20,796 100	971 4.67	4,181 20.11	15,643 75.22
Seasonal work	4,628 100	1,109 23.97	1,281 27.67	2,238 48.35
Child care problems	6,588 100	1,291 19.59	2,221 33.71	3,077 46.7
Other family/personal obligations	13,933 100	1,052 7.55	3,514 25.22	9,367 67.23
Health/medical limitations	1,855 100	379 20.43	222 11.99	1,254 67.58
School/training	1,723 100	1,095 63.56	435 25.26	193 11.18
Pay is not enough	56,658 100	8,851 15.62	10,208 18.02	37,599 66.36
Others	36,679 100	506 1.38	7,016 19.13	29,158 79.49
Total	206,032 100	21,206 10.29	54,568 26.49	130,258 63.22
Male				
Slack work/ Business conditions	61,375 100	5,615 9.15	24,433 39.81	31,328 51.04
Could only find part-time work	20,244 100	971 4.80	4,167 20.59	15,106 74.62
Seasonal work	4,628 100	1,109 23.97	1,281 27.67	2,238 48.35
Child care problems	5,837 100	1,291 22.11	2,157 36.96	2,389 40.93
Other family/personal obligations	12,895 100	1,052 8.16	3,027 23.48	8,815 68.36
Health/medical limitations	1,855 100	379 20.43	222 11.99	1,254 67.58
School/training	1,385 100	758 54.70	435 31.40	193 13.9
Pay is not enough	52,474 100	8,361 15.93	9,728 18.54	34,385 65.53
Others	32,978 100	506 1.53	6,539 19.83	25,933 78.64
Total	193,673 100	20,041 10.35	51,990 26.84	121,641 62.81
Female				
Slack work/ Business conditions	1,796 100	337 18.77	1,057 58.86	402 22.37
could only find part-time work	551 100	0 0	14 2.54	537 97.46
Seasonal work	0 0	0 0	0 0	0 0
Child care problems	751 100	0 0	64 8.46	687 91.54
Other family/personal obligations	1,039 100	0 0	487 46.87	552 53.13
Health/medical limitations	0 0	0 0	0 0	0 0
School/training	337 100	337 100	0 0	0 0
Pay is not enough	4,184 100	490 11.71	480 11.48	3,214 76.81
Others	3,701 100	0 0	477 12.88	3,224 87.12
Total	12,360 100	1,165 9.42	2,578 20.86	8,617 69.72

Appendix 2 (Questionnaire)

A. Introductory Data

A1	
A2	Name of quarter <input type="text"/>
A3	Code of quarter/ village <input type="text"/>
A4	Block number: <input type="text"/>
A5	Street number: <input type="text"/>
A6	Building number in census: <input type="text"/>
A7	Stage number <input type="text"/>
A8	Group number <input type="text"/>
A9	Cluster number: <input type="text"/>
A10	Family number in the cluster: <input type="text"/>
A11	The first , second, and last name of the head of household
A12	Phone number of the head of household
A13	Is the current household living here is the previous household (if the same members are living here select YES
	1. Yes <input type="text"/> 2. NO
A14	Number of the family members: <input type="text"/>
A15	Number of family members aged 5-17 years: <input type="text"/>
A16	Name and series of respondent: <input type="text"/>
A17	Respondent relation with the HHD: <input type="text"/>
A18	Date of interview: / / 2012
A19	Interview result: <input type="text"/>
A20	The total used questions for this household <input type="text"/>
A21	The number of the questionnaire for this household frome <input type="text"/> to <input type="text"/>

B. Household Roster

ID #	Please tell me the names of all individuals living in this household LIST NAMES OF ALL HH MEMBERS (INDIVIDUALS LIVING HERE AND SHARING MEALS) BEFORE ANSWERING B2 – B6			Is <i>NAME</i> Male Female	What is the relation of <i>NAME</i> to head of the family? 1. Head of Family 2. Husband/wife 3. Son/daughter 4. Son/daughter in law 5. Grandson/daughter 6. Father/mother 7. Other relatives 8. Other non-relatives	How old is <i>NAME</i> and what is <i>NAME'S</i> birthdate? [ENTER AGE IN FULL YEARS AS OF TODAY'S DATE] [NOTE 1. If it is more than 99 years, just write 99] 2. If it is more than 99 years, just write 95]	
	B1-A	B1-B	B1-C	B2	B3	B4-A	B4-B
1				___	___	___	__ / __ / __
2				___	___	___	__ / __ / __
3				___	___	___	__ / __ / __
4				___	___	___	__ / __ / __
5				___	___	___	__ / __ / __
6				___	___	___	__ / __ / __
7				___	___	___	__ / __ / __
8				___	___	___	__ / __ / __
9				___	___	___	__ / __ / __
10				___	___	___	__ / __ / __
11				___	___	___	__ / __ / __
12				___	___	___	__ / __ / __
13				___	___	___	__ / __ / __
14				___	___	___	__ / __ / __
15				___	___	___	__ / __ / __
16				___	___	___	__ / __ / __
17				___	___	___	__ / __ / __
18				___	___	___	__ / __ / __

B. Household Roster- continued

ID #	What is the marital status of NAME? [ONLY ASK IF 12 OR OLDER]	Please use the following codes for questions B6-B11 in appropriate place						What is the main reason of changing the NAME residence?											
		Duhok 11	Diala 21	Wasit 26	Zyqgar 33	Sulaimani 13	Anbar 22		Salahaddin 27	Misan 34	Kirkuk 14	Baqgdad 23	Najaf 28	Basra 35	Erbil 15	Babel 24	Qgqdsiya 31	Outside Iraq 90	Nainawa 12
		Current living place	Environment	How long NAME has lived here?	Where did NAME live before	Environment													
		If it is outside Iraq →Go to B9	1. Urban 2. rural	1. from birth time →Go to C1 2. Less than a year 3. a year or more (please write the number of years)	If it is outside Iraq →Go to B12	1. Urban 2. rural													
	1. Single 2. Married 3. Divorced 4. Widower/widow 5. Separated	The born place					1. Work 2. education 3. Marriage, Divorce, separating 4. accompanying family 5. Migration 6. Forced displacement 7. End of migration 8. End of forced displacement 9. Security 10. Other (Please identify) →GO TO THE NEXT MEMBER												
	B5	B6	B7	B8	B9	B10	B11	B12											
1																			
2																			
3																			
4																			
5																			
6																			
7																			
8																			
9																			
10																			
11																			
12																			
13																			
14																			
15																			
16																			
17																			
18																			

C. Educational Characteristics of Members of the Family – AGE 5 AND OVER ONLY

ID #	Can NAME read and write?	Has NAME ever attended school?	Is NAME currently going to school, college or university, or other educational foundation?	What is NAME's last completed year of schooling?	Please identify the class or degree	What is NAME's highest degree attained?
	1. Yes 2. No	<input type="checkbox"/> <input type="checkbox"/> 1. Yes 2. No →Go to D1	1. Yes - full time 2. Yes - part time 3. No	[SEE CODE LIST #1]	→ GO TO THE NEXT MEMBER	1. Non 2. Primary 3. Intermediate 4. Basic 5. Secondary (High School) 6. institute 7. Bachelor 8. Higher Diploma 9. Master 10. PhD/MD 99. Don't know → GO TO THE NEXT MEMBER
	C1	C2	C3	C4		C5
1	___	___	___	___	___	___
2	___	___	___	___	___	___
3	___	___	___	___	___	___
4	___	___	___	___	___	___
5	___	___	___	___	___	___
6	___	___	___	___	___	___
7	___	___	___	___	___	___
8	___	___	___	___	___	___
9	___	___	___	___	___	___
10	___	___	___	___	___	___
11	___	___	___	___	___	___
12	___	___	___	___	___	___
13	___	___	___	___	___	___
14	___	___	___	___	___	___
15	___	___	___	___	___	___
16	___	___	___	___	___	___
17	___	___	___	___	___	___
18	___	___	___	___	___	___

D. Participation in labor force- AGED 12 AND OVER ONLY

ID #	Has ... (NAME) engaged in any of the following activities during the last 7 days, even for one hour? 1. Yes, → Go to Section F 2. No	If ... (NAME) was not engaged in any activities during the last week, does ... (NAME) has any temporary activity that has not been present or because of taking leave? 1. Yes 2. No → Go to Section E
	D1	D2
1	---	---
2	---	---
3	---	---
4	---	---
5	---	---
6	---	---
7	---	---
8	---	---
9	---	---
10	---	---
11	---	---
12	---	---
13	---	---
14	---	---
15	---	---
16	---	---
17	---	---
18	---	---

D. Participation in labor force- AGED 12 AND OVER ONLY – continued

ID #	What is the main reason NAME didn't work last week?	During this absence period, has NAME received any wages (in cash or in kind) or enterprise profits?	How long will it take NAME to get back to this work?
		D5	D6
		D6	D7
1			
2			
3			
4			
5			
6			
7			
8			
9			
10			
11			
12			
13			
14			
15			
16			
17			
18			

E. Non-Working Cases

	Was <i>NAME</i> willing and able to work if an opportunity would have been available in the last 7 days?	Has <i>NAME</i> actively sought work (or tried opening a business) in the last four weeks?	How many months has <i>NAME</i> been actively seeking work?	Which of the following has <i>NAME</i> done?		
	1. Yes 2. No	1. Yes 2. No → SKIP TO E5		<ol style="list-style-type: none"> 1. Registration with job-seeking agencies (such as a public employment service) 2. Visiting government institutions 3. Directly visiting a workplace (factory, shop, facility) 4. sending application to employers 5. through advertisements in newspapers 6. Reply to newspaper advertisements 7. Look at job advertisements in the internet 8. Respond to job advertisements in the internet 9. Ask relatives and friends to inform you about jobs 10. Ask relatives or friends to recommend you in a job 11. Request a loan in order to start a business. 12. seek a land, building, equipment or machinery to start a business 13. Apply for a permit or license to start a business 14. Others (specify) 98. Don't know <p style="color: blue; font-weight: bold; margin-top: 10px;">[UP TO THREE ACTIVITIES IS NOT ALLOWEDED PLEAS MARK (SELECT) THE MOST RECENT TREE ATTEMOS] IN ORDER OF IMPORTANCE BASED ON TIME IN EACH</p> <p style="color: red; font-weight: bold; margin-top: 5px;">→ GO TO THE NEXT MEMBER</p>		
	E1	E2	E3	First E4a	Second E4b	Third E4c
1	___	___	___	___	___	___
2	___	___	___	___	___	___
3	___	___	___	___	___	___
4	___	___	___	___	___	___
5	___	___	___	___	___	___
6	___	___	___	___	___	___
7	___	___	___	___	___	___
8	___	___	___	___	___	___
9	___	___	___	___	___	___
10	___	___	___	___	___	___
11	___	___	___	___	___	___
12	___	___	___	___	___	___
13	___	___	___	___	___	___
14	___	___	___	___	___	___
15	___	___	___	___	___	___
16	___	___	___	___	___	___
17	___	___	___	___	___	___
18	___	___	___	___	___	___

E. Non-Working Cases- continued

	<p>1. Waiting to go back to the previous job</p> <p>2. Has found a job and waiting to start</p> <p>3. NAME is a full time student</p> <p>4. NAME is retiree</p> <p>5. NAME is a housewife committed to housework</p> <p>6. NAME is physically or mentally disabled or sick that prevents him/her to work</p> <p>7. NAME has an income doesn't need to work</p> <p>8. Believes there is no work</p> <p>9. Tired of seeking for work</p> <p>10. doesn't know how to look for job</p> <p>11. Can't find appropriate work</p> <p>12. Not qualified for work</p> <p>13. Because of family reasons or illness could not seek for work during the last 4 weeks. Later would try to find a job</p> <p>14. Other (specify)</p> <p>98. Doesn't know</p> <p>→GO TO THE NEXT MEMBER</p>
	E5
1	_ _ _ _
2	_ _ _ _
3	_ _ _ _
4	_ _ _ _
5	_ _ _ _
6	_ _ _ _
7	_ _ _ _
8	_ _ _ _
9	_ _ _ _
10	_ _ _ _
11	_ _ _ _
12	_ _ _ _
13	_ _ _ _
14	_ _ _ _
15	_ _ _ _
16	_ _ _ _
17	_ _ _ _
18	_ _ _ _

Working Cases: FA first activity

ID #	Now I'd like to ask you some questions about your work. Many people engage in more than one activity. If NAME does more than one activity, let's start with the one where NAME typically spend most of the time per week Where is the main place of the work? NOTE: it refers to the main activity, even the "NAME" has been temporary away from the work	What is the main activity of this workplace (firm/organization)? USE THE CODELIST IN ATTACHMENT	How many persons are employed in this workplace (firm/organization)?		What is the status of this workplace?
			1. less than 10 2. 10-24 3. 25-49 4. 50-249 5. 250-499 6. 500 or more 9. Don't know	[IF MORE THAN 10 OR UNKNOWN SKIP TO FB4] [IF LESS than 10, ASK RESPONDENT TO SPECIFY HOW MANY]	
	FB1	FB2	FB3.1	FB3.2	FB4
1	___	___ ___	___	___	___
2	___	___ ___	___	___	___
3	___	___ ___	___	___	___
4	___	___ ___	___	___	___
5	___	___ ___	___	___	___
6	___	___ ___	___	___	___
7	___	___ ___	___	___	___
8	___	___ ___	___	___	___
9	___	___ ___	___	___	___
10	___	___ ___	___	___	___
11	___	___ ___	___	___	___
12	___	___ ___	___	___	___
13	___	___ ___	___	___	___
14	___	___ ___	___	___	___
15	___	___ ___	___	___	___
16	___	___ ___	___	___	___
17	___	___ ___	___	___	___
18	___	___ ___	___	___	___

Working Cases: FA first activity- continued

ID #	What is the main occupation of NAME in this job? Please describe:	Is this job:	Is NAME a... In this job/ activity ?
	<ol style="list-style-type: none"> 1. Manager 2. Professional 3. Technician and assistant professional 4. Clerical support workers 5. Service and sales workers 6. Skilled in agriculture, forestry and fishery 7. Craft and related trades worker 8. Plant and machine operator, and assembler 9. Elementary occupations 10. Military occupation 	<ol style="list-style-type: none"> 1. Permanent 2. Temporary (fixed term; for example a two-month job NAME might not return to) 3. Seasonal (expected to return to it) 4. Casual (For one or a few days) 5. Task-based (depends on finishing a particular task, no matter how long) 	<ol style="list-style-type: none"> 1. Paid worker 2. Business owner 3. Self-employed 4. Unpaid worker in a family business or farm. 5. Unpaid worker in a different business or voluntary work (other than apprentice) 6. Apprentice (unpaid)
	FA5	FA6	FA7
1	___	___	___
2	___	___	___
3	___	___	___
4	___	___	___
5	___	___	___
6	___	___	___
7	___	___	___
8	___	___	___
9	___	___	___
10	___	___	___
11	___	___	___
12	___	___	___
13	___	___	___
14	___	___	___
15	___	___	___
16	___	___	___
17	___	___	___
18	___	___	___

Working Cases: FA first activity- **continued**

ID #	How many hours does <i>NAME</i> usually work in this activity per week? ASK FOR NUMBERS OF DAYS USUALLY WORKED PER WEEK AND USUAL HOURS PER DAY AND MULTIPLY IF RESPONDENT IS A PAID WORKER (FA7=1), ASK FA9-FA13; OTHERWISE, GO TO FA14	Does <i>NAME</i> receive any of the following benefits? Employer contributes to Social Guarantee Fund for [<i>NAME</i>]? 1. Yes 2. No 9. Doesn't know	Does <i>NAME</i> receive any of the following benefits? Health Insurance or access to free or lower cost care at clinics? 1. Yes 2. No 9. Doesn't know	Does <i>NAME</i> receive any of the following benefits? Paid Vacation? 1. Yes 2. No 9. Doesn't know	Does <i>NAME</i> receive any of the following benefits? Paid sick leave? 1. Yes 2. No 9. Doesn't know
	FA8	FA9	FA10	FA11	FA12
1					
2					
3					
4					
5					
6					
7					
8					
9					
10					
11					
12					
13					
14					
15					
16					
17					
18					

Working Cases: FA first activity- **continued**

ID #	Did NAME sign a contract for this job? 1. Yes 2. No 9. Does not know	Taking into account wages, profits, tips, fees, and other payments, what is the typical income that NAME earns at this work activity? SELECT ONE OF THE FOLLOWING TIME PERIODS ONLY, THE MORE SIMPLE ONE FOR RESPONDENT 1. Monthly (in thousand IDs) 2. Bi-Weekly _ (in thousand IDs) 3. Weekly (in thousand IDs) 4. Daily (in thousand IDs) [SPECIFY AMOUNT and MARK TIME UNIT CODE (1, 2, 3 or 4)]	Does NAME have another work activity? 1. Yes 2. No → Section G	
	FA13	FA14.1: AMOUNT	FA14.2: TIME UNIT	FA15
1				
2				
3				
4				
5				
6				
7				
8				
9				
10				
11				
12				
13				
14				
15				
16				
17				
18				

Working Cases: FB first activity

ID #	Now I'd like to ask you some questions about your work. Many people engage in more than one activity. If NAME does more than one activity, let's start with the one where NAME typically spend most of the time per week Where is the main place of the work? 1. Offices 2. his/ her home 3. others home other than his/hers 4. Factory or plant 5. Firm 6. Construction and building 7. Shop, market or kiosk 8. Mobile in various places 9. Others	What is the main activity of this workplace (firm/organization)? USE THE CODELIST IN ATTACHMENT	How many persons are employed in this workplace (firm/organization)?		What is the status of this workplace? 1. Government 2. State owned enterprise 3. Mixed private-public (e.g., public agency working for a private company; or publicly owned but privately managed) 4. Private 5. Kurdish or Iraqi NGO 6. Foreign private 7. Foreign government/foreign NGO 98. Doesn't know
			1. less than 10 2. 10-24 3. 25-49 4. 50-249 5. 250-499 6. 500 or more 9. Don't know [IF MORE THAN 10 OR UNKNOWN GO TO FB4	IF LESS than 10, ASK RESPONDENT TO SPECIFY HOW MANY	
	FB1	FB2	FB3.1	FB3.2	FB4
1	___	___	___	___	___
2	___	___	___	___	___
3	___	___	___	___	___
4	___	___	___	___	___
5	___	___	___	___	___
6	___	___	___	___	___
7	___	___	___	___	___
8	___	___	___	___	___
9	___	___	___	___	___
10	___	___	___	___	___
11	___	___	___	___	___
12	___	___	___	___	___
13	___	___	___	___	___
14	___	___	___	___	___
15	___	___	___	___	___
16	___	___	___	___	___
17	___	___	___	___	___
18	___	___	___	___	___

Working Cases: FB. Second Activity- continued

ID #	<p>What is the main occupation of NAME in this job?</p> <ol style="list-style-type: none"> 1. Managers 2. Professionals 3. Technicians and associate professionals 4. Clerical support workers 5. Service and sales workers 6. Skilled agricultural, forestry and fishery workers 7. Craft and related trades workers 8. Plant and machine operators, and assemblers 9. Elementary occupations 10. Military occupations 	<p>Is this job:</p> <ol style="list-style-type: none"> 1. Permanent 2. Temporary (fixed term; for example, a two-month job NAME might not return to) 3. Seasonal (expect to return to it) 4. Casual (For the day or a few days) 5. Task-based (depends on finishing a particular task, no matter how long) 	<p>Is NAME a..... In this job/work?</p> <ol style="list-style-type: none"> 1. Paid worker 2. Business owner 3. Self-employed 4. Unpaid worker in a family business or farm. 5. Unpaid worker in a different business or voluntary work (other than apprentice) 6. Apprentice (unpaid)
	FB5	FB6	FB7
1			
2			
3			
4			
5			
6			
7			
8			
9			
10			
11			
12			
13			
14			
15			
16			
17			
18			

Working Cases: FB. Second Activity- continued

ID #	How many hours does <i>NAME</i> usually work in this activity per week? ASK FOR NUMBERS OF DAYS USUALLY WORKED PER WEEK AND USUAL HOURS PER DAY AND MULTIPLY IF RESPONDENT IS A PAID WORKER (FB7=1), ASK FB9-FB13; OTHERWISE, SKIP TO FB14	Does <i>NAME</i> receive any of the following benefits? Employer contributes to Social Guarantee Fund for [<i>NAME</i>]? 1. Yes 2. No 9. Doesn't know	Does <i>NAME</i> receive any of the following benefits? Health Insurance or access to free or lower cost care at clinics? 1. Yes 2. No 9. Doesn't know	Does <i>NAME</i> receive any of the following benefits? Paid Vacation? 1. Yes 2. No 9. Doesn't know	Does <i>NAME</i> receive any of the following benefits? Paid sick leave? 1. Yes 2. No 9. Doesn't know
	FA8	FA9	FA10	FA11	FA12
1					
2					
3					
4					
5					
6					
7					
8					
9					
10					
11					
12					
13					
14					
15					
16					
17					
18					

Working Cases: FB. Second Activity- continued

ID #	Did NAME sign a contract for this job? 1. Yes 2. No 9. Does not know	Taking into account wages, profits, tips, fees, and other payments, what is the typical income that NAME earns at this work activity? SELECT ONE OF THE FOLLOWING TIME PERIODS ONLY, THE MORE SIMPLE ONE FOR RESPONDENT 1. Monthly (in thousand IDs) 2. Bi-Weekly _ (in thousand IDs) 3. Weekly (in thousand IDs) 4. Daily (in thousand IDs) [SPECIFY AMOUNT and TIME UNIT CODE (1, 2, 3 or 4)]		Does NAME have more than three jobs or work-related activities?? 1. Yes, 2. No -> SKIP TO SECTION G	How many hours does NAME typically spend in all these work activities per week? [THE 2 PREVIUSE ACTIVITIES ARE NOT INCLUDED]
	FC13	FC14.1: AMOUNT	FC14.2: TIME UNIT	FC15	FC16
1		__ __ __ __ __			
2		__ __ __ __ __			
3		__ __ __ __ __			
4		__ __ __ __ __			
5		__ __ __ __ __			
6		__ __ __ __ __			
7		__ __ __ __ __			
8		__ __ __ __ __			
9		__ __ __ __ __			
10		__ __ __ __ __			
11		__ __ __ __ __			
12		__ __ __ __ __			
13		__ __ __ __ __			
14		__ __ __ __ __			
15		__ __ __ __ __			
16		__ __ __ __ __			
17		__ __ __ __ __			
18		__ __ __ __ __			

G. Part-Time and Under Employment: IF NAME HAD MORE THAN ONE ACTIVITY, ASK G1; IF ONLY ONE ACTIVITY, START AT G2

ID #	READ THE HOURS IN ALL JOBS IN A TYPICAL WEEK, FROM F8A, F8B, F8C AND F16C. AND CONFIRM WITH THE RESPONDENT THOSE HOURS: □	THEN ASK: Taking together the average hours per week you told me you worked in each activity, it seems that your total normal hours per week is:	Is it correct? 1. Correct 2. Incorrect IF INCORRECT, ASK RESPONDENT TO CONFIRM THE HOURS IN EACH ACTIVITY AND CHANGE F8A, F8B, AND F16B AS NECESSARY, THEN RE-ENTER TOTAL BELOW □	Would NAME want to work more hours per week than his/her current working hours? 1. Yes 2. No (→ GO TO THE NEXT MEMBER)	Since NAME would like to work more, what is the MAIN reason working less than what he/she would like to? IF IT IS MORE THAN ONE, CHOOSE THE MOST IMPORTANT ONE 1. Slack work/business conditions 2. Could only find part-time work 3. Seasonal work 4. Child care problems 5. Other family/personal obligations 6. Health/medical limitations 7. School/training 8. Pay is not enough 9. Other	Was NAME willing and able to do an additional job/work or spent more hours in one of these activities if an opportunity to do so would have been available in the last 7 days? 1. Yes 2. No
	G1	G2	G3	G4	G5	G6
1						
2						
3						
4						
5						
6						
7						
8						
9						
10						
11						
12						
13						
14						
15						
16						
17						
18						

G. Part-Time and Under Employment: continued

ID #	Has NAME sought additional work/ job with more hours –or sought to open a business in the last four weeks? 1. Yes 2. No (→ GO TO THE NEXT MEMBER)	How many months has NAME sought additional work or job with more hours? NOTE: LESS THAN A MONTH PLEASE WRITE "0"	Which of the following has NAME done to find additional work or a job with more hours?			
			1. Registration with job-seeking agencies (such as a public employment service) 2. Visiting government institutions 3. Directly visiting a workplace (factory, shop, facility) 4. sending application to employers 5. through advertisements in newspapers 6. Reply to newspaper advertisements 7. Look at job advertisements in the internet 8. Respond to job advertisements in the internet 9. Ask relatives and friends to inform you about jobs 10. Ask relatives or friends to recommend you in a job 11. Request a loan in order to start a business. 12. seek a land, building, equipment or machinery to start a business 13. Apply for a permit or license to start a business 14. Others (specify) 98. Don't know [Select the 4 most important activities] → GO TO THE NEXT MEMBER)			
	G7	G8	G9a	G9b	G9c	G9d
1						
2						
3						
4						
5						
6						
7						
8						
9						
10						
11						
12						
13						
14						
15						
16						
17						
18						

Researcher's Name and Signature:	Researcher's Code: —	Date: 2012 / /
----------------------------------	-----------------------------	-----------------------

Supervisor's Name and Signature:	Supervisor's Code: —	Date: 2012 / /
----------------------------------	-----------------------------	-----------------------

Auditor's Name and Signature:	Auditor's Code: —	Date: 2012 / /
-------------------------------	--------------------------	-----------------------

Data Entry's Name and Signature:	Data Entry's Code: —	Date: 2012 / /
----------------------------------	-----------------------------	-----------------------

Ministry of Planning - Kurdistan Region Statistics Office

www.krso.gov.krd