



Kurdistan Region Government
Ministry of Planning
Kurdistan Region Statistics Office

Weather Statistics in Kurdistan Region Governorates for the years 2020-2012

Agriculture and Environment Statistics Department
2021 April

Rainfall level in Kurdistan region for the years 2012-2020 / mm

Station: Erbil													
Year	Month												Total
	January	February	March	April	May	June	July	August	September	October	November	December	
2012	56.1	31.5	72.1	14.5	26.8	T.R	T.R	0.0	0.2	23.4	45.9	95.9	366
2013	174	55.8	17.7	37.4	40.6	0.0	0.0	0.0	T.R	0.2	19.1	86.6	432
2014	74.9	8.2	93.4	14.7	2.5	0.0	0.0	1.0	0.0	68.7	69.2	56.0	389
2015	37.4	44.3	56.8	17.3	5.4	0.0	0.0	0.0	4.5	36.4	104.4	115.8	422
2016	45.6	33.0	103.5	46.4	6.4	2.5	0.0	0.0	0.0	T.R	22.3	116.1	376
2017	37.9	23.4	77.8	55.8	3.7	T.R	0.0	0.0	0.0	T.R	37.6	29.4	266
2018	44.0	164.4	8.0	77.9	74.6	1.7	0.0	0.0	0.0	42.3	132.9	188	733.6
2019	119.1	64.2	220.1	123.5	5.4	0.7	0.0	T.R	0.0	19.3	3.9	45.8	602
2020	101.4	55.7	126.5	43.2	14.3	1.5	0.1	0.0	0.0	0.2	45.4	28.9	417.2

T.R: rain is less than 0.03 mm

Station: Sulaimany													
Year	Month												Total
	January	February	March	April	May	June	July	August	September	October	November	December	
2012	109.2	94.6	175.0	19.6	34.8	0.0	0.0	0.0	0.0	32.3	92.7	125.0	683.2
2013	171.5	54.4	15.0	30.3	0.0	0.0	0.0	0.0	0.0	0.5	166.4	186.6	624.7
2014	98.0	12.0	174.8	56.9	8.5	0.0	0.0	0.0	0.0	64.4	153	118.3	685.9
2015	119.6	82.1	112.9	29.5	20.0	0.0	0.0	0.0	14.1	132.6	194.1	86.3	791.2
2016	110.2	91.5	156.8	69.8	5.5	0.0	0.0	0.0	0.0	2.5	33.2	185.8	655.3
2017	53.0	85.3	144.7	58.0	25.0	0.0	0.0	0.0	0.0	2.8	103.6	12.4	484.8
2018	89.4	400.0	34.3	124.5	69.6	0.0	0.0	0.0	0.0	84.6	116.7	316.1	1235.2
2019	151.2	156.9	265.7	177.3	44.1	4.6	0	0	0	71.8	11.9	144.5	1028.0
2020	104.1	136.5	184.8	74.4	13.4	0.1	0.0	0.0	0.5	0.0	204.2	21.7	739.7

Station :Duhok													
Year	Month												Total
	January	February	March	April	May	June	July	August	September	October	November	December	
2012	101.9	80.7	109.8	8.5	2.7	0.6	1.4	0.0	0.0	0.0	54.6	169.0	529.2
2013	306.4	100	47.4	26.7	28.4	0.5	0.0	0.0	2.2	2.7	129.1	86.0	729.4
2014	168.2	8.2	134.5	22.1	15.9	6.1	0.0	0.3	2.5	111.9	153.5	75.9	699.1
2015	82.4	64.6	71.4	40.2	9.6	T.R	0.0	T.R	12.2	38.2	80.1	107.1	505.8
2016	144.0	65.7	104.1	58.6	3.8	1.6	0.0	0.0	T.R	8.8	22.6	101.9	511.1
2017	60.3	20.4	102.9	81.1	33.4	0.0	0.0	T.R	0.0	4.7	33.7	21.9	358.4
2018	76.0	121.5	19.3	121.9	120.6	1.1	T.R	0.0	0.0	66.0	181.1	245.5	953.0
2019	143.6	85.0	264.0	174.7	39.6	0.8	0.0	1.3	0.0	43.3	19.3	137.8	909.4
2020	110.7	131.7	282.0	68.5	16.2	1.0	trs	0.8	0.0	1.6	39.7	43.8	696.0

T.R: rain is less than 0.03 mm

Station :Halabjah													
Year	Month												Total
	January	February	March	April	May	June	July	August	September	October	November	December	
2012													
2013	151.8	57.0	15.6	25.6	59.0	0.0	0.0	0.0	0.0	0.2	113.0	130.4	552.6
2014	38.8	13.0	0.4	16.0	1.2	0.0	0.0	0.0	0.0	78.0	152.0	60.2	359.6
2015	75.2	73.0	67.6	9.2	0.0	0.6	0.0	0.0	3.6	170.8	133.8	78.2	612.0
2016	105.2	69.2	117.2	65.6	10.4	0.0	0.0	0.0	0.0	0.8	10.8		379.2
2017	58.2	94.8	110.8	64.2	18.4	0.0	0.0	0.0	0.0	0.2	51.8		398.4
2018	36.2	97.0	5.2	50.0	22.4	0.0	0.0	0.0	0.0	37.7	112.8	292.0	653.3
2019	139.2	118.2	176.8	117.8	20	0	0	0	0	46.29	7.4	113.3	738.9
2019	143.6	85.0	264.0	174.7	39.6	0.8	0.0	1.3	0.0	43.3	19.3	137.8	909.4
2020	91.4	68.1	124.3	83.6	10	0	0	0	0	0	97.8	28	503.2

*Weather data has not been recorded in Halabjah governorate due to not being a weather recording station there in 2012.

The rate of Humidity in Kurdistan Region governorates 2012-2020

Humidity rate %									Erbil
Year									Month
2020	2019	2018	2017	2016	2015	2014	2013	2012	
80.9	73.6	61.6	68.8	76.4	72.5	72.1	73.9	74.4	January
78.9	71.6	71.6	63.5	65.3	68.4	56.0	75.6	63.6	February
73.8	74.4	57.2	65.5	55.2	64.3	66.2	61.6	61.7	March
66.7	71.3	52.1	58.3	53.9	52.2	48.6	53.9	49	April
55.6	45.0	50.5	38.1	40.5	34.5	39.8	47.7	41.5	May
37	32.8	38.0	35.0	32.0	33.2	30.3	31.2	25.8	June
29.5	31.8	34.3	32.2	27.3	25.4	29.1	29.1	22.1	July
35.1	31.9	31.2	31.3	30.5	30.8	28.3	28.7	28.5	August
33	32.9	32.0	31.3	39.4	29.9	39.8	37.8	29.0	September
38.9	47.9	47.5	44.1	41.0	54.6	58.6	39.4	48.6	October
66	52.7	73.6	62.0	47.5	69.8	65.6	67.9	64.6	November
71.1	76.1	82.1	60.1	76.4	67.7	74.7	66	77.2	December
55.5	53.5	52.6	49.2	48.8	50.3	50.8	51.1	48.8	Average

Humidity rate %									Duhok
Year									Month
2020	2019	2018	2017	2016	2015	2014	2013	2012	
75	72.0	67.0		76.0	71.0	69.0	76.0	70.0	January
74	73.0	71.0		78.0	71.0	55.0	74.0	60.0	February
66	73.0	57.0		69.0	69.0	63.0	56.5	59.0	March
58	68.0	55.0		52.0	66.0	53.0	51.5	53.0	April
44	46.0	54.0		41.0	45.0	44.0	46.4	46.0	May
31	32.0	33.0		31.0	29.0	32.0	29.0	32.0	June
28	31.0	28.0		29.0	23.0	31.0	25.1	29.0	July
29	30.0	32.0		24.0	26.0	27.0	26.8	30.0	August
29	33.0	32.0		34.0	32.0	37.0	31.2	28.0	September
35	46.0	49.0		39.0	54.0	59.0	30.9	46.0	October
64	52.0	77.0		44.0	69.0	67.0	64.7	63.0	November
67	72.0	82.0		72.0	70.0	80.0	66.0	72.0	December
50	52.3	53.1		49.1	52.1	51.0	48.2	49.0	Average

Humidity rate %									Sulaimany
Year									Month
2020	2019	2018	2017	2016	2015	2014	2013	2012	
73.8	80.9	66.8	66.9	78.5	76.5	62.0	68.0	72.0	January
70	69.9	71.2	67.1	66.1	73.4	52.8	68.0	60.0	February
63.6	72.2	57.0	70.1	68.4	66.8	58.0	50.0	55.0	March
59.5	66.3	53.9	57.3	60.5	58.3	58.8	44.0	46.0	April
39.7	45.3	51.5	38.7	46.5	38.9	37.1	43.0	35.0	May
28.1	27.8	28.5	28.2	29.9	31.2	26.4	25.0	24.0	June
24.5	26	25.0	22.3	26.0	25.6	25.2	23.0	25.0	July
27.1	28.4	28.6	24.4	23.5	25.7	21.6	24.0	13.0	August
27.9	31.3	31.1	28.7	33.9	30.0	29.9	30.0	28.0	September
33.6	48.1	50.0	43.3	40.9	55.2	57.2	34.0	45.0	October
67.1	49.2	74.6	64.4	50.2	69.4	70.0	65.0	64.0	November
70.4	71.1	85.1	59.3	77.2	65.1	81.9	63.0	72.0	December
48.78	51.4	51.9	47.6	50.1	51.3	48.4	44.8	44.9	Average

Humidity rate %									Halabjah
Year									Month
2020	2019	2018	2017	2016	2015	2014	2013	2012	
71.72	75.6	62.6	64.3	74.1	70.7	63.7	7.9		January
67.70	68.9	67.7	59.1	58.9	65.5	54.5	11.3		February
63.70	69.3	53.6	66.1	67.1	61.7	60.2	15.2		March
59.52	66.1	52.0	57.4	49.6	46.0	52.7	20.4		April
32.61	40.0	48.0	31.1	35.8	11.7		43.9		May
16.31	16.7		16.1	26.5	15.1	14.7	14.8		June
15.60	15.3	14.5	12.4	22.4	13.0	13.8	12.8		July
16.48	16.9	15.9	12.7	16.7	12.4	13.1	13.6		August
14.85	19.1		14.2	25.8	18.6	18.7	16.8		September
	40.9	39.6	24.9	25.5	43.3	45.3	21.8		October
72.10	45.0	72.3	53.2	36.0		63.2	65.6		November
69.76	41.1					78.6	53.3		December
45.49	42.9	47.4	37.4	39.8	35.8	43.5	24.8		Average

*Weather data has not been recorded in Halabjah governorate due to not being a weather recording station there in 2012.

Temperature in Kurdistan region's governorates 2012-2020

Erbil													
Year	Temperature	Month											
		January	February	March	April	May	June	July	August	September	October	November	December
2012	Lowest	4.6	5.6	6.9	16.9	21.7	27.2	30	28.8	24.4	19.1	13.3	7.1
	Highest	11.8	13.5	15.5	27	32.5	39.1	41.8	41.5	37.2	29.8	21	4.9
	Average	8.2	9.55	11.2	21.95	27.1	33.15	35.9	35.15	30.8	24.45	17.15	6
2013	Lowest	2.2	7.7	10	14.5	19.4	24.8	27.3	27.1	22	17.5	12.8	5.6
	Highest	12.7	16.4	19.9	26.2	31.2	38	41.3	41	35.6	28.9	21.9	13.6
	Average	7.45	12.05	14.95	20.35	25.3	31.4	34.3	34.05	28.8	23.2	17.4	9.6
2014	Lowest	6.1	6.2	11	14.5	20.8	25.1	28.2	27.9	23.1	17.7	9.7	7.6
	Highest	15	16.8	20.7	26.7	33.7	38.5	41.8	42.7	36	27.9	19.5	15.9
	Average	10.6	11.5	15.8	20.6	27.3	31.8	35	35.3	29.6	22.8	14.6	11.7
2015	Lowest	4.5	6	8.7	13.4	21.2	25	28.9	28.3	25.9	19.6	10.3	5.6
	Highest	13.6	16	19.7	25	33.6	38	43.4	42.6	38.6	29.6	19.8	14.2
	Average	9.05	11	14.2	19.2	27.4	31.5	36.15	35.45	32.25	24.6	15.1	9.9
2016	Lowest	4.1	7.3	10.0	14.5	19.9	26.9	28.6	28.9	23	18.0	9.1	4.6
	Highest	11.7	17.0	25.2	24.8	32.3	38.2	42.3	43.4	36	31.0	22	12.7
	Average	7.9	12.15	17.6	19.65	26.1	32.55	35.45	36.15	29.5	24.5	15.6	8.7
2017	Lowest	3.26	3.44	9.78	13.59	20.33	24.63	29.58	28.93	25.19	17.84	11.90	8.90
	Highest	20.12	18.32	24.67	42.98	38.78	43.80	43.59	39.84	29.43	29.43	21.70	18.70
	Average	11.69	10.88	17.22	28.29	29.56	34.21	36.58	34.38	27.31	23.64	16.8	13.8
2018	Lowest	6.60	8.10	13.50	15.70	20.60	25.70	28.90	27.60	25.40	20.90	12.20	8.60
	Highest	14.70	16.70	23.20	26.70	31.00	37.90	42.00	41.50	38.30	30.50	19.70	14.4
	Average	10.65	12.40	18.35	21.20	25.80	31.80	35.45	34.55	31.85	25.70	15.95	11.50
2019	Lowest	6.00	6.70	8.50	10.96	19.80	25.70	25.40	29.50	23.50	19.90	11.00	8.50
	Highest	13.00	14.90	16.30	20.47	32.60	40.30	40.80	40.20	36.80	30.90	22.20	16.00
	Average	9.50	10.80	12.40	15.72	26.20	33.00	33.10	34.85	30.15	25.40	16.60	12.25
2020	Lowest	5.60	6.50	19.40	13.40	19.50	30.70	30.00	27.30	26.10	19.20	13.30	7.10
	Highest	12.50	13.20	11.60	24.00	32.30	37.70	42.70	39.40	39.30	32.40	20.90	16.40
	Average	9.05	9.85	15.50	18.70	25.90	34.20	36.35	33.35	32.70	25.80	17.10	11.75

Sulaimany

Year	Temperature	Month											
		January	February	March	April	May	June	July	August	September	October	November	December
2012	Lowest	1.8	2	4.4	14.3	18.8	24.8	27.1	26.3	22.7	17.7	11.1	5.3
	Highest	10.3	11.8	14.1	25	30.7	37	39.9	40.6	36	28.9	20.1	13.8
	Average	6.05	6.9	9.25	19.65	24.75	30.9	33.5	33.45	29.35	23.3	15.6	9.55
2013	Lowest	3.2	5.7	8.6	13.5	18.2	23.9	26	25.8	19.9	14.3	10.4	2.7
	Highest	11.7	14.9	19.1	24.9	28.9	36.2	40.4	39.5	34.6	27.4	19.3	11.2
	Average	7.45	10.3	13.85	19.2	23.55	30.05	33.2	32.65	27.25	20.85	14.9	7.0
2014	Lowest	3.4	3.9	8.9	11.4	18	23.1	26.6	26.6	20.9	15.4	8.2	5.8
	Highest	12	14.2	17.9	24	31.1	36.9	40.2	41.1	35.3	27.5	18.2	15
	Average	7.7	9.05	13.4	17.7	24.55	30	33.4	33.85	28.1	21.45	13.2	10.4
2015	Lowest	3	4.1	7	9.9	17	22.1	27.1	27.1	23.3	16.7	7.8	3.3
	Highest	12.7	15.3	18.7	24.2	32.1	38.1	42.5	42.2	37.5	28.7	18.8	12.6
	Average	7.85	9.7	12.85	17.05	24.55	30.1	34.8	34.65	30.4	22.7	13.3	8.0
2016	Lowest	2.0	5.5	7.2	11.4	16.0	22.6	26.4	27.1	20.3	15.2	7.6	3
	Highest	11.4	16.5	18.3	24.4	31.0	37.2	41.7	42.8	35.8	31.0	21.3	11.1
	Average	6.7	11	12.75	17.9	23.5	29.9	34.05	34.95	28.05	23.1	14.5	7.1
2017	Lowest	1.8	0.5	8.0	12.5	17.8	23.5	28.1	27.3	23.0	14.7	9.1	6.1
	Highest	11.4	11.1	16.5	23.5	30.8	36.6	41.6	41.9	38.4	27.9	19.7	17.1
	Average	6.6	5.8	12.25	18	24.3	30.05	34.85	34.6	30.7	21.3	14.4	11.6
2018	Lowest	3.2	5.9	10.7	12.7	17.1	23.3	26.5	25.9	22.3	17.3	9.8	5.6
	Highest	12.7	14.6	21.3	23.8	28.1	36.3	40.9	40.2	36.7	27.7	17.5	12.5
	Average	7.95	10.25	16	18.25	22.6	29.8	33.7	33.05	29.5	22.5	13.65	9.05
2019	Lowest	2.7	4.3	6.2	10.2	18.4	25.6	25.7	27.4	22	17.2	9.7	6.4
	Highest	11.5	13	14.2	19.3	30.3	37.8	39.2	40.8	35.5	28.8	19.8	14
	Average	7.1	8.65	10.2	14.75	24.35	31.7	32.45	34.1	28.75	23	14.75	10.2
2020	Lowest	3.2	3.6	8.6	12.6	18.5	23.1	28.5	25.7	24.2	16.6	10.4	3.8
	Highest	10.5	11.7	18.7	22.6	30.8	36.6	41	38.6	37.9	32.5	20.9	16.3
	Average	6.9	7.7	13.7	17.6	24.7	29.9	34.8	32.2	31.1	24.6	15.7	10.1

Duhok													
Year	Temperature	Month											
		January	February	March	April	May	June	July	August	September	October	November	December
2012	Lowest	3.1	3.2	4.3	13.9	17.8	24.0	25.7	24.7	20.7	15.9	11.6	6.0
	Highest	11.0	12.0	14.2	25.4	30.9	37.3	40.4	40.0	35.8	28.5	20.2	13.5
	Average	7.03	7.61	9.24	19.63	24.36	30.62	33.08	32.37	28.24	22.20	15.92	9.71
2013	Lowest	3.2	5.9	8.9	12.6	17.7	22.1	24.6	24.5	19.9	14.5	10.9	2.8
	Highest	11.1	14.7	18.2	24.6	29.7	36.3	39.7	39.8	34.2	27.0	20.4	12.0
	Average	7.11	10.32	13.56	18.61	23.68	29.20	32.15	32.15	27.02	20.72	15.63	7.43
2014	Lowest	6.8	8.7	16.4	21.3	25.7	26.0	22.4	18.7	13.6	9.7	4.5	4.4
	Highest	14.4	17.5	25.6	33.9	40.5	40.1	36.5	31.3	24.2	18.9	15.2	13.4
	Average	10.60	13.10	21.00	27.60	33.10	33.05	29.45	25.00	18.90	14.30	9.85	8.90
2015	Lowest	3.7	5.4	8.2	11.6	18.2	22.0	26.4	25.8	23.1	28.0	8.6	3.9
	Highest	11.9	14.1	17.5	22.7	30.8	35.9	41.5	40.2	36.9	17.8	18.4	13.2
	Average	7.80	9.75	12.85	17.15	24.50	28.95	33.95	33.00	30.00	22.90	13.50	8.55
2016	Lowest	2.4	8.5	8.7	13.6	17.7	24.0	26.3	27.3	20.7	15.7	7.7	3.6
	Highest	9.9	20.3	17.8	24.9	30.2	36.5	40.7	41.8	34.0	28.9	19.8	11.2
	Average	6.15	14.40	13.25	19.25	23.95	30.25	33.50	34.55	27.35	22.30	13.75	7.40
2017	Lowest	11.3	20.3	17.3	23.1	30.5	36.9	42.2	41.8	37.9	27.8	19.9	17.3
	Highest	2.2	8.5	8.6	11.5	17.4	22.1	26.4	25.7	22.7	15.2	9.8	6.9
	Average	6.75	14.40	12.95	17.30	23.95	29.50	34.30	33.75	30.30	21.50	14.85	12.10
2018	Lowest	4.8	6.6	10.9	13.3	17.5	22.3	25.5	25.1	22.3	17.9	10.1	7.1
	Highest	13.2	15	21.8	25.2	29.3	36.3	40.9	40.2	36.9	29.1	18.3	13.1
	Average	9	10.8	16.35	19.25	23.4	29.3	33.2	32.65	29.6	23.5	14.2	10.1
2019	Lowest	4.0	5.3	6.9	10.2	18.3	24.2	24.1	26.0	21.0	17.4	8.8	7.3
	Highest	11.6	13.5	14.9	20.0	31.1	38.6	39.5	41.6	35.7	30.2	21.4	15.0
	Average	7.8	9.4	10.9	15.1	24.7	31.4	31.8	33.8	28.4	23.8	15.1	11.2
2020	Lowest	3.2	4.2	9.4	12.4	17.6	22.3	27.5	25.0	23.5	16.8	11.4	5.4
	Highest	11.1	12.3	18.9	23.2	30.9	36.9	41.9	39.9	38.7	31.7	20.5	15.5
	Average	7.2	8.3	14.2	17.8	24.3	29.6	34.7	32.5	31.1	24.3	16.0	10.5

Halabjah

Year	Temperature	Month											
		January	February	March	April	May	June	July	August	September	October	November	December
2012	Lowest												
	Highest												
	Average												
2013	Lowest	0.5	6.1	7.1	11.5	15.3	26.6	30.8	30.8	23.1	16.1	12.0	-2.1
	Highest	12.6	14.7	21.5	27.7	32.8	36.4	38.2	37.3	35.4	29.1	18.9	8.8
	Average	6.55	10.39	14.29	19.60	24.00	31.50	34.52	34.08	29.28	22.64	15.45	3.34
2014	Lowest	0.9	-0.2	5.9	12.4	22.1	25.2	31.2	29.0	25.2	13.2	7.6	5.0
	Highest	11.4	16.6	19.0	28.3	32.1	38.1	38.6	39.2	35.5	28.3	17.5	12.7
	Average	6.14	8.16	12.45	20.35	27.07	31.66	34.89	34.06	30.35	20.78	12.56	8.83
2015	Lowest	1.7	2.7	7.2	10.2	10.3	28.3	32.9	35.0	24.1	13.8	9.2	
	Highest	12.1	15.2	16.6	24.9	25.0	30.4	41.1	40.1	34.8	30.7	16.4	
	Average	6.89	8.92	11.90	17.59	17.65	29.35	36.99	37.53	29.48	22.25	12.81	
2016	Lowest		5.1	8.8	13.4	17.4	26.0	32.6	32.8	22.2	18.6	5.8	
	Highest		17.2	16.5	26.5	31.0	36.7	38.9	37.9	35.7	27.2	22.7	
	Average		11.12	12.63	19.97	24.17	31.33	35.72	35.35	28.99	22.87	14.27	
2017	Lowest	6.3	6.1	11.7	17.4	24.2	30.8	34.9	34.4	30.1	21.2	13.8	
	Highest	7.6	7.5	13.1	19.0	26.3	32.9	37.0	36.6	32.3	23.1	15.4	
	Average	6.98	6.81	12.38	18.18	25.25	31.82	35.97	35.50	31.21	22.14	14.58	
2018	Lowest	3.97	6.6	10.11	14.06	14.32	27	31.94	31.56	28.8	14.61	8.49	5.3
	Highest	13.09	14.76	24.04	23.54	30.68	37.1	40.48	36.62	35	30.04	19.93	15.9
	Average	8.53	10.68	17.08	18.8	22.5	32.05	36.21	34.09	31.90	22.33	14.21	10.60
2019	Lowest	2.4	4.3	6.1	9.4	16.02	41	42.8	25.9	21.1	16.5	8.63	5.58
	Highest	12.1	14.1	15.7	21.2	32.3	23.3	24.5	43.4	38.1	30.5	21.04	12.7
	Average	7.25	9.2	10.9	15.3	24.16	32.15	33.65	34.65	29.6	23.5	14.84	9.14
2020	Lowest	3.19	3.59	8.21	10.99	16.12	21.49	26.85	23.51	23.98		7.78	3.77
	Highest	12.13	13.3	19.84	24.1	33.38	39.5	43.87	41.24	41.62		17.72	14.28
	Average	7.66	8.445	14.03	17.55	24.75	30.5	35.36	32.38	32.8		12.75	9.025

*Weather data has not been recorded in Halabjah governorate due to not being a weather recording station there in 2012.

Weather condition in Erbil governorate

Year	Month	Weather condition (daytime)							
		Rain	Snow	Hail	Windstorm and thunder	Windstorm and dust	clear	Partly cloudy	Cloudy
2012	1	14	0	0	0	15	1	7	23
	2	11	0	0	1	8	1	8	19
	3	15	0	0	2	11	3	9	19
	4	6	0	0	5	29	1	21	8
	5	11	0	0	10	27	1	20	10
	6	0	0	0	0	27	10	17	3
	7	1	0	0	0	28	12	13	6
	8	0	0	0	0	31	17	14	0
	9	2	0	0	1	16	20	8	2
	10	11	0	3	0	16	2	19	10
	11	12	0	0	2	6	0	11	19
	12	10	0	0	5	8	2	14	15
2013	1	15	0	0	1	0	3	7	21
	2	12	0	0	1	0	0	11	17
	3	12	0	0	2	1	0	14	17
	4	11	0	0	6	0	1	16	13
	5	15	0	0	9	1	0	13	18
	6	0	0	0	1	0	11	18	1
	7	0	0	0	0	0	29	2	0
	8	0	0	0	0	0	18	12	1
	9	0	0	0	0	0	17	9	4
	10	1	0	0	0	0	10	17	4
	11	9	0	0	4	0	1	8	21
	12	11	0	0	0	0	7	10	14
2014	1	8	0	0	0	0	3	6	22
	2	3	0	0	1	0	6	14	8
	3	12	0	0	1	1	2	9	20
	4	13	0	0	4	0	0	12	18
	5	6	0	5	0	0	1	21	9
	6	1	0	0	0	0	7	18	5
	7	0	0	0	0	0	18	12	1
	8	2	0	0	0	1	19	12	0
	9	2	0	0	0	0	14	13	3
	10	12	0	8	0	0	2	15	14
	11	10	0	0	8	0	2	14	15
	12	13	0	0	0	0	2	8	21
2015	1	12	0	0	0	0	3	9	19
	2	1	0	0	2	0	3	8	17
	3	1	0	0	7	0	0	10	21
	4	1	0	0	2	0	0	14	16
	5	10	0	0	3	0	2	14	15
	6	1	0	0	1	0	14	10	6
	7	0	0	0	0	0	12	19	0
	8	0	0	0	0	0	15	14	2
	9	6	0	0	2	0	6	18	6
	10	17	0	0	4	0	0	8	23
	11	12	0	0	3	0	3	10	17
	12	8	0	0	1	0	3	13	15

2016	1	14	0	0	1	0	0	14	17
	2	13	0	0	0	0	0	11	18
	3	12	0	0	2	0	1	10	20
	4	9	0	0	4	0	0	11	19
	5	7	0	0	2	0	0	20	11
	6	3	0	0	3	0	5	19	6
	7	0	0	0	0	0	14	16	1
	8	0	0	0	0	0	14	16	1
	9	0	0	0	0	0	14	15	1
	10	8	0	0	0	0	3	17	11
	11	2	0	0	1	0	9	10	11
	12	14	0	0	2	0	0	3	28
2017	1	12	0	0	2	2	0	6	25
	2	6	0	0	3	0	4	14	10
	3	22	0	0	3	1	0	6	25
	4	11	0	0	3	0	0	8	22
	5	2	0	0	6	0	3	25	3
	6	1	0	0	0	0	12	18	0
	7	0	0	0	0	0	14	14	3
	8	1	0	0	1	0	18	13	0
	9	1	0	0	0	0	12	18	0
	10	6	0	0	1	0	6	19	6
	11	8	0	0	2	0	2	8	20
	12	8	0	0	0	0	4	4	23
2018	1	8	0	0	1	0	0	4	27
	2	14	0	0	4	0	3	4	21
	3	5	0	0	1	0	0	13	18
	4	12	0	0	7	0	0	4	26
	5	14	0	0	14	0	0	7	24
	6	2	0	0	1	0	11	16	3
	7	0	0	0	0	0	21	10	0
	8	1	0	0	0	0	27	4	0
	9	0	0	0	0	0	20	10	0
	10	9	0	0	4	0	3	11	17
	11	15	0	0	5	0	1	4	25
	12	19	0	0	7	0	0	0	31
2019	1	13	0	0	5	0	0	11	20
	2	13	0	0	0	0	1	5	22
	3	16	0	0	6	0	0	3	27
	4	14	0	0	11	0	0	3	26
	5	6	0	0	5	0	1	22	8
	6	2	0	0	1		2	28	0
	7	0	0	0	0	0	15	16	0
	8	2			1		12	19	
	9	0	0	0	0	0	16	14	0
	10	8			3		3	29	
	11	4	0	0	1	0	6	17	9
	12	14	0	0	0	0	2	20	9

2020	1	15	0	0	2	0	2	14	15
	2	12	3	0	1	0	0	9	20
	3	13			8		1	19	11
	4	10	0	0	8	0	0	27	5
	5	4	0	0	2	0	2	29	1
	6	1	0	0	1		2	28	0
	7	0			2		6	25	
	8	0	0	0	0	0	18	13	0
	9	0	0	0	0	0	11	19	0
	10	0	0	0	1	0	8	23	0
	11	11	0	0	4	0	0	14	16
	12	6	0	0	0	0	2	23	6

Weather condition in Sulaimany governorate									
Year	Month	Weather condition (daytime)							
		Rain	Snow	Hail	Windstorm and thunder	Windstorm and dust	Clear	Partly cloudy	Cloudy
2013	5	14	0	0	7	1	0	22	9
	6	0	0	0	0	3	21	9	0
	7	0	0	0	0	0	31	0	0
	8	0	0	0	0	0	29	2	0
	9	0	0	0	0	0	19	11	0
	10	1	0	0	0	5	20	11	0
	11	13	0	0	4	3	2	16	12
	12	14	3	0	2	2	8	7	16
2014	1	7	0	0	1	5	7	13	11
	2	4	2	0	0	10	7	16	5
	3	11	0	0	4	0	10	12	9
	4	9	0	1	8	1	0	19	11
	5	6	0	0	4	1	3	23	5
	6	4	0	0	2	9	12	18	0
	7	1	0	0	0	0	30	1	0
	8	0	0	0	0	0	30	1	0
	9	0	0	0	0	0	27	3	0
	10	8	0	0	4	0	8	18	5
	11	9	0	0	4	3	5	13	12
	12	12	0	0	2	0	6	5	20
2015	1	12	5	0	3	0	6	8	17
	2	8	1	2	1	0	2	15	11
	3	13	0	0	4	3	3	22	6

	4	7	0	0	3	0	9	10	12
	5	3	0	0	0	0	25	3	1
	6	0	0	0	0	16	16	15	0
	7	0	0	0	0	16	16	15	0
	8	2	0	0	2	7	22	9	0
	9	3	0	0	2	10	10	18	2
	10	9	0	0	8	0	2	14	13
	11	9	0	0	2	0	7	11	12
	12	13	2	0	0	0	7	10	14
2016	1	14	3	0	3	0	3	9	19
	2	8	0	0	0	0	5	13	11
	3	14	0	0	4	0	7	6	18
	4	11	0	1	1	0	3	11	16
	5	4	0	0	3	0	9	11	11
	6	0	0	0	1	0	10	14	6
	7	0	0	0	0	0	27	4	0
	8	0	0	0	0	0	19	10	2
	9	0	0	0	0	0	26	4	0
	10	4	0	0	0	0	12	15	4
	11	3	0	0	0	0	10	11	9
	12	11	3	0	4	0	5	9	17
2017	1	10	3	0	2	0	5	4	22
	2	8	3	0	2	0	11	6	11
	3	19	0	1	1	0	1	11	19
	4	13	0	0	3	0	2	7	21
	5	5	0	0	4	0	12	14	5
	6	1	0	0	0	0	25	5	0
	7	0	0	0	0	0	19	8	4
	8	0	0	0	0	0	19	10	2
	9	0	0	0	0	0	15	15	0
	10	1	0	0	0	0	11	15	5
	11	9	0	0	6	0	7	13	10
	12	5	0	0	0	0	9	5	16
2018	1	10	0	0	0	0	9	12	10
	2	14	0	0	1	0	4	6	18
	3	7	0	0	3	0	6	11	14
	4	13	0	0	6	0	2	10	18
	5	16	0	0	13	0	2	15	14
	6	0	0	0	0	0	19	11	0
	7	0	0	0	0	0	22	9	0
	8	0	0	0	0	0	27	3	1
	9	0	0	0	2	0	19	10	1
	10	7	0	0	0	0	2	16	9
	11	16	0	0	0	0	1	12	17
	12	19	0	2	10	0	0	16	15
2019	1	13	3	9		19	12	1	
	2	13		2	3		2	15	11
	3	19	1	1	7		1	8	22
	4	19		2	11			18	12

	5	8			7		4	21	6
	6	2			2		8	22	
	7						17	14	
	8	2			1		7	23	
	9						20	10	
	10	8			3		3	23	5
	11	4			2		12	15	3
	12	15			5		3	15	13
2020	1	18	2	1	2	0	3	13	15
	2	14	4	0	4	0	3	11	15
	3	18	0	2	6	0	2	14	15
	4	14	0	3	12	0	1	21	8
	5	3	0	0	4	0	4	23	3
	6	0	0	0	1	0	13	17	0
	7	0	0	0	0	0	6	25	0
	8	0	0	0	0	0	19	12	0
	9	1	0	0	2	0	11	19	0
	10	0	0	0	1	0	12	18	0
	11	16	0	0	8	0	2	13	15
	12	6	0	0	1	0	6	21	4

Weather condition in Duhok governorate

Year	Month	Weather condition (daytime)							
		Rain	Snow	Hail	windstorm and thunder	windstorm and dust	clear	Partly cloudy	Cloudy
2012	1	21	1	0	0	0	1	30	0
	2	13	3	0	0	0	2	27	0
	3	15	3	0	0	0	4	27	0
	4	6	0	0	0	0	1	29	0
	5	5	0	0	0	0	0	31	0
	6	1	0	0	0	0	8	22	0
	7	2	0	0	0	0	10	21	0
	8	0	0	0	0	0	21	10	0
	9	0	0	0	0	0	20	10	0
	10	11	0	0	0	0	4	27	0
	11	0	0	0	0	0	0	0	0
	12	0	0	0	0	0	0	0	0
2014	1	6	0	0	1	0	2	29	0
	2	5	0	0	0	0	8	20	0
	3	11	0	0	2	0	1	26	1
	4	10	0	0	4	0	0	30	0
	5	7	0	0	1	0	0	31	0
	6	2	0	0	2	0	7	23	0
	7	0	0	0	0	0	18	13	0
	8	1	0	0	1	0	15	16	0

	9	2	0	0	2	0	13	17	0
	10	14	0	0	3	0	1	30	0
	11	11	0	0	3	0	6	24	0
	12	15	0	0	0	0	0	30	1
2015	1	10	1	0	0	0	3	28	0
	2	9	1	0	3	0	0	28	0
	3	16	0	0	1	0	2	29	0
	4	10	0	0	5	0	2	28	0
	5	5	0	0	5	0	2	29	0
	6	1	0	0	0	0	12	18	0
	7	0	0	0	0	0	17	14	0
	8	1	0	0	1	0	17	14	0
	9	3	0	0	2	0	8	22	0
	10	15	0	0	1	0	0	31	0
	11	10	0	0	2	0	6	23	1
	12	9	0	0	1	0	7	23	1

2016	1	14	1	2	1	0	0	28	3
	2	9	0	0	1	0	4	25	0
	3	14	0	1	2	0	2	27	2
	4	5	0	0	2	0	1	29	0
	5	4	0	0	3	0	0	31	0
	6	2	0	0	4	0	3	27	0
	7	0	0	0	0	0	21	10	0
	8	0	0	0	0	0	13	18	0
	9	1	0	0	0	0	16	14	0
	10	4	0	0	1	0	9	22	0
	11	3	0	0	0	0	11	19	0
	12	12	0	0	1	0	1	29	1
2017	1	10	2	0	1	0	0	31	0
	2	6	2	0	2	0	4	24	0
	3	18	0	0	2	0	0	30	1
	4	11	0	0	2	0	2	28	0
	5	8	0	1	6	0	2	29	0
	6	0	0	0	0	0	11	19	0
	7	0	0	0	0	0	15	16	0
	8	1	0	0	1	0	21	10	0
	9	0	0	0	0	0	15	15	0
	10	2	0	0	0	0	10	21	0
	11	9	0	0	4	0	4	26	0
	12	8	0	0	0	0	3	27	1
2018	1	12	0	0	2	0	0	30	1
	2	14	0	0	5	0	2	24	2
	3	8	0	0	3	0	0	30	1
	4	12	0	0	5	0	1	29	0
	5	13	0	0	8	0	1	30	0

	6	3	0	0	3	0	11	19	0
	7	1	0	0	0	0	22	9	0
	8	0	0	0	0	0	27	4	0
	9	0	0	0	0	0	16	14	0
	10	10	0	0	2	0	2	29	0
	11	15	0	0	4	0	1	29	0
	12	21	0	4	0	0	0	31	0
2019	1	13	0	0	1	0	0	31	0
	2	14	0	0	1	0	2	24	2
	3	21	0	0	4	0	0	30	1
	4	17	0	0	9	0	0	30	0
	5	4	0	0	3	0	3	28	0
	6	2	0	0	2	0	5	25	0
	7	0	0	0	0	0	18	13	0
	8	3	0	0	3	0	16	15	0
	9	0	0	0	0	0	18	12	0
	10	7	0	0	2	0	6	25	0
	11	7	0	0	1	0	12	18	0
	12	17	0	0	0	0	1	26	4
2020	1	17	0	0	1	0	2	27	2
	2	13	5	0	3	0	0	28	1
	3	15	0	0	7	0	2	28	1
	4	11	0	0	7	0	0	30	0
	5	4	0	0	5	0	6	25	0
	6	3	0	0	1	0	7	23	0
	7	0	0	0	1	0	4	27	0
	8	1	0	0	2	0	15	16	0
	9	0	0	0	0	0	14	16	0
	10	2	0	0	2	0	7	24	0
	11	13	0	0	3	0	1	29	0
	12	8	0	0	0	0	3	28	0

Source: Kurdistan region's general directorate of weather forecast and earthquake.

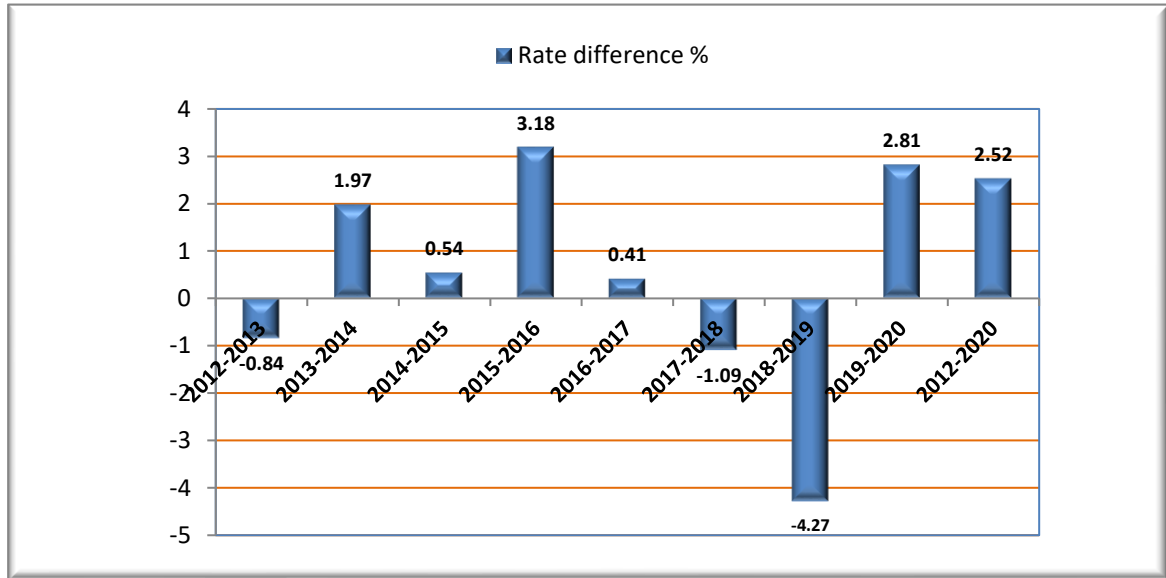
Average rate difference of temperature in Kurdistan Region

2012-2020

Average Degree (°C)	Year
20.64	2012
20.46	2013
-0.84	Rate difference %
20.46	2013
20.87	2014
1.97	Rate difference %
20.87	2014
20.98	2015
0.54	Rate difference %
20.98	2015
21.64	2016
3.18	Rate difference %
21.64	2016
21.73	2017
0.41	Rate difference %
21.73	2017
21.50	2018
-1.09	Rate difference %
21.50	2018
20.58	2019
-4.27	Rate difference %
20.58	2019
21.16	2020
2.81	Rate difference %
20.64	2012
21.16	2020
2.52	Rate difference %

Average rate of difference of temperature in Kurdistan Region

2012-2020



Difference between rainfall levels in Kurdistan region for the years 2012 - 2020/ mm

Rainfall level(mm)	Year
1578.8	2012
2338.5	2013
48.1	Rate difference %
2338.5	2013
2133.2	2014
-8.8	Rate difference %
2133.2	2014
2331.3	2015
9.3	Rate difference %
2331.3	2015
1921.4	2016
-17.6	Rate difference %
1921.4	2016
1507.2	2017
-21.6	Rate difference %
1507.2	2017
3575.1	2018
137.2	Rate difference %
3575.1	2018
3278.4	2019
-8.3	Rate difference %
3278.4	2019
2356.1	2020
-28.1	Rate difference %
1578.8	2012
2356.1	2020
49.2	Rate difference %

Rainfall level in Kurdistan region for the years 2012-2020/mm

